

Datasheet for ABIN2855018

**anti-CASR antibody****3** Images[Go to Product page](#)

## Overview

Quantity:	100 µL
Target:	CASR
Reactivity:	Human
Host:	Rabbit
Clonality:	Polyclonal
Conjugate:	This CASR antibody is un-conjugated
Application:	Western Blotting (WB), Immunofluorescence (IF), Immunohistochemistry (Paraffin-embedded Sections) (IHC (p)), Immunocytochemistry (ICC)

## Product Details

Immunogen:	Recombinant protein encompassing a sequence within the center region of human Calcium Sensing Receptor. The exact sequence is proprietary.
Isotype:	IgG
Cross-Reactivity:	Human, Mouse, Rat
Characteristics:	Rabbit polyclonal antibody to Calcium Sensing Receptor (calcium-sensing receptor (hypocalciuric hypercalcemia 1, severe neonatal hyperparathyroidism)) Calcium Sensing Receptor antibody
Purification:	Purified by antigen-affinity chromatography.

## Target Details

Target:	CASR
---------	------

## Target Details

Alternative Name:	calcium sensing receptor ( <a href="#">CASR Products</a> )
Background:	<p>The protein encoded by this gene is a G protein-coupled receptor that is expressed in the parathyroid hormone (PTH)-producing chief cells of the parathyroid gland, and the cells lining the kidney tubule. It senses small changes in circulating calcium concentration and couples this information to intracellular signaling pathways that modify PTH secretion or renal cation handling, thus this protein plays an essential role in maintaining mineral ion homeostasis. Mutations in this gene cause familial hypocalciuric hypercalcemia, familial, isolated hypoparathyroidism, and neonatal severe primary hyperparathyroidism.</p> <p>Cellular Localization: Cell membrane</p>
Molecular Weight:	121 kDa
Gene ID:	846
UniProt:	<a href="#">P41180</a>
Pathways:	<a href="#">Positive Regulation of Peptide Hormone Secretion</a> , <a href="#">Carbohydrate Homeostasis</a>

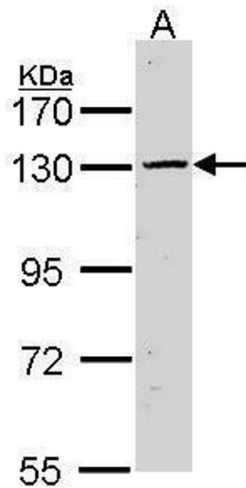
## Application Details

Application Notes:	WB: 1:500-1:3000. ICC/IF: 1:100-1:1000. IHC-P: 1:100-1:1000. Optimal dilutions/concentrations should be determined by the researcher. Not tested in other applications.
Comment:	Positive Control: mouse placenta, mouse pancreas, mouse kidney, unboiled TT
Restrictions:	For Research Use only

## Handling

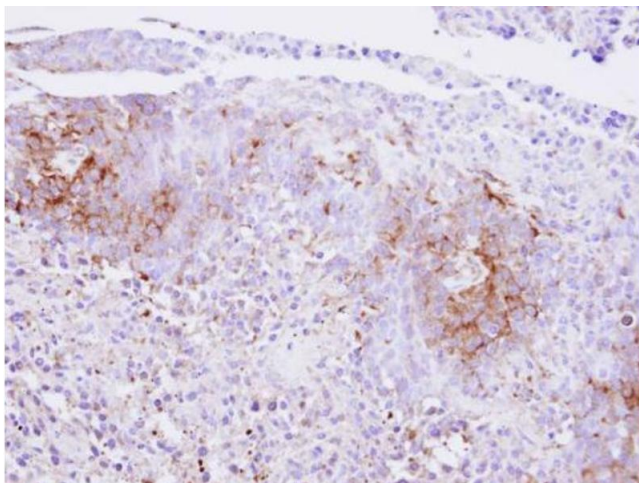
Format:	Liquid
Concentration:	0.55 mg/mL
Buffer:	1XPBS pH 7, 20 % Glycerol, 0.025 % ProClin 300
Preservative:	ProClin
Precaution of Use:	This product contains ProClin: a POISONOUS AND HAZARDOUS SUBSTANCE which should be handled by trained staff only.
Storage:	4 °C,-20 °C
Storage Comment:	Store as concentrated solution. Centrifuge briefly prior to opening vial. For short-term storage

(1-2 weeks), store at 4°C. For long-term storage, aliquot and store at -20°C or below. Avoid multiple freeze-thaw cycles.



### Western Blotting

**Image 1.** WB Image Sample (30 ug of whole cell lysate) A: HeLa 7.5% SDS PAGE antibody diluted at 1:1000



### Immunohistochemistry

**Image 2.** IHC-P Image Immunohistochemical analysis of paraffin-embedded SAS xenograft, using Calcium Sensing Receptor, antibody at 1:500 dilution.



### Immunofluorescence

**Image 3.** ICC/IF Image Immunofluorescence analysis of paraformaldehyde-fixed HeLa, using Calcium Sensing Receptor, antibody at 1:200 dilution.