

Datasheet for ABIN2855019
anti-CBL antibody (C-Term)[Go to Product page](#)

2 Images

Overview

Quantity:	100 µL
Target:	CBL
Binding Specificity:	C-Term
Reactivity:	Human
Host:	Rabbit
Clonality:	Polyclonal
Conjugate:	This CBL antibody is un-conjugated
Application:	Western Blotting (WB), Immunofluorescence (IF), Immunocytochemistry (ICC)

Product Details

Immunogen:	Recombinant protein encompassing a sequence within the C-terminus region of human CBL. The exact sequence is proprietary.
Isotype:	IgG
Characteristics:	Rabbit Polyclonal antibody to CBL (Cas-Br-M (murine) ecotropic retroviral transforming sequence) CBL antibody [C2C3], C-term
Purification:	Purified by antigen-affinity chromatography.

Target Details

Target:	CBL
Alternative Name:	CBL (CBL Products)

Target Details

Background: The cbl oncogene was first identified as part of a transforming retrovirus which induces mouse pre-B and pro-B cell lymphomas. As an adaptor protein for receptor protein-tyrosine kinases, it positively regulates receptor protein-tyrosine kinase ubiquitination in a manner dependent upon its variant SH2 and RING finger domains. Ubiquitination of receptor protein-tyrosine kinases terminates signaling by marking active receptors for degradation.

Cellular Localization: Cytoplasm

Molecular Weight: 100 kDa

Gene ID: 867

Pathways: [TCR Signaling](#), [Interferon-gamma Pathway](#), [EGFR Signaling Pathway](#), [EGFR Downregulation](#), [VEGFR1 Specific Signals](#)

Application Details

Application Notes: Suggested dilution Reference ICC/IF 1:50-1:200* Western blot 1:500-1:3000* Not tested in other applications. *Optimal dilutions/concentrations should be determined by the researcher.Suggested dilutionReferenceICC/IF1:50-1:200* Western blot1:500-1:3000*

Comment: Positive Control: THP-1 , *293T

Restrictions: For Research Use only

Handling

Format: Liquid

Concentration: 1 mg/mL

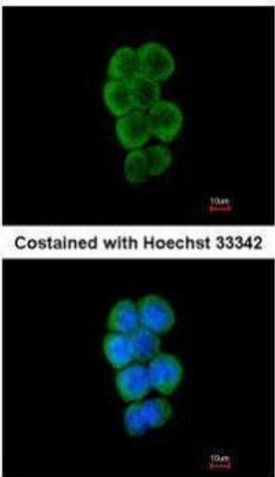
Buffer: 1XPBS, 40 % Glycerol (pH 7). 0.01 % Thimerosal was added as a preservative.

Preservative: Thimerosal (Merthiolate)

Precaution of Use: This product contains Thimerosal (Merthiolate): a POISONOUS AND HAZARDOUS SUBSTANCE which should be handled by trained staff only.

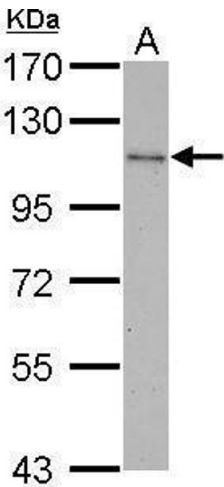
Storage: -20 °C

Storage Comment: Keep as concentrated solution. Aliquot and store at -20°C or below. Avoid multiple freeze-thaw cycles.



Immunofluorescence

Image 1. ICC/IF Image Immunofluorescence analysis of methanol-fixed A431, using CBL, antibody at 1:50 dilution.



Western Blotting

Image 2. WB Image CBL antibody [C2C3], C-term detects CBL protein by Western blot analysis. A. 30 µg THP-1 whole cell lysate/extract 7.5 % SDS-PAGE CBL antibody [C2C3], C-term , dilution: 1:1000