



[Go to Product page](#)

Datasheet for ABIN2855023

anti-Actin antibody

3 Images

Overview

Quantity:	100 µL
Target:	Actin (ACTA1)
Reactivity:	Human
Host:	Rabbit
Clonality:	Polyclonal
Conjugate:	This Actin antibody is un-conjugated
Application:	Western Blotting (WB), Immunohistochemistry (Paraffin-embedded Sections) (IHC (p)), Flow Cytometry (FACS)

Product Details

Immunogen:	Recombinant protein encompassing a sequence within the center region of human alpha Skeletal Muscle Actin. The exact sequence is proprietary.
Isotype:	IgG
Cross-Reactivity:	Human, Mouse, Rat
Characteristics:	Rabbit Polyclonal antibody to alpha Skeletal Muscle Actin (actin, alpha 1, skeletal muscle) alpha Skeletal Muscle Actin antibody
Purification:	Purified by antigen-affinity chromatography.

Target Details

Target:	Actin (ACTA1)
Alternative Name:	actin alpha 1, skeletal muscle (ACTA1 Products)

Target Details

Background: The product encoded by this gene belongs to the actin family of proteins, which are highly conserved proteins that play a role in cell motility, structure and integrity. Alpha, beta and gamma actin isoforms have been identified, with alpha actins being a major constituent of the contractile apparatus, while beta and gamma actins are involved in the regulation of cell motility. This actin is an alpha actin that is found in skeletal muscle. Mutations in this gene cause nemaline myopathy type 3, congenital myopathy with excess of thin myofilaments, congenital myopathy with cores, and congenital myopathy with fiber-type disproportion, diseases that lead to muscle fiber defects.

Cellular Localization: Cytoplasm , cytoskeleton

Molecular Weight: 42 kDa

Gene ID: 58

UniProt: [P68133](#)

Pathways: [Caspase Cascade in Apoptosis](#), [Myometrial Relaxation and Contraction](#), [Skeletal Muscle Fiber Development](#)

Application Details

Application Notes: WB: 1:1000-1:10000. IHC-P: 1:100-1:1000. Optimal dilutions/concentrations should be determined by the researcher. Not tested in other applications.

Comment: Positive Control: Raji , NIH-3T3 , JC , BCL-1 , C2C12

Restrictions: For Research Use only

Handling

Format: Liquid

Concentration: 0.81 mg/mL

Buffer: 1XPBS (pH 7), 20 % Glycerol, 0.025 % ProClin 300

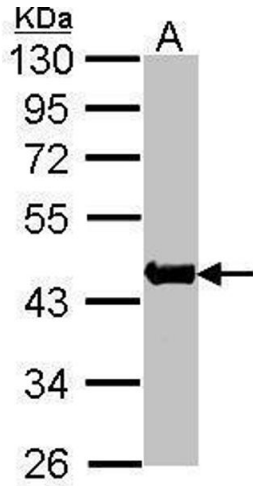
Preservative: ProClin

Precaution of Use: This product contains ProClin: a POISONOUS AND HAZARDOUS SUBSTANCE which should be handled by trained staff only.

Storage: 4 °C,-20 °C

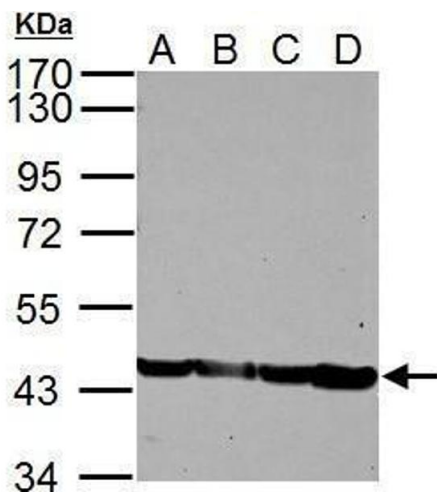
Storage Comment: Store as concentrated solution. Centrifuge briefly prior to opening vial. For short-term storage

(1-2 weeks), store at 4°C. For long-term storage, aliquot and store at -20°C or below. Avoid multiple freeze-thaw cycles.



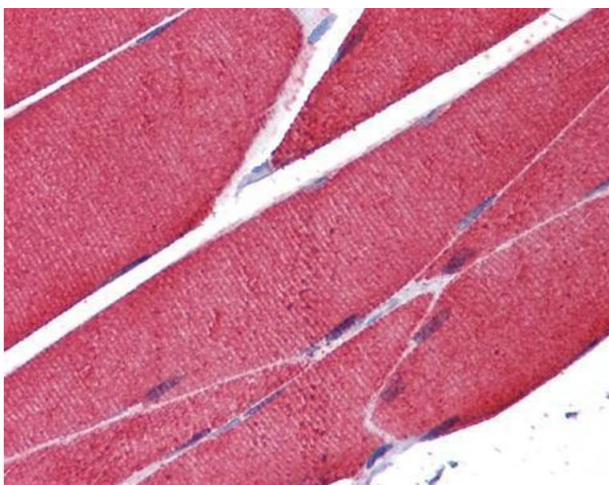
Western Blotting

Image 1. WB Image Sample(30 µg of whole cell lysate)
A:Raji, 10% SDS PAGE antibody diluted at 1:1000



Western Blotting

Image 2. WB Image Sample (30 ug of whole cell lysate) A:
NIH-3T3 B: JC C: BCL-1 D: C2C12 10% SDS PAGE antibody
diluted at 1:5000



Immunohistochemistry

Image 3. IHC-P Image Immunohistochemical analysis of
paraffin-embedded human skeletal muscle, using alpha
Actin (skeletal muscle), antibody(10 µg/ml).