

Datasheet for ABIN2855024

anti-ALDOB antibody

7 Images

2 Publications

[Go to Product page](#)

Overview

Quantity:	100 µL
Target:	ALDOB
Reactivity:	Human
Host:	Rabbit
Clonality:	Polyclonal
Conjugate:	This ALDOB antibody is un-conjugated
Application:	Western Blotting (WB), Immunohistochemistry (Paraffin-embedded Sections) (IHC (p)), Immunofluorescence (IF), Immunocytochemistry (ICC)

Product Details

Immunogen:	Recombinant protein encompassing a sequence within the center region of human Aldolase B. The exact sequence is proprietary.
Isotype:	IgG
Cross-Reactivity:	Human, Mouse, Rat, Turtle
Characteristics:	Rabbit Polyclonal antibody to Aldolase B (aldolase B, fructose-bisphosphate) Aldolase B antibody
Purification:	Purified by antigen-affinity chromatography.

Target Details

Target:	ALDOB
Alternative Name:	aldolase, fructose-bisphosphate B (ALDOB Products)

Target Details

Background: Fructose-1,6-bisphosphate aldolase (EC 4.1.2.13) is a tetrameric glycolytic enzyme that catalyzes the reversible conversion of fructose-1,6-bisphosphate to glyceraldehyde 3-phosphate and dihydroxyacetone phosphate. Vertebrates have 3 aldolase isozymes which are distinguished by their electrophoretic and catalytic properties. Differences indicate that aldolases A, B, and C are distinct proteins, the products of a family of related 'housekeeping' genes exhibiting developmentally regulated expression of the different isozymes. The developing embryo produces aldolase A, which is produced in even greater amounts in adult muscle where it can be as much as 5 % of total cellular protein. In adult liver, kidney and intestine, aldolase A expression is repressed and aldolase B is produced. In brain and other nervous tissue, aldolase A and C are expressed about equally. There is a high degree of homology between aldolase A and C. Defects in ALDOB cause hereditary fructose intolerance.

Molecular Weight: 39 kDa

Gene ID: 229

UniProt: [P05062](#)

Application Details

Application Notes: WB: 1:500-1:3000. ICC/IF: 1:100-1:1000. IHC-P: 1:100-1:1000. Optimal dilutions/concentrations should be determined by the researcher. Not tested in other applications.

Comment: Positive Control: Neuro2A , GL261 , C8D30 , PC-12 , mouse brain , rat brain , 293T , A431 , HeLa , HepG2
Validation: Orthogonal

Restrictions: For Research Use only

Handling

Format: Liquid

Concentration: 0.09 mg/mL

Buffer: 1XPBS (pH 7), 1 % BSA, 20 % Glycerol, 0.025 % ProClin 300

Preservative: ProClin

Precaution of Use: This product contains ProClin: a POISONOUS AND HAZARDOUS SUBSTANCE which should be handled by trained staff only.

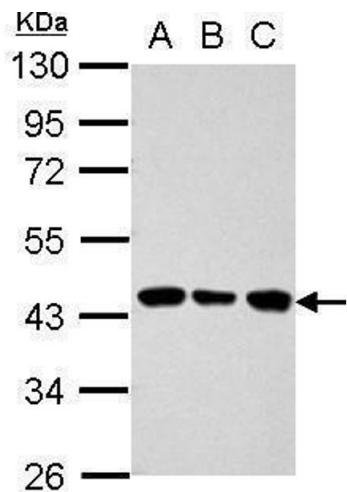
Handling

Storage:	4 °C,-20 °C
Storage Comment:	Store as concentrated solution. Centrifuge briefly prior to opening vial. For short-term storage (1-2 weeks), store at 4°C. For long-term storage, aliquot and store at -20°C or below. Avoid multiple freeze-thaw cycles.

Publications

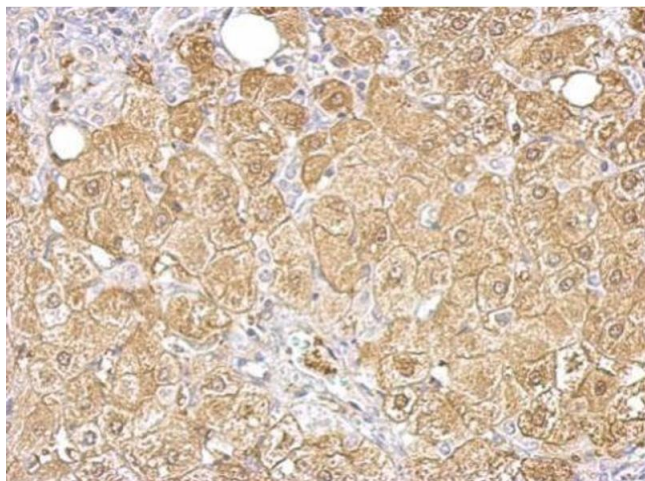
Product cited in:	<p>Chen, Lin, Chen, Cheng, Cheng, Imai et al.: "Effect of prednisolone on glyoxalase 1 in an inbred mouse model of aristolochic acid nephropathy using a proteomics method with fluorogenic derivatization-liquid chromatography-tandem mass ..." in: PLoS ONE, Vol. 15, Issue 1, pp. e0227838, (2020) (PubMed).</p> <p>Dawson, Biggar, Storey: "Characterization of fructose-1,6-bisphosphate aldolase during anoxia in the tolerant turtle, Trachemys scripta elegans: an assessment of enzyme activity, expression and structure." in: PLoS ONE, Vol. 8, Issue 7, pp. e68830, (2014) (PubMed).</p>
-------------------	---

Images



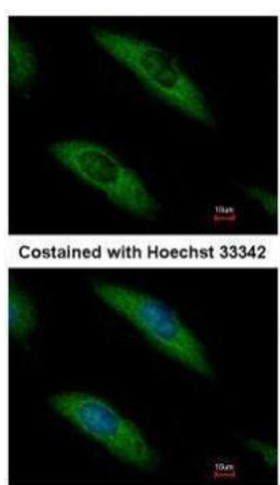
Western Blotting

Image 1. WB Image Sample (30 ug of whole cell lysate) A: 293T B: A431 C: HeLa 10% SDS PAGE antibody diluted at 1:1000



Immunohistochemistry

Image 2. IHC-P Image Aldolase B antibody detects ALDOB protein at cytosol on human hepatoma by immunohistochemical analysis. Sample: Paraffin-embedded hepatoma tissue. Aldolase B antibody , dilution: 1:500.



Immunofluorescence

Image 3. ICC/IF Image Immunofluorescence analysis of methanol-fixed HeLa, using Aldolase B, antibody at 1:500 dilution.

Please check the [product details page](#) for more images. Overall 7 images are available for ABIN2855024.