

Datasheet for ABIN2855031

**anti-AOC3 antibody****2** Images[Go to Product page](#)

## Overview

Quantity:	100 µL
Target:	AOC3
Reactivity:	Human
Host:	Rabbit
Clonality:	Polyclonal
Conjugate:	This AOC3 antibody is un-conjugated
Application:	Western Blotting (WB), Immunohistochemistry (Paraffin-embedded Sections) (IHC (p))

## Product Details

Immunogen:	Recombinant protein encompassing a sequence within the center region of human VAP1. The exact sequence is proprietary.
Isotype:	IgG
Cross-Reactivity:	Human
Characteristics:	Rabbit Polyclonal antibody to VAP1 (amine oxidase, copper containing 3 (vascular adhesion protein 1)) VAP1 antibody
Purification:	Purified by antigen-affinity chromatography.

## Target Details

Target:	AOC3
Alternative Name:	amine oxidase copper containing 3 ( <a href="#">AOC3 Products</a> )

## Target Details

**Background:** Copper amine oxidases catalyze the oxidative conversion of amines to aldehydes in the presence of copper and quinone cofactor. The product is a major protein on the adipocyte plasma membrane. It has adhesive properties and also has functional monoamine oxidase activity. A pseudogene for this gene has been described and is located approximately 9-kb downstream.

Cellular Localization: Membrane

**Molecular Weight:** 85 kDa

**Gene ID:** 8639

**UniProt:** [Q16853](#)

**Pathways:** [Feeding Behaviour](#)

## Application Details

**Application Notes:** WB: 1:500-1:3000. IHC-P: 1:100-1:1000. Optimal dilutions/concentrations should be determined by the researcher. Not tested in other applications.

**Comment:** Positive Control: A431

**Restrictions:** For Research Use only

## Handling

**Format:** Liquid

**Concentration:** 0.33 mg/mL

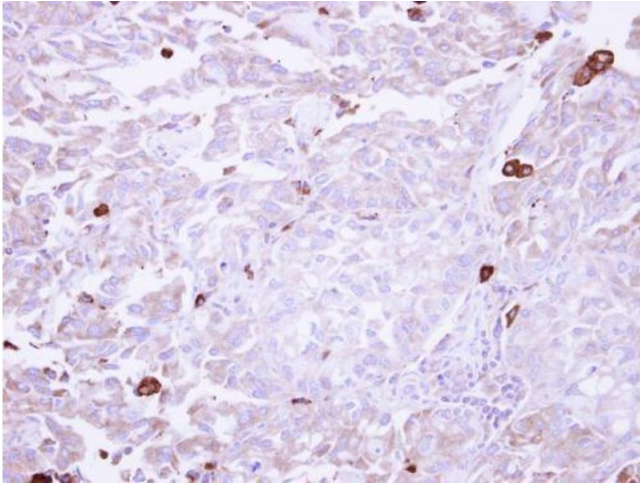
**Buffer:** 0.1M Tris-Glycine ( pH 7), 10 % Glycerol, 0.01 % Thimerosal

**Preservative:** Thimerosal (Merthiolate)

**Precaution of Use:** This product contains Thimerosal (Merthiolate): a POISONOUS AND HAZARDOUS SUBSTANCE which should be handled by trained staff only.

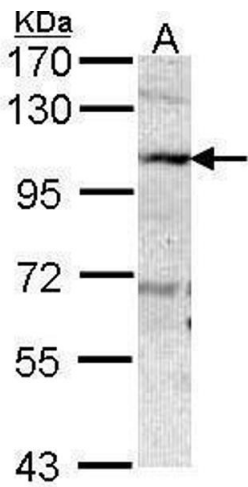
**Storage:** 4 °C,-20 °C

**Storage Comment:** Store as concentrated solution. Centrifuge briefly prior to opening vial. For short-term storage (1-2 weeks), store at 4°C. For long-term storage, aliquot and store at -20°C or below. Avoid multiple freeze-thaw cycles.



### Immunohistochemistry

**Image 1.** IHC-P Image Immunohistochemical analysis of paraffin-embedded human lung adenocarcinoma Macrophage, using VAP1, antibody at 1:250 dilution.



### Western Blotting

**Image 2.** WB Image Sample (30 ug of whole cell lysate) A: A431 , 7.5% SDS PAGE VAP1 antibody antibody diluted at 1:1000