

Datasheet for ABIN2855032
anti-CAD antibody (C-Term)

3 Images

[Go to Product page](#)

Overview

Quantity:	100 µL
Target:	CAD
Binding Specificity:	C-Term
Reactivity:	Human
Host:	Rabbit
Clonality:	Polyclonal
Conjugate:	This CAD antibody is un-conjugated
Application:	Western Blotting (WB), Immunohistochemistry (Paraffin-embedded Sections) (IHC (p))

Product Details

Immunogen:	Recombinant protein encompassing a sequence within the C-terminus region of human CAD. The exact sequence is proprietary.
Isotype:	IgG
Cross-Reactivity:	Human, Mouse
Characteristics:	Rabbit Polyclonal antibody to CAD (carbamoyl-phosphate synthetase 2, aspartate transcarbamylase, and dihydroorotase) CAD antibody [C2C3], C-term
Purification:	Purified by antigen-affinity chromatography.

Target Details

Target:	CAD
---------	-----

Target Details

Alternative Name:	carbamoyl-phosphate synthetase 2, aspartate transcarbamylase, and dihydroorotase (CAD Products)
Background:	<p>The de novo synthesis of pyrimidine nucleotides is required for mammalian cells to proliferate. This gene encodes a trifunctional protein which is associated with the enzymatic activities of the first 3 enzymes in the 6-step pathway of pyrimidine biosynthesis: carbamoylphosphate synthetase (CPS II), aspartate transcarbamoylase, and dihydroorotase. This protein is regulated by the mitogen-activated protein kinase (MAPK) cascade, which indicates a direct link between activation of the MAPK cascade and de novo biosynthesis of pyrimidine nucleotides.</p> <p>Cellular Localization: Cytoplasm</p>
Molecular Weight:	243 kDa
Gene ID:	790
UniProt:	P27708
Pathways:	Production of Molecular Mediator of Immune Response , Ribonucleoside Biosynthetic Process

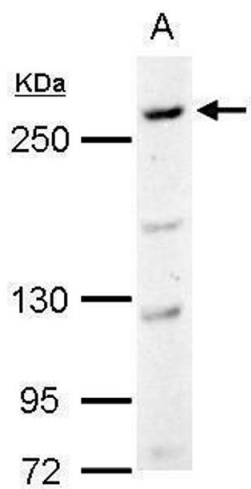
Application Details

Application Notes:	WB: 1:500-1:3000. IHC-P: 1:100-1:1000. Optimal dilutions/concentrations should be determined by the researcher. Not tested in other applications.
Comment:	Positive Control: 293T , C2C12
Restrictions:	For Research Use only

Handling

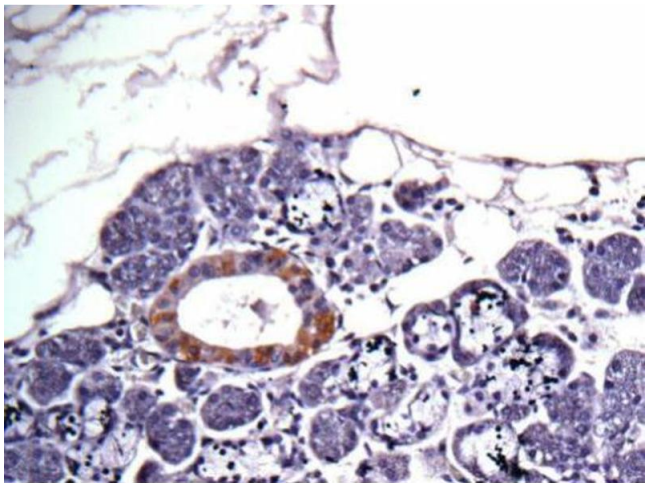
Format:	Liquid
Concentration:	0.41 mg/mL
Buffer:	1XPBS (pH 7), 10 % Glycerol, 0.01 % Thimerosal
Preservative:	Thimerosal (Merthiolate)
Precaution of Use:	This product contains Thimerosal (Merthiolate): a POISONOUS AND HAZARDOUS SUBSTANCE which should be handled by trained staff only.
Storage:	4 °C,-20 °C
Storage Comment:	Store as concentrated solution. Centrifuge briefly prior to opening vial. For short-term storage

(1-2 weeks), store at 4°C. For long-term storage, aliquot and store at -20°C or below. Avoid multiple freeze-thaw cycles.



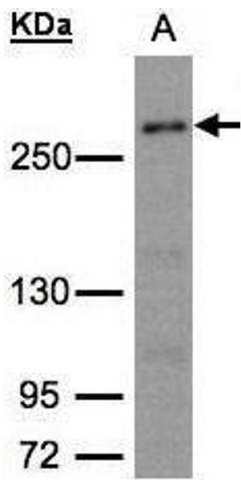
Western Blotting

Image 1. WB Image CAD antibody [C2C3], C-term detects CAD protein by Western blot analysis. A. 30 µg C2C12 whole cell lysate/extract 5 % SDS-PAGE CAD antibody [C2C3], C-term , dilution: 1:1000



Immunohistochemistry

Image 2. IHC-P Image Immunohistochemical analysis of human salivary gland cancer, using CAD, antibody at 1:100 dilution.



Western Blotting

Image 3. WB Image Sample (30µg whole cell lysate) A:293T whole cell lysate 5% SDS PAGE antibody diluted at 1:1500