

Datasheet for ABIN2855034

anti-Lactate Dehydrogenase A antibody

8 Images

3 Publications



[Go to Product page](#)

Overview

Quantity:	100 µL
Target:	Lactate Dehydrogenase A (LDHA)
Reactivity:	Human
Host:	Rabbit
Clonality:	Polyclonal
Conjugate:	This Lactate Dehydrogenase A antibody is un-conjugated
Application:	Western Blotting (WB), Immunofluorescence (IF), Immunocytochemistry (ICC), Immunohistochemistry (Paraffin-embedded Sections) (IHC (p))

Product Details

Immunogen:	Recombinant protein encompassing a sequence within the center region of human LDHA. The exact sequence is proprietary.
Isotype:	IgG
Cross-Reactivity:	Human, Mouse, Rat
Characteristics:	Rabbit Polyclonal antibody to Lactate Dehydrogenase (lactate dehydrogenase A) LDHA antibody
Purification:	Purified by antigen-affinity chromatography.

Target Details

Target:	Lactate Dehydrogenase A (LDHA)
Alternative Name:	lactate dehydrogenase A (LDHA Products)

Target Details

Background: The protein encoded by this gene catalyzes the conversion of L-lactate and NAD to pyruvate and NADH in the final step of anaerobic glycolysis. The protein is found predominantly in muscle tissue and belongs to the lactate dehydrogenase family. Mutations in this gene have been linked to exertional myoglobinuria. Multiple transcript variants encoding different isoforms have been found for this gene. The human genome contains several non-transcribed pseudogenes of this gene.

Cellular Localization: Cytoplasm

Molecular Weight: 37 kDa

Gene ID: 3939

UniProt: [P00338](#)

Pathways: [Warburg Effect](#)

Application Details

Application Notes: WB: 1:500-1:3000. ICC/IF: 1:100-1:1000. IHC-P: 1:100-1:1000. Optimal dilutions/concentrations should be determined by the researcher. Not tested in other applications.

Comment: Positive Control: PC-12 , Rat2 , Neuro2A , C8D30 , NIH-3T3 , Raw264.7 , C2C12 , 293T , A431 , HeLa , HepG2
Validation: Orthogonal

Restrictions: For Research Use only

Handling

Format: Liquid

Concentration: 1.33 mg/mL

Buffer: 1XPBS pH 7, 20 % Glycerol, 0.025 % ProClin 300

Preservative: ProClin

Precaution of Use: This product contains ProClin: a POISONOUS AND HAZARDOUS SUBSTANCE which should be handled by trained staff only.

Storage: 4 °C,-20 °C

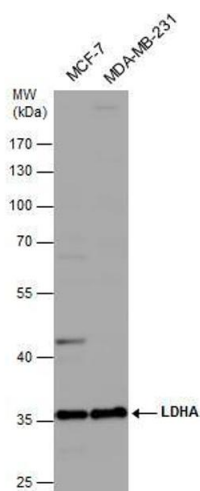
Storage Comment: Store as concentrated solution. Centrifuge briefly prior to opening vial. For short-term storage (1-2 weeks), store at 4°C. For long-term storage, aliquot and store at -20°C or below. Avoid

multiple freeze-thaw cycles.

Publications

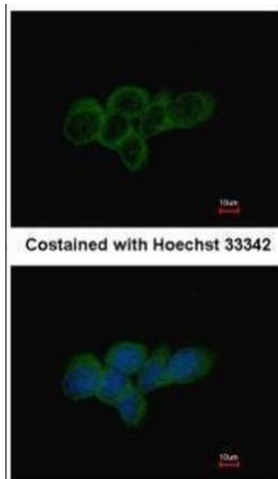
Product cited in: Sarin, Engel, Rothweiler, Cinatl, Michaelis, Frötschl, Fröhlich, Kalayda: "Key Players of Cisplatin Resistance: Towards a Systems Pharmacology Approach." in: **International journal of molecular sciences**, Vol. 19, Issue 3, (2018) ([PubMed](#)).

Images



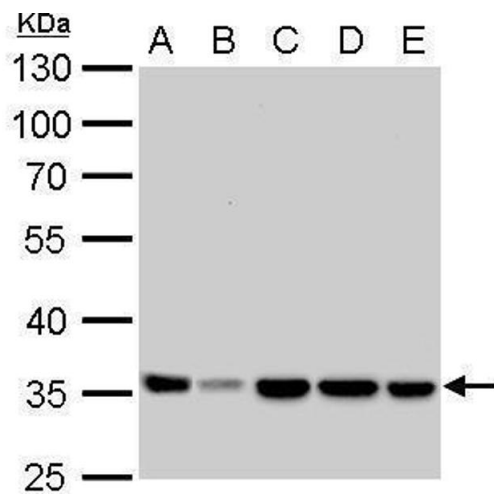
Western Blotting

Image 1. WB Image Various whole cell extracts (30 µg) were separated by 10% SDS-PAGE, and the membrane was blotted with LDHA antibody, diluted at 1:1000.



Immunofluorescence

Image 2. ICC/IF Image Immunofluorescence analysis of methanol-fixed A431, using LDHA, antibody at 1:500 dilution.



Western Blotting

Image 3. WB Image LDHA antibody detects LDHA protein by Western blot analysis. A. 30 μ g Neuro2A whole cell lysate/extract B. 30 μ g C8D30 whole cell lysate/extract C. 30 μ g NIH-3T3 whole cell lysate/extract D. 30 μ g Raw264.7 whole cell lysate/extract E. 30 μ g C2C12 whole cell lysate/extract 10 % SDS-PAGE LDHA antibody , dilution: 1:1000

Please check the [product details page](#) for more images. Overall 8 images are available for ABIN2855034.