

Datasheet for ABIN2855037
anti-HSP90AB1 antibody (Internal Region)

5 Images

1 Publication

[Go to Product page](#)

Overview

Quantity:	100 µL
Target:	HSP90AB1
Binding Specificity:	Internal Region
Reactivity:	Human, Mouse, Rat
Host:	Rabbit
Clonality:	Polyclonal
Conjugate:	This HSP90AB1 antibody is un-conjugated
Application:	Western Blotting (WB), Immunofluorescence (IF), Immunohistochemistry (Paraffin-embedded Sections) (IHC (p)), Immunocytochemistry (ICC)

Product Details

Immunogen:	Recombinant protein encompassing a sequence within the center region of human HSP90 beta. The exact sequence is proprietary.
Isotype:	IgG
Cross-Reactivity:	Rhesus Monkey, Cow (Bovine)
Cross-Reactivity (Details):	Rhesus Monkey (100 %), Bovine (100 %)
Characteristics:	Rabbit Polyclonal antibody to HSP90 beta (heat shock protein 90 kDa alpha (cytosolic), class B member 1) HSP90 beta antibody [N2C2], Internal
Purification:	Affinity purified by Protein A.

Target Details

Target:	HSP90AB1
Alternative Name:	HSP90 beta (HSP90AB1 Products)
Background:	<p>HSP90 proteins are highly conserved molecular chaperones that have key roles in signal transduction, protein folding, protein degradation, and morphologic evolution. HSP90 proteins normally associate with other cochaperones and play important roles in folding newly synthesized proteins or stabilizing and refolding denatured proteins after stress. There are 2 major cytosolic HSP90 proteins, HSP90AA1 (MIM 140571), an inducible form, and HSP90AB1, a constitutive form. Other HSP90 proteins are found in endoplasmic reticulum (HSP90B1, MIM 191175) and mitochondria (TRAP1, MIM 606219) (Chen et al., 2005 [PubMed 16269234]).[supplied by OMIM]</p> <p>Cellular Localization: Cytoplasm , Melanosome</p>
Molecular Weight:	83 kDa
Gene ID:	3326
Pathways:	Regulation of Cell Size

Application Details

Application Notes:	<p>Suggested dilution Reference ICC/IF 1:100-1:1000* IHC (Formalin-fixed paraffin-embedded sections) 1:100-1:1000* Western blot 1:500-1:3000* Not tested in other applications. *Optimal dilutions/concentrations should be determined by the researcher.Suggested dilutionReferenceICC/IF1:100-1:1000* IHC (Formalin-fixed paraffin-embedded sections)1:100-1:1000* Western blot1:500-1:3000*</p>
Comment:	Positive Control: HeLaS3
Restrictions:	For Research Use only

Handling

Format:	Liquid
Concentration:	5.43 mg/mL
Buffer:	0.1M Tris, 0.1M Glycine, 10 % Glycerol (pH 7). 0.01 % Thimerosal was added as a preservative.
Preservative:	Thimerosal (Merthiolate)
Precaution of Use:	This product contains Thimerosal (Merthiolate): a POISONOUS AND HAZARDOUS SUBSTANCE

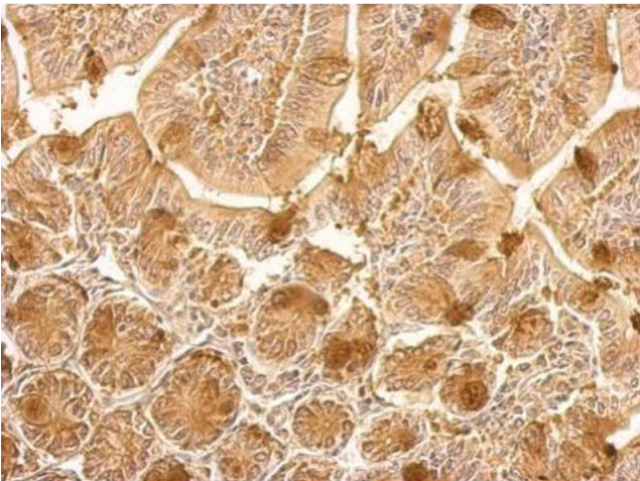
Handling

	which should be handled by trained staff only.
Storage:	-20 °C
Storage Comment:	Keep as concentrated solution. Aliquot and store at -20°C or below. Avoid multiple freeze-thaw cycles.

Publications

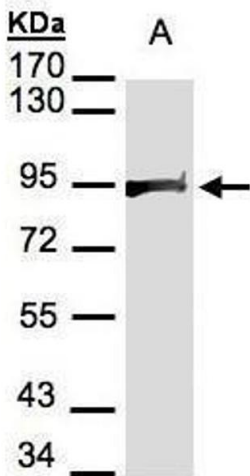
Product cited in:	Galmozzi, Kok, Kim, Montenegro-Burke, Lee, Spreafico, Mosure, Albert, Cintron-Colon, Godio, Webb, Conti, Solt, Kojetin, Parker, Peluso, Pru, Siuzdak, Cravatt, Saez: "PGRMC2 is an intracellular haem chaperone critical for adipocyte function." in: Nature , Vol. 576, Issue 7785, pp. 138-142, (2020) (PubMed).
-------------------	---

Validation report #104339 for Multiplex Immunohistochemistry (mIHC)



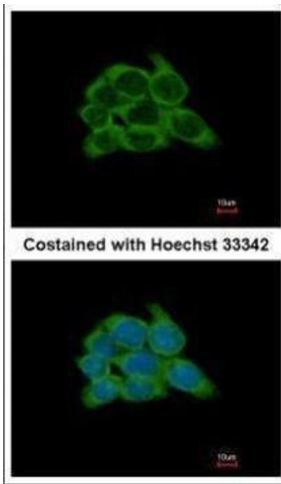
Immunohistochemistry

Image 1. IHC-P Image HSP90 beta antibody [N2C2], Internal detects HSP90AB1 protein at cytosol on mouse colon by immunohistochemical analysis. Sample: Paraffin-embedded mouse colon. HSP90 beta antibody [N2C2], Internal , dilution: 1:500.



Western Blotting

Image 2. WB Image Sample(30 µg of whole cell lysate) A:HeLa S3, 7.5% SDS PAGE antibody diluted at 1:2000



Immunofluorescence

Image 3. ICC/IF Image Immunofluorescence analysis of methanol-fixed HCT116, using HSP90 beta, antibody at 1:500 dilution.

Please check the [product details page](#) for more images. Overall 5 images are available for ABIN2855037.