

Datasheet for ABIN2855040
anti-ARHGDI2 antibody



[Go to Product page](#)

3 Images

Overview

Quantity:	100 µL
Target:	ARHGDI2
Reactivity:	Human
Host:	Rabbit
Clonality:	Polyclonal
Conjugate:	This ARHGDI2 antibody is un-conjugated
Application:	Western Blotting (WB)

Product Details

Immunogen:	Recombinant protein encompassing a sequence within the center region of human Rho GDI alpha. The exact sequence is proprietary.
Isotype:	IgG
Cross-Reactivity:	Human, Mouse
Characteristics:	Rabbit Polyclonal antibody to RhoGDI (Rho GDP dissociation inhibitor (GDI) alpha) RhoGDI antibody [N1C3]
Purification:	Purified by antigen-affinity chromatography.

Target Details

Target:	ARHGDI2
Alternative Name:	Rho GDP dissociation inhibitor alpha (ARHGDI2 Products)

Target Details

Background: Aplysia Ras-related homologs (ARHs), also called Rho genes, belong to the RAS gene superfamily encoding small guanine nucleotide exchange (GTP/GDP) factors. The ARH proteins may be kept in the inactive, GDP-bound state by interaction with GDP dissociation inhibitors, such as ARHGDI1 (Leffers et al., 1993 [PubMed 8262133]).[supplied by OMIM]

Cellular Localization: Cytoplasm

Molecular Weight: 23 kDa

Gene ID: 396

UniProt: [P52565](#)

Pathways: [Neurotrophin Signaling Pathway](#)

Application Details

Application Notes: WB: 1:500-1:10000. Optimal dilutions/concentrations should be determined by the researcher. Not tested in other applications.

Comment: Positive Control: Mouse brain

Restrictions: For Research Use only

Handling

Format: Liquid

Concentration: 0.76 mg/mL

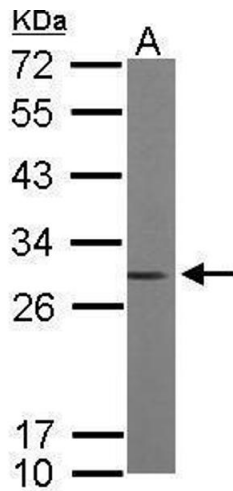
Buffer: 0.1M Tris-Glycine (pH 7), 10 % Glycerol, 0.01 % Thimerosal

Preservative: Thimerosal (Merthiolate)

Precaution of Use: This product contains Thimerosal (Merthiolate): a POISONOUS AND HAZARDOUS SUBSTANCE which should be handled by trained staff only.

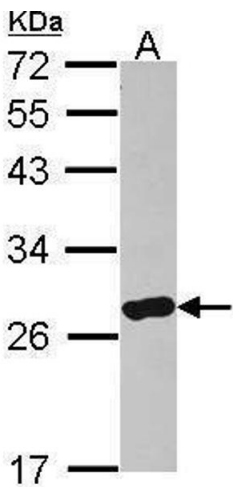
Storage: 4 °C,-20 °C

Storage Comment: Store as concentrated solution. Centrifuge briefly prior to opening vial. For short-term storage (1-2 weeks), store at 4°C. For long-term storage, aliquot and store at -20°C or below. Avoid multiple freeze-thaw cycles.



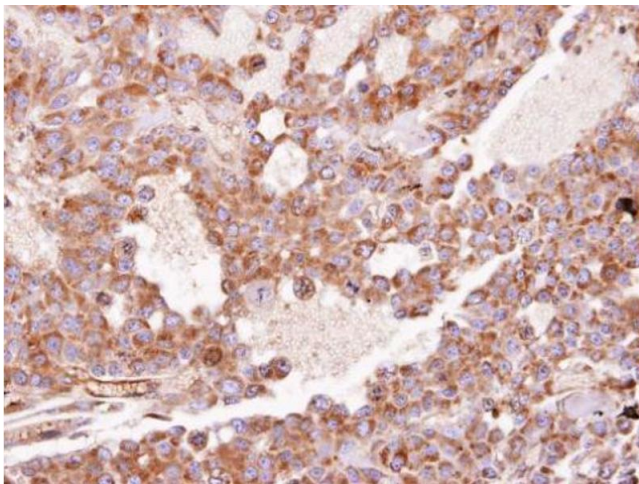
Western Blotting

Image 1. WB Image Sample (50 ug of whole cell lysate) A: mouse brain 12% SDS PAGE antibody diluted at 1:10000



Western Blotting

Image 2. WB Image Sample (30 ug of whole cell lysate) A: IMR32 12% SDS PAGE antibody diluted at 1:500



Immunohistochemistry

Image 3. IHC-P Image Immunohistochemical analysis of paraffin-embedded HUH7 xenograft, using RhoGDI, antibody at 1:100 dilution.