



Datasheet for ABIN2855043  
**anti-CSNK2B antibody**



[Go to Product page](#)

5 Images

Overview

Quantity:	100 µL
Target:	CSNK2B
Reactivity:	Human
Host:	Rabbit
Clonality:	Polyclonal
Conjugate:	This CSNK2B antibody is un-conjugated
Application:	Western Blotting (WB), Immunohistochemistry (Paraffin-embedded Sections) (IHC (p)), Immunofluorescence (IF), Immunocytochemistry (ICC)

Product Details

Immunogen:	Recombinant protein encompassing a sequence within the center region of human Casein Kinase 2 beta. The exact sequence is proprietary.
Isotype:	IgG
Cross-Reactivity:	Human, Mouse
Characteristics:	Rabbit Polyclonal antibody to Casein Kinase 2 beta (casein kinase 2, beta polypeptide) Casein Kinase 2 beta antibody
Purification:	Purified by antigen-affinity chromatography.

Target Details

Target:	CSNK2B
Alternative Name:	casein kinase 2 beta ( <a href="#">CSNK2B Products</a> )

## Target Details

---

**Background:** This gene encodes the beta subunit of casein kinase II, a ubiquitous protein kinase which regulates metabolic pathways, signal transduction, transcription, translation, and replication. The enzyme is composed of three subunits, alpha, alpha prime and beta, which form a tetrameric holoenzyme. The alpha and alpha prime subunits are catalytic, while the beta subunit serves regulatory functions. The enzyme localizes to the endoplasmic reticulum and the Golgi apparatus.

---

**Molecular Weight:** 25 kDa

---

**Gene ID:** 1460

---

**UniProt:** [P67870](#)

---

**Pathways:** [SARS-CoV-2 Protein Interactome](#)

## Application Details

---

**Application Notes:** WB: 1:500-1:5000. ICC/IF: 1:100-1:1000. IHC-P: 1:100-1:1000. Optimal dilutions/concentrations should be determined by the researcher. Not tested in other applications.

---

**Restrictions:** For Research Use only

## Handling

---

**Format:** Liquid

---

**Concentration:** 0.15 mg/mL

---

**Buffer:** 1XPBS pH 7, 1 % BSA, 20 % Glycerol, 0.025 % ProClin 300

---

**Preservative:** ProClin

---

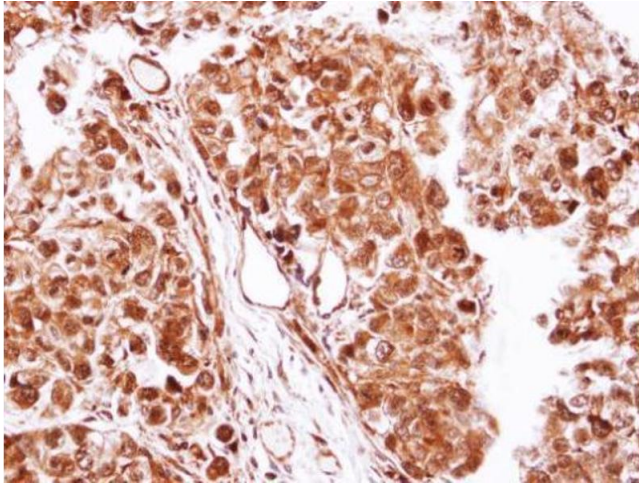
**Precaution of Use:** This product contains ProClin: a POISONOUS AND HAZARDOUS SUBSTANCE which should be handled by trained staff only.

---

**Storage:** 4 °C, -20 °C

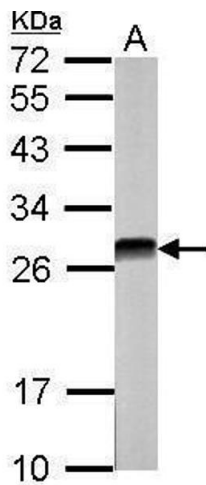
---

**Storage Comment:** Store as concentrated solution. Centrifuge briefly prior to opening vial. For short-term storage (1-2 weeks), store at 4°C. For long-term storage, aliquot and store at -20°C or below. Avoid multiple freeze-thaw cycles.



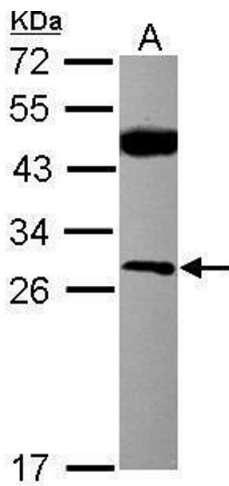
### Immunohistochemistry

**Image 1.** IHC-P Image Immunohistochemical analysis of paraffin-embedded CL1-0 xenograft, using Casein Kinase 2 beta, antibody at 1:100 dilution.



### Western Blotting

**Image 2.** WB Image Sample (30 ug of whole cell lysate) A: NIH-3T3 12% SDS PAGE antibody diluted at 1:5000



### Western Blotting

**Image 3.** WB Image Sample (30 ug of whole cell lysate) A: MCF-7 12% SDS PAGE antibody diluted at 1:500

Please check the [product details page](#) for more images. Overall 5 images are available for ABIN2855043.