

Datasheet for ABIN2855048

anti-SAFB antibody**6** Images[Go to Product page](#)

Overview

Quantity:	100 µL
Target:	SAFB
Reactivity:	Human
Host:	Rabbit
Clonality:	Polyclonal
Conjugate:	This SAFB antibody is un-conjugated
Application:	Western Blotting (WB), Immunofluorescence (IF), Immunohistochemistry (Paraffin-embedded Sections) (IHC (p)), Immunocytochemistry (ICC)

Product Details

Immunogen:	Recombinant protein encompassing a sequence within the center region of human SAFB. The exact sequence is proprietary.
Isotype:	IgG
Cross-Reactivity:	Human, Mouse, Rat
Characteristics:	Rabbit polyclonal antibody to Scaffold attachment factor B1 (scaffold attachment factor B) Scaffold attachment factor B1 antibody
Purification:	Purified by antigen-affinity chromatography.

Target Details

Target:	SAFB
Alternative Name:	scaffold attachment factor B (SAFB Products)

Target Details

Background: This gene encodes a DNA-binding protein that has high specificity for scaffold or matrix attachment region DNA elements (S/MAR DNA). This protein is thought to be involved in attaching the base of chromatin loops to the nuclear matrix but there is conflicting evidence as to whether this protein is a component of chromatin or a nuclear matrix protein. Scaffold attachment factors are a specific subset of nuclear matrix proteins (NMP) that specifically bind to S/MAR. This encoded protein is thought to serve as a molecular base to assemble a 'transcriptosome complex' in the vicinity of actively transcribed genes. It is involved in the regulation of the heat shock protein 27 transcription and also can act as an estrogen receptor corepressor. This gene is a candidate gene for breast tumorigenesis.

Cellular Localization: Nucleus

Molecular Weight: 103 kDa

Gene ID: 6294

UniProt: [Q15424](#)

Pathways: [Intracellular Steroid Hormone Receptor Signaling Pathway](#)

Application Details

Application Notes: WB: 1:500-1:3000. ICC/IF: 1:100-1:1000. IHC-P: 1:100-1:1000. Optimal dilutions/concentrations should be determined by the researcher. Not tested in other applications.

Comment: Positive Control: 293T , A431 , HeLa , HepG2

Restrictions: For Research Use only

Handling

Format: Liquid

Concentration: 1 mg/mL

Buffer: 0.1M Tris-Glycine (pH 7), 10 % Glycerol, 0.01 % Thimerosal

Preservative: Thimerosal (Merthiolate)

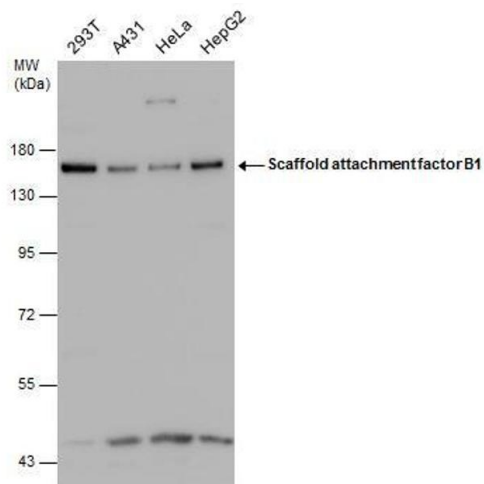
Precaution of Use: This product contains Thimerosal (Merthiolate): a POISONOUS AND HAZARDOUS SUBSTANCE which should be handled by trained staff only.

Storage: 4 °C,-20 °C

Storage Comment: Store as concentrated solution. Centrifuge briefly prior to opening vial. For short-term storage

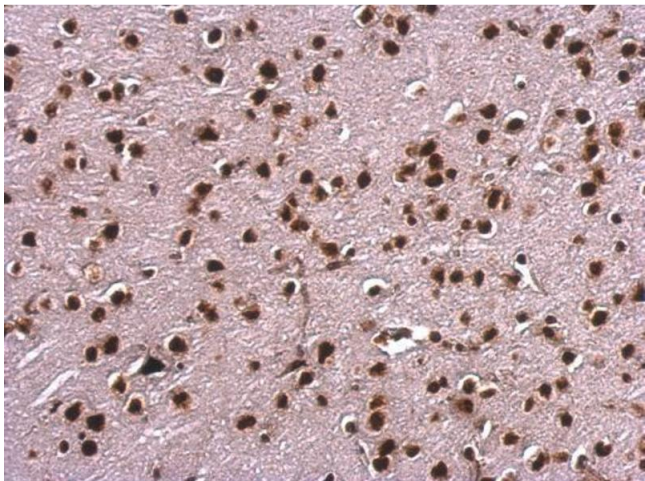
(1-2 weeks), store at 4°C. For long-term storage, aliquot and store at -20°C or below. Avoid multiple freeze-thaw cycles.

Images



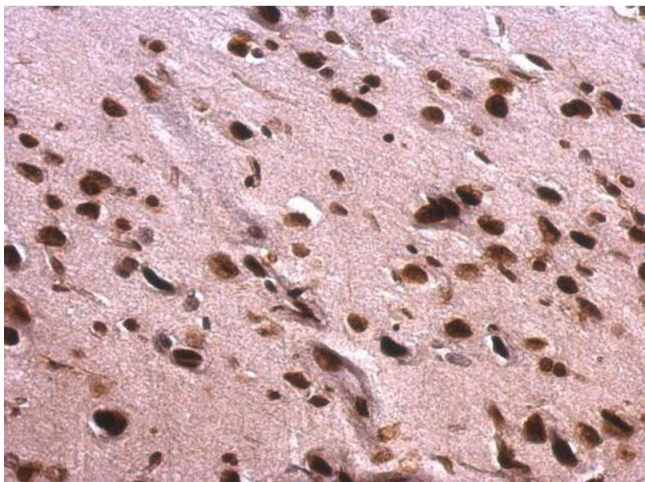
Western Blotting

Image 1. WB Image Various whole cell extracts (30 µg) were separated by 7.5% SDS-PAGE, and the membrane was blotted with Scaffold attachment factor B1 antibody , diluted at 1:1000.



Immunohistochemistry

Image 2. IHC-P Image Scaffold attachment factor B1 antibody detects Scaffold attachment factor B1 protein at nucleus on mouse fore brain by immunohistochemical analysis. Sample: Paraffin-embedded mouse fore brain. Scaffold attachment factor B1 antibody , dilution: 1:500.



Immunohistochemistry

Image 3. IHC-P Image Scaffold attachment factor B1 antibody detects Scaffold attachment factor B1 protein at nucleus on rat fore brain by immunohistochemical analysis. Sample: Paraffin-embedded rat fore brain. Scaffold attachment factor B1 antibody , dilution: 1:500.

Please check the [product details page](#) for more images. Overall 6 images are available for ABIN2855048.