

Datasheet for ABIN2855049
anti-APOE antibody (N-Term)

3 Images

1 Publication

[Go to Product page](#)

Overview

Quantity:	100 µL
Target:	APOE
Binding Specificity:	N-Term
Reactivity:	Human
Host:	Rabbit
Clonality:	Polyclonal
Conjugate:	This APOE antibody is un-conjugated
Application:	Western Blotting (WB), Immunohistochemistry (Paraffin-embedded Sections) (IHC (p)), Immunocytochemistry (ICC), Immunofluorescence (IF)

Product Details

Immunogen:	Recombinant protein encompassing a sequence within the N-terminus region of human Apolipoprotein E. The exact sequence is proprietary.
Isotype:	IgG
Cross-Reactivity:	Human
Characteristics:	Rabbit Polyclonal antibody to Apolipoprotein E (apolipoprotein E) Apolipoprotein E antibody
Purification:	Purified by antigen-affinity chromatography.

Target Details

Target:	APOE
---------	------

Target Details

Alternative Name:	apolipoprotein E (APOE Products)
Background:	<p>Chylomicron remnants and very low density lipoprotein (VLDL) remnants are rapidly removed from the circulation by receptor-mediated endocytosis in the liver. Apolipoprotein E, a main apoprotein of the chylomicron, binds to a specific receptor on liver cells and peripheral cells. ApoE is essential for the normal catabolism of triglyceride-rich lipoprotein constituents. The APOE gene is mapped to chromosome 19 in a cluster with APOC1 and APOC2. Defects in apolipoprotein E result in familial dysbetalipoproteinemia, or type III hyperlipoproteinemia (HLP III), in which increased plasma cholesterol and triglycerides are the consequence of impaired clearance of chylomicron and VLDL remnants.</p> <p>Cellular Localization: Secreted</p>
Molecular Weight:	36 kDa
Gene ID:	348
UniProt:	P02649
Pathways:	Regulation of Cell Size , Lipid Metabolism

Application Details

Application Notes:	WB: 1:500-1:3000. ICC/IF: 1:100-1:1000. IHC-P: 1:100-1:1000. Optimal dilutions/concentrations should be determined by the researcher. Not tested in other applications.
Comment:	Positive Control: A549 , human plasma
Restrictions:	For Research Use only

Handling

Format:	Liquid
Concentration:	1 mg/mL
Buffer:	1XPBS (pH 7), 1 % BSA, 20 % Glycerol, 0.01 % Thimerosal
Preservative:	Thimerosal (Merthiolate)
Precaution of Use:	This product contains Thimerosal (Merthiolate): a POISONOUS AND HAZARDOUS SUBSTANCE which should be handled by trained staff only.
Storage:	4 °C,-20 °C

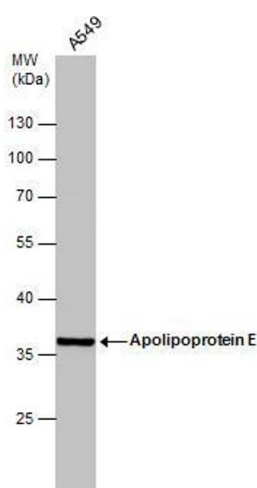
Handling

Storage Comment: Store as concentrated solution. Centrifuge briefly prior to opening vial. For short-term storage (1-2 weeks), store at 4°C. For long-term storage, aliquot and store at -20°C or below. Avoid multiple freeze-thaw cycles.

Publications

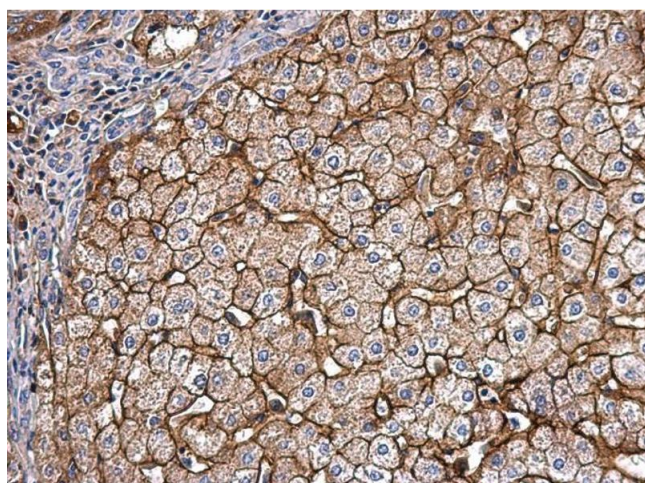
Product cited in: Sarin, Engel, Rothweiler, Cinatl, Michaelis, Frötschl, Fröhlich, Kalayda: "Key Players of Cisplatin Resistance: Towards a Systems Pharmacology Approach." in: **International journal of molecular sciences**, Vol. 19, Issue 3, (2018) ([PubMed](#)).

Images



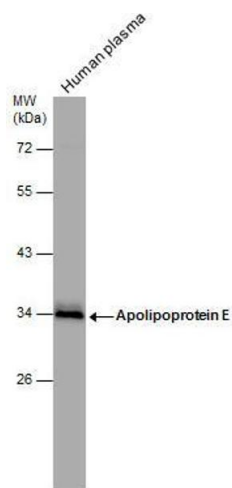
Western Blotting

Image 1. WB Image Whole cell extract (30 µg) was separated by 10% SDS-PAGE, and the membrane was blotted with Apolipoprotein E antibody, diluted at 1:1000.



Immunohistochemistry

Image 2. IHC-P Image Apolipoprotein E antibody detects Apolipoprotein E protein at secreted on human hepatoma by immunohistochemical analysis. Sample: Paraffin-embedded human hepatoma. Apolipoprotein E antibody, dilution: 1:500.



Western Blotting

Image 3. WB Image Human tissue extract (30 µg) was separated by 10% SDS-PAGE, and the membrane was blotted with Apolipoprotein E antibody, diluted at 1:1000.