



Datasheet for ABIN2855051 anti-BTF3 antibody



[Go to Product page](#)

1 Image

Overview

Quantity:	100 µL
Target:	BTF3
Reactivity:	Human
Host:	Rabbit
Clonality:	Polyclonal
Conjugate:	This BTF3 antibody is un-conjugated
Application:	Western Blotting (WB)

Product Details

Immunogen:	Recombinant protein encompassing a sequence within the center region of human BTF3. The exact sequence is proprietary.
Isotype:	IgG
Cross-Reactivity:	Human
Characteristics:	Rabbit polyclonal antibody to BTF3 (basic transcription factor 3) BTF3 antibody [N1C3]
Purification:	Purified by antigen-affinity chromatography.

Target Details

Target:	BTF3
Alternative Name:	basic transcription factor 3 (BTF3 Products)

Target Details

Background: This gene encodes the basic transcription factor 3. This protein forms a stable complex with RNA polymerase IIB and is required for transcriptional initiation. Alternative splicing results in multiple transcript variants encoding different isoforms. This gene has multiple pseudogenes.

Cellular Localization: Nucleus

Molecular Weight: 22 kDa

Gene ID: 689

UniProt: [P20290](#)

Application Details

Application Notes: WB: 1:500-1:3000. Optimal dilutions/concentrations should be determined by the researcher. Not tested in other applications.

Comment: Positive Control: H1299

Restrictions: For Research Use only

Handling

Format: Liquid

Concentration: 0.4 mg/mL

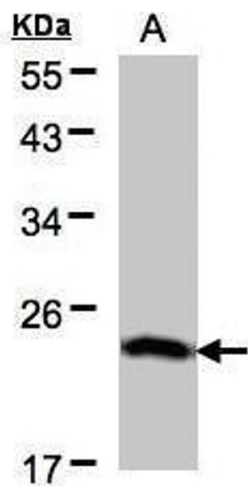
Buffer: 0.1M Tris-Glycine (pH 7), 10 % Glycerol, 0.01 % Thimerosal

Preservative: Thimerosal (Merthiolate)

Precaution of Use: This product contains Thimerosal (Merthiolate): a POISONOUS AND HAZARDOUS SUBSTANCE which should be handled by trained staff only.

Storage: 4 °C,-20 °C

Storage Comment: Store as concentrated solution. Centrifuge briefly prior to opening vial. For short-term storage (1-2 weeks), store at 4°C. For long-term storage, aliquot and store at -20°C or below. Avoid multiple freeze-thaw cycles.



Western Blotting

Image 1. WB Image Sample(30 µg of whole cell lysate)
A:H1299 12% SDS PAGE antibody diluted at 1:500