

Datasheet for ABIN2855053
anti-SLC9A3R2 antibody (Center)

2 Images

[Go to Product page](#)

Overview

Quantity:	100 µL
Target:	SLC9A3R2
Binding Specificity:	Center
Reactivity:	Human, Mouse
Host:	Rabbit
Clonality:	Polyclonal
Conjugate:	This SLC9A3R2 antibody is un-conjugated
Application:	Western Blotting (WB)

Product Details

Immunogen:	Recombinant protein encompassing a sequence within the center region of human NHERF-2. The exact sequence is proprietary.
Isotype:	IgG
Cross-Reactivity:	Rabbit
Cross-Reactivity (Details):	Rabbit (83 %)
Characteristics:	Rabbit Polyclonal antibody to NHERF-2 (solute carrier family 9 (sodium/hydrogen exchanger), member 3 regulator 2) NHERF-2 antibody [N2C3]
Purification:	Affinity purified by Protein A.

Target Details

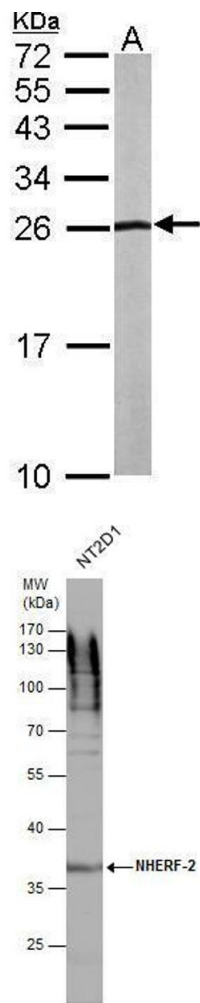
Target:	SLC9A3R2
Alternative Name:	NHERF-2 (SLC9A3R2 Products)
Background:	<p>NHE3 (SLC9A3, MIM 182307) is a sodium/hydrogen exchanger in the brush border membrane of the proximal tubule, small intestine, and colon that plays a major role in transepithelial sodium absorption. SLC9A3R2, as well as SLC9A3R1 (MIM 604990) and protein kinase A phosphorylation, may play a role in NHE3 regulation.[supplied by OMIM]</p> <p>Cellular Localization: Endomembrane system, Peripheral membrane protein , Nucleus</p>
Molecular Weight:	37 kDa
Gene ID:	9351

Application Details

Application Notes:	<p>Suggested dilution Reference Western blot 1:500-1:3000* Not tested in other applications.</p> <p>*Optimal dilutions/concentrations should be determined by the researcher.Suggested dilutionReferenceWestern blot1:500-1:3000*</p>
Comment:	Positive Control: NT2D1 , mouse liver
Restrictions:	For Research Use only

Handling

Format:	Liquid
Concentration:	5.91 mg/mL
Buffer:	0.1M Tris, 0.1M Glycine, 10 % Glycerol (pH 7). 0.01 % Thimerosal was added as a preservative.
Preservative:	Thimerosal (Merthiolate)
Precaution of Use:	This product contains Thimerosal (Merthiolate): a POISONOUS AND HAZARDOUS SUBSTANCE which should be handled by trained staff only.
Storage:	-20 °C
Storage Comment:	Keep as concentrated solution. Aliquot and store at -20°C or below. Avoid multiple freeze-thaw cycles.



Western Blotting

Image 1. WB Image Sample (50 ug of whole cell lysate) A: mouse liver 15% SDS PAGE antibody diluted at 1:1000

Western Blotting

Image 2. WB Image NHERF-2 antibody detects NHERF-2 protein by western blot analysis. Whole cell extracts (30 µg) was separated by 10 % SDS-PAGE, and blotted with NHERF-2 antibody , diluted by 1:1000