

Datasheet for ABIN2855056  
**anti-ARHGAP1 antibody (N-Term)**[Go to Product page](#)

## 2 Images

## Overview

Quantity:	100 µL
Target:	ARHGAP1
Binding Specificity:	N-Term
Reactivity:	Human
Host:	Rabbit
Clonality:	Polyclonal
Conjugate:	This ARHGAP1 antibody is un-conjugated
Application:	Western Blotting (WB), Immunofluorescence (IF), Immunocytochemistry (ICC)

## Product Details

Immunogen:	Recombinant protein encompassing a sequence within the N-terminus region of human ARHGAP1. The exact sequence is proprietary.
Isotype:	IgG
Cross-Reactivity:	Human
Characteristics:	Rabbit polyclonal antibody to ARHGAP1 (Rho GTPase activating protein 1) ARHGAP1 antibody [N1N3]
Purification:	Purified by antigen-affinity chromatography.

## Target Details

Target:	ARHGAP1
---------	---------

## Target Details

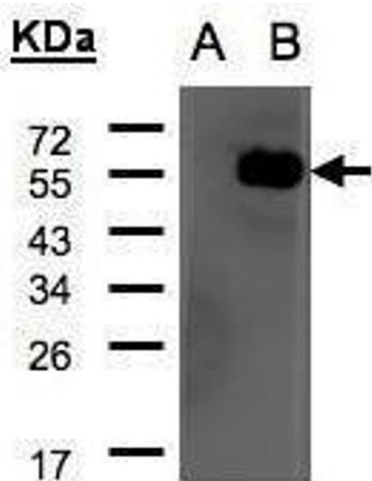
Alternative Name:	Rho GTPase activating protein 1 ( <a href="#">ARHGAP1 Products</a> )
Background:	GTPase activator for the Rho, Rac and Cdc42 proteins, converting them to the putatively inactive GDP-bound state. Cdc42 seems to be the preferred substrate.  Cellular Localization: Cytoplasm
Molecular Weight:	50 kDa
Gene ID:	392
UniProt:	<a href="#">Q07960</a>

## Application Details

Application Notes:	WB: 1:500-1:3000. ICC/IF: 1:100-1:1000. Optimal dilutions/concentrations should be determined by the researcher. Not tested in other applications.
Comment:	Positive Control: human ARHGAP1-transfected 293T , 293T , A431 , HeLa , HepG2 Validation: Overexpression
Restrictions:	For Research Use only

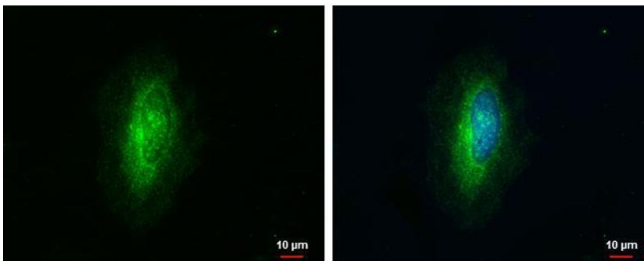
## Handling

Format:	Liquid
Concentration:	1 mg/mL
Buffer:	1XPBS ( pH 7), 20 % Glycerol, 0.01 % Thimerosal
Preservative:	Thimerosal (Merthiolate)
Precaution of Use:	This product contains Thimerosal (Merthiolate): a POISONOUS AND HAZARDOUS SUBSTANCE which should be handled by trained staff only.
Storage:	4 °C,-20 °C
Storage Comment:	Store as concentrated solution. Centrifuge briefly prior to opening vial. For short-term storage (1-2 weeks), store at 4°C. For long-term storage, aliquot and store at -20°C or below. Avoid multiple freeze-thaw cycles.



Western Blotting

**Image 1.** WB Image Western Blot analysis of ARHGAP1 expression in transfected 293T cell line by ARHGAP1 polyclonal antibody. A: Non-transfected lysate. B: ARHGAP1 transfected lysate. 12% SDS PAGE antibody diluted at 1:500



Immunofluorescence

**Image 2.** ICC/IF Image ARHGAP1 antibody [N1N3] detects ARHGAP1 protein at cytoplasm by immunofluorescent analysis. Sample: HeLa cells were fixed in ice-cold MeOH for 5 min. Green: ARHGAP1 protein stained by ARHGAP1 antibody [N1N3] , diluted at 1:500. Blue: Hoechst 33342 staining.