

Datasheet for ABIN2855058

**anti-TKT antibody**

## 4 Images

[Go to Product page](#)

## Overview

Quantity:	100 µL
Target:	TKT
Reactivity:	Human
Host:	Rabbit
Clonality:	Polyclonal
Conjugate:	This TKT antibody is un-conjugated
Application:	Western Blotting (WB), Immunofluorescence (IF), Immunocytochemistry (ICC), Immunohistochemistry (Paraffin-embedded Sections) (IHC (p))

## Product Details

Immunogen:	Recombinant protein encompassing a sequence within the center region of human Transketolase. The exact sequence is proprietary.
Isotype:	IgG
Cross-Reactivity:	Human, Mouse
Characteristics:	Rabbit Polyclonal antibody to Transketolase (transketolase) Transketolase antibody [N3C2], Internal
Purification:	Purified by antigen-affinity chromatography.

## Target Details

Target:	TKT
Alternative Name:	transketolase ( <a href="#">TKT Products</a> )

## Target Details

**Background:** This gene encodes a thiamine-dependent enzyme which plays a role in the channeling of excess sugar phosphates to glycolysis in the pentose phosphate pathway. Multiple alternatively spliced variants, encoding the same protein, have been identified.

**Molecular Weight:** 68 kDa

**Gene ID:** 7086

**UniProt:** [P29401](#)

## Application Details

**Application Notes:** WB: 1:500-1:3000. ICC/IF: 1:100-1:1000. IHC-P: 1:100-1:1000. Optimal dilutions/concentrations should be determined by the researcher. Not tested in other applications.

**Comment:** Positive Control: Raji , 293T , A431 , HeLa , HepG2 , mouse liver

**Restrictions:** For Research Use only

## Handling

**Format:** Liquid

**Concentration:** 1 mg/mL

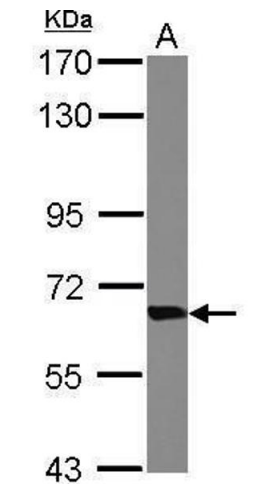
**Buffer:** 1XPBS ( pH 7), 1 % BSA, 20 % Glycerol, 0.01 % Thimerosal

**Preservative:** Thimerosal (Merthiolate)

**Precaution of Use:** This product contains Thimerosal (Merthiolate): a POISONOUS AND HAZARDOUS SUBSTANCE which should be handled by trained staff only.

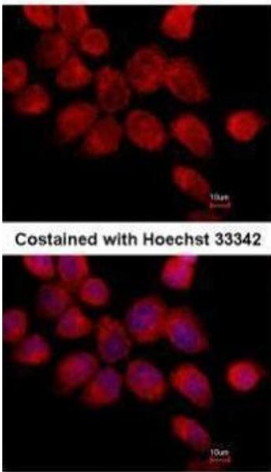
**Storage:** 4 °C, -20 °C

**Storage Comment:** Store as concentrated solution. Centrifuge briefly prior to opening vial. For short-term storage (1-2 weeks), store at 4°C. For long-term storage, aliquot and store at -20°C or below. Avoid multiple freeze-thaw cycles.



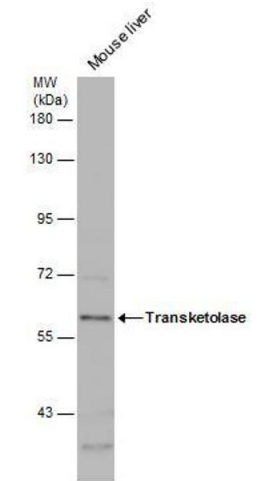
**Western Blotting**

**Image 1.** WB Image Sample (30 ug of whole cell lysate) A: Raji 7.5% SDS PAGE antibody diluted at 1:1000



**Immunofluorescence**

**Image 2.** ICC/IF Image Immunofluorescence analysis of paraformaldehyde-fixed A431, using Transketolase, antibody at 1:500 dilution.



**Western Blotting**

**Image 3.** WB Image Mouse tissue extract (50 µg) was separated by 7.5% SDS-PAGE, and the membrane was blotted with Transketolase antibody [N3C2], Internal , diluted at 1:1000.

Please check the [product details page](#) for more images. Overall 4 images are available for ABIN2855058.