

Datasheet for ABIN2855060

anti-EIF4A2 antibody**3** Images[Go to Product page](#)

Overview

Quantity:	100 µL
Target:	EIF4A2
Reactivity:	Human
Host:	Rabbit
Clonality:	Polyclonal
Conjugate:	This EIF4A2 antibody is un-conjugated
Application:	Western Blotting (WB), Immunohistochemistry (Paraffin-embedded Sections) (IHC (p)), Immunofluorescence (IF), Immunocytochemistry (ICC), Immunohistochemistry (Whole Mount) (IHC (wm))

Product Details

Immunogen:	Recombinant protein encompassing a sequence within the center region of human EIF4A2. The exact sequence is proprietary.
Isotype:	IgG
Specificity:	Based on sequence homology, this antibody may cross react with EIF4A1 or EIF4A3 protein.
Cross-Reactivity:	Human, Zebrafish (Danio rerio)
Characteristics:	Rabbit Polyclonal antibody to EIF4A2 (eukaryotic translation initiation factor 4A2) EIF4A2 antibody
Purification:	Purified by antigen-affinity chromatography.

Target Details

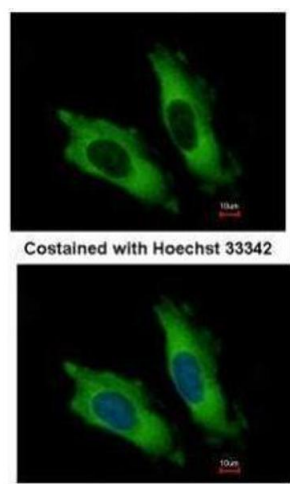
Target:	EIF4A2
Alternative Name:	eukaryotic translation initiation factor 4A2 (EIF4A2 Products)
Molecular Weight:	46 kDa
Gene ID:	1974
UniProt:	Q14240

Application Details

Application Notes:	WB: 1:1000-1:20000. ICC/IF: 1:100-1:1000. IHC-P: 1:100-1:1000. Optimal dilutions/concentrations should be determined by the researcher. Not tested in other applications.
Comment:	Positive Control: HeLa , HepG2
Restrictions:	For Research Use only

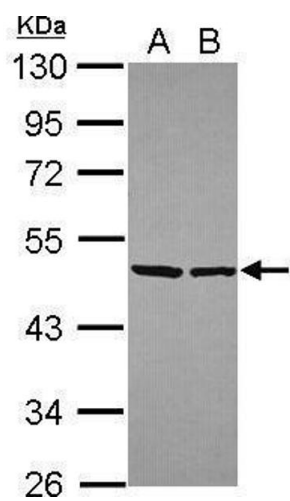
Handling

Format:	Liquid
Concentration:	1 mg/mL
Buffer:	1XPBS (pH 7), 1 % BSA, 20 % Glycerol, 0.01 % Thimerosal
Preservative:	Thimerosal (Merthiolate)
Precaution of Use:	This product contains Thimerosal (Merthiolate): a POISONOUS AND HAZARDOUS SUBSTANCE which should be handled by trained staff only.
Storage:	4 °C,-20 °C
Storage Comment:	Store as concentrated solution. Centrifuge briefly prior to opening vial. For short-term storage (1-2 weeks), store at 4°C. For long-term storage, aliquot and store at -20°C or below. Avoid multiple freeze-thaw cycles.



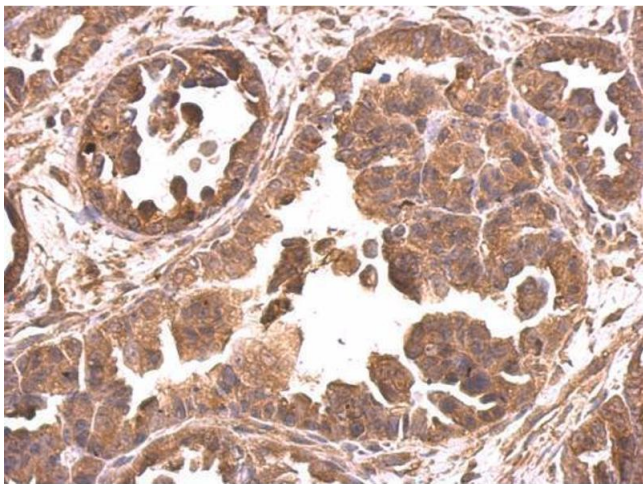
Immunofluorescence

Image 1. ICC/IF Image Immunofluorescence analysis of methanol-fixed HeLa, using EIF4A2, antibody at 1:500 dilution.



Western Blotting

Image 2. WB Image Sample (30 ug of whole cell lysate) A: HeLa B: Hep G2 , 10% SDS PAGE antibody diluted at 1:10000



Immunohistochemistry

Image 3. IHC-P Image EIF4A2 antibody detects EIF4A2 protein at cytosol on human ovarian carcinoma by immunohistochemical analysis. Sample: Paraffin-embedded ovarian carcinoma. EIF4A2 antibody , dilution: 1:500.