



Datasheet for ABIN2855066

anti-Ensa antibody



[Go to Product page](#)

5 Images

Overview

| | |
|--------------|--|
| Quantity: | 100 µL |
| Target: | Ensa (ENSA) |
| Reactivity: | Human |
| Host: | Rabbit |
| Clonality: | Polyclonal |
| Conjugate: | This Ensa antibody is un-conjugated |
| Application: | Western Blotting (WB), Immunofluorescence (IF), Immunocytochemistry (ICC), Immunohistochemistry (Paraffin-embedded Sections) (IHC (p)) |

Product Details

| | |
|-------------------|--|
| Immunogen: | Recombinant protein encompassing a sequence within the center region of human ENSA. The exact sequence is proprietary. |
| Isotype: | IgG |
| Cross-Reactivity: | Human, Mouse, Rat |
| Characteristics: | Rabbit Polyclonal antibody to ENSA (endosulfine alpha) ENSA antibody |
| Purification: | Purified by antigen-affinity chromatography. |
| Grade: | KO Validated |

Target Details

| | |
|---------|-------------|
| Target: | Ensa (ENSA) |
|---------|-------------|

Target Details

Alternative Name: endosulfine alpha ([ENSA Products](#))

Background: The protein encoded by this gene belongs to a highly conserved cAMP-regulated phosphoprotein (ARPP) family. This protein was identified as an endogenous ligand for the sulfonylurea receptor, ABCC8/SUR1. ABCC8 is the regulatory subunit of the ATP-sensitive potassium (KATP) channel, which is located on the plasma membrane of pancreatic beta cells and plays a key role in the control of insulin release from pancreatic beta cells. This protein is thought to be an endogenous regulator of KATP channels. In vitro studies have demonstrated that this protein modulates insulin secretion through the interaction with KATP channel, and this gene has been proposed as a candidate gene for type 2 diabetes. At least eight alternatively spliced transcript variants encoding distinct isoforms have been observed.

Cellular Localization: Cytoplasm

Molecular Weight: 13 kDa

Gene ID: 2029

UniProt: [O43768](#)

Application Details

Application Notes: WB: 1:500-1:3000. ICC/IF: 1:100-1:1000. IHC-P: 1:100-1:1000. Optimal dilutions/concentrations should be determined by the researcher. Not tested in other applications.

Comment: Positive Control: 293T
Validation: KO/KD

Restrictions: For Research Use only

Handling

Format: Liquid

Concentration: 0.6 mg/mL

Buffer: 1XPBS (pH 7), 1 % BSA, 20 % Glycerol, 0.01 % Thimerosal

Preservative: Thimerosal (Merthiolate)

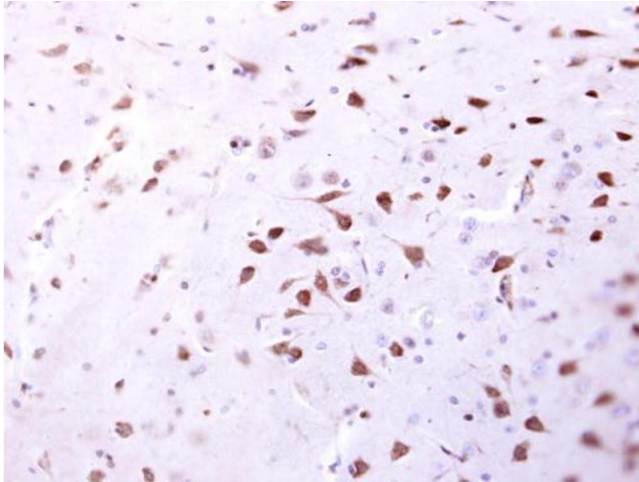
Precaution of Use: This product contains Thimerosal (Merthiolate): a POISONOUS AND HAZARDOUS SUBSTANCE which should be handled by trained staff only.

Storage: 4 °C, -20 °C

Handling

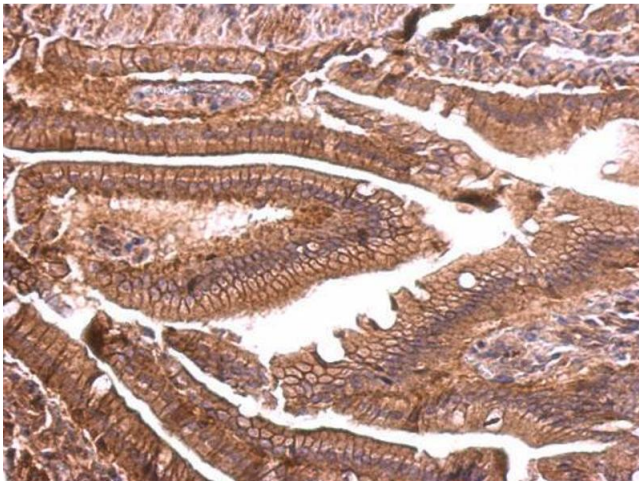
Storage Comment: Store as concentrated solution. Centrifuge briefly prior to opening vial. For short-term storage (1-2 weeks), store at 4°C. For long-term storage, aliquot and store at -20°C or below. Avoid multiple freeze-thaw cycles.

Images



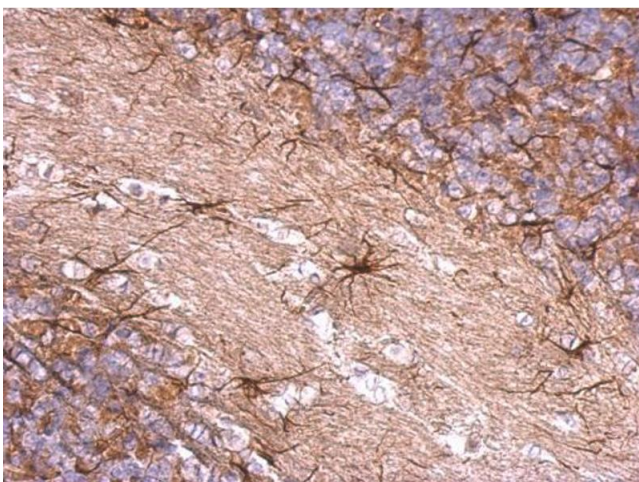
Immunohistochemistry

Image 1. IHC-P Image ENSA antibody detects ENSA protein at cytosol on mouse fore brain by immunohistochemical analysis. Sample: Paraffin-embedded mouse fore brain. ENSA antibody , dilution: 1:500.



Immunohistochemistry

Image 2. IHC-P Image ENSA antibody detects ENSA protein at membrane on mouse intestine by immunohistochemical analysis. Sample: Paraffin-embedded mouse intestine. ENSA antibody , dilution: 1:500.



Immunohistochemistry

Image 3. IHC-P Image ENSA antibody detects ENSA protein at cytosol on rat hind brain by immunohistochemical analysis. Sample: Paraffin-embedded rat hind brain. ENSA antibody , dilution: 1:500.

Please check the [product details page](#) for more images. Overall 5 images are available for ABIN2855066.