

Datasheet for ABIN2855076

anti-KLF4 antibody

4 Images

[Go to Product page](#)

Overview

Quantity:	100 µL
Target:	KLF4
Reactivity:	Human
Host:	Rabbit
Clonality:	Polyclonal
Conjugate:	This KLF4 antibody is un-conjugated
Application:	Western Blotting (WB), Immunofluorescence (IF), Immunocytochemistry (ICC), Immunohistochemistry (Paraffin-embedded Sections) (IHC (p))

Product Details

Immunogen:	Recombinant protein encompassing a sequence within the center region of human KLF4. The exact sequence is proprietary.
Isotype:	IgG
Cross-Reactivity:	Human, Mouse
Characteristics:	Rabbit Polyclonal antibody to KLF4 (Kruppel-like factor 4 (gut)) KLF4 antibody
Purification:	Purified by antigen-affinity chromatography.
Grade:	KO Validated

Target Details

Target:	KLF4
---------	------

Target Details

Alternative Name:	Kruppel like factor 4 (KLF4 Products)
Background:	<p>Transcription factor which acts as both an activator and repressor. Binds the CACCC core sequence. Binds to multiple sites in the 5'-flanking region of its own gene and can activate its own transcription. Required for establishing the barrier function of the skin and for postnatal maturation and maintenance of the ocular surface. Involved in the differentiation of epithelial cells and may also function in skeletal and kidney development.</p> <p>Cellular Localization: Nucleus</p>
Molecular Weight:	55 kDa
Gene ID:	9314
UniProt:	O43474
Pathways:	Peptide Hormone Metabolism , Stem Cell Maintenance

Application Details

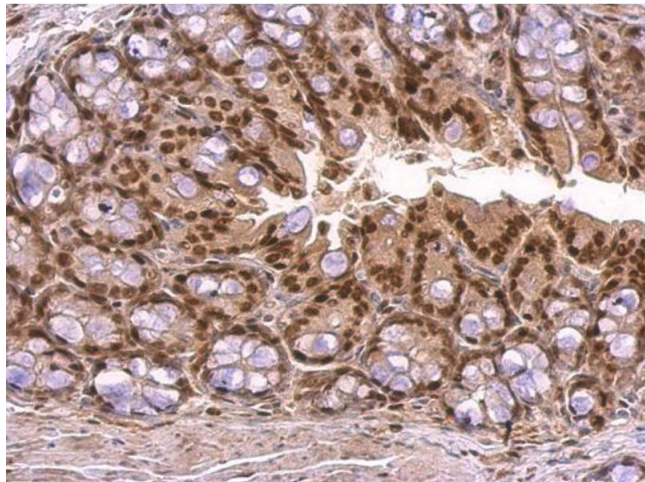
Application Notes:	WB: 1:5000-1:20000. ICC/IF: 1:100-1:1000. IHC-P: 1:100-1:1000. Optimal dilutions/concentrations should be determined by the researcher. Not tested in other applications.
Comment:	<p>Positive Control: HeLa , KLF4-transfected 293T</p> <p>Validation: KO/KD, Overexpression</p>
Restrictions:	For Research Use only

Handling

Format:	Liquid
Concentration:	1 mg/mL
Buffer:	1XPBS (pH 7), 20 % Glycerol, 0.01 % Thimerosal
Preservative:	Thimerosal (Merthiolate)
Precaution of Use:	This product contains Thimerosal (Merthiolate): a POISONOUS AND HAZARDOUS SUBSTANCE which should be handled by trained staff only.
Storage:	4 °C,-20 °C
Storage Comment:	Store as concentrated solution. Centrifuge briefly prior to opening vial. For short-term storage

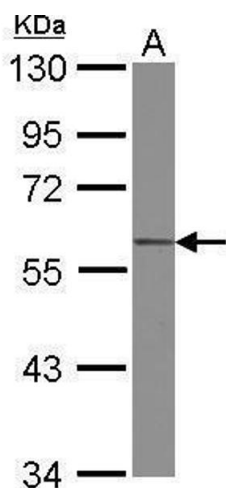
(1-2 weeks), store at 4°C. For long-term storage, aliquot and store at -20°C or below. Avoid multiple freeze-thaw cycles.

Images



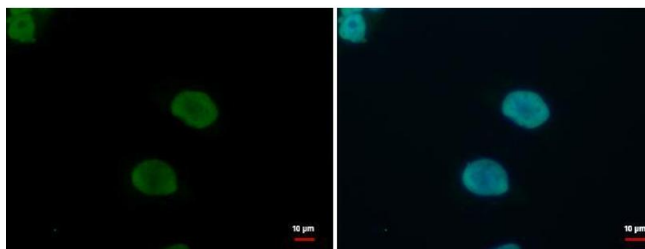
Immunohistochemistry

Image 1. IHC-P Image KLF4 antibody detects KLF4 protein at nucleus on mouse colon by immunohistochemical analysis. Sample: Paraffin-embedded mouse colon. KLF4 antibody, dilution: 1:500.



Western Blotting

Image 2. WB Image Sample (30 ug of whole cell lysate) A: HeLa 10% SDS PAGE antibody diluted at 1:500



Immunofluorescence

Image 3. ICC/IF Image KLF4 antibody detects KLF4 protein at nucleus by immunofluorescent analysis. Sample: HeLa cells were fixed in 4% paraformaldehyde/PBS for 15 min. Green: KLF4 protein stained by KLF4 antibody, diluted at 1:500. Blue: Hoechst 33342 staining.

Please check the [product details page](#) for more images. Overall 4 images are available for ABIN2855076.