

Datasheet for ABIN2855083

**anti-Septin 7 antibody****2** Images[Go to Product page](#)

## Overview

Quantity:	100 µL
Target:	Septin 7 (SEPT7)
Reactivity:	Human
Host:	Rabbit
Clonality:	Polyclonal
Conjugate:	This Septin 7 antibody is un-conjugated
Application:	Western Blotting (WB), Immunohistochemistry (Paraffin-embedded Sections) (IHC (p)), Immunohistochemistry (Whole Mount) (IHC (wm))

## Product Details

Immunogen:	Recombinant protein encompassing a sequence within the center region of human SEPT7. The exact sequence is proprietary.
Isotype:	IgG
Cross-Reactivity:	Human, Zebrafish (Danio rerio)
Characteristics:	Rabbit Polyclonal antibody to SEPT7 (septin 7) SEPT7 antibody [N3C3]
Purification:	Purified by antigen-affinity chromatography.

## Target Details

Target:	Septin 7 (SEPT7)
Alternative Name:	septin 7 ( <a href="#">SEPT7 Products</a> )

## Target Details

**Background:** This gene encodes a protein that is highly similar to the CDC10 protein of *Saccharomyces cerevisiae*. The protein also shares similarity with Diff 6 of *Drosophila* and with H5 of mouse. Each of these similar proteins, including the yeast CDC10, contains a GTP-binding motif. The yeast CDC10 protein is a structural component of the 10 nm filament which lies inside the cytoplasmic membrane and is essential for cytokinesis. Although the exact function of this gene has not yet been determined, its high similarity to yeast CDC10 and the high conservative nature of eukaryotic cell cycle machinery suggest a similar role to that of its yeast counterpart. Alternative splicing results in two transcript variants encoding different isoforms.

Cellular Localization: Cytoplasm , Kinetochore , Spindle

**Molecular Weight:** 51 kDa

**Gene ID:** 989

**UniProt:** [Q16181](#)

## Application Details

**Application Notes:** WB: 1:500-1:3000. IHC-P: 1:100-1:1000. Optimal dilutions/concentrations should be determined by the researcher. Not tested in other applications.

**Comment:** Positive Control: HeLaS3

**Restrictions:** For Research Use only

## Handling

**Format:** Liquid

**Concentration:** 1.02 mg/mL

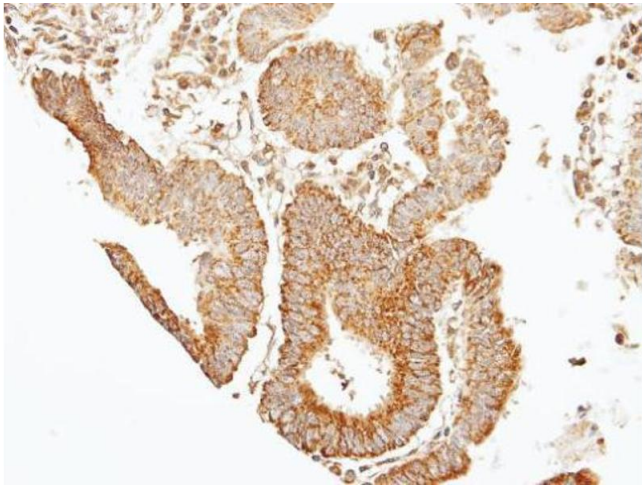
**Buffer:** 0.1M Tris-Glycine ( pH 7), 10 % Glycerol, 0.01 % Thimerosal

**Preservative:** Thimerosal (Merthiolate)

**Precaution of Use:** This product contains Thimerosal (Merthiolate): a POISONOUS AND HAZARDOUS SUBSTANCE which should be handled by trained staff only.

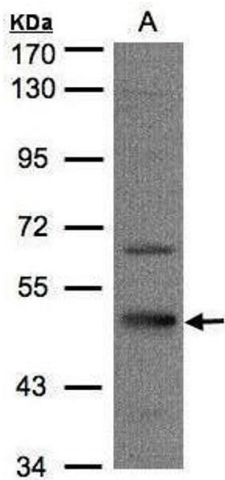
**Storage:** 4 °C, -20 °C

**Storage Comment:** Store as concentrated solution. Centrifuge briefly prior to opening vial. For short-term storage (1-2 weeks), store at 4°C. For long-term storage, aliquot and store at -20°C or below. Avoid multiple freeze-thaw cycles.



### Immunohistochemistry

**Image 1.** IHC-P Image Immunohistochemical analysis of paraffin-embedded human gastric cancer, using 39331, antibody at 1:100 dilution.



### Western Blotting

**Image 2.** WB Image Sample(30 µg of whole cell lysate) A:HeLa S3, 7.5% SDS PAGE antibody diluted at 1:1000