

Datasheet for ABIN2855085
anti-MSI1 antibody (Center)

5 Images

[Go to Product page](#)

Overview

Quantity:	100 µL
Target:	MSI1
Binding Specificity:	Center
Reactivity:	Human, Mouse
Host:	Rabbit
Clonality:	Polyclonal
Conjugate:	This MSI1 antibody is un-conjugated
Application:	Western Blotting (WB), Immunofluorescence (IF), Immunocytochemistry (ICC), Immunohistochemistry (Frozen Sections) (IHC (fro))

Product Details

Immunogen:	Recombinant protein encompassing a sequence within the center region of human MSI1. The exact sequence is proprietary.
Isotype:	IgG
Cross-Reactivity:	Rat (Rattus), Cow (Bovine)
Cross-Reactivity (Details):	Rat (100 %), Bovine (100 %)
Characteristics:	Rabbit Polyclonal antibody to MSI1 (musashi homolog 1 (Drosophila)) MSI1 antibody [N3C3]
Purification:	Purified by antigen-affinity chromatography.

Target Details

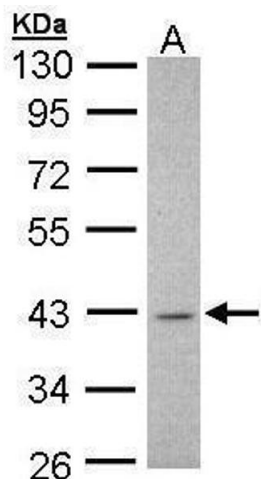
Target:	MSI1
Alternative Name:	MSI1 (MSI1 Products)
Background:	This gene encodes a protein containing two conserved tandem RNA recognition motifs. Similar proteins in other species function as RNA-binding proteins and play central roles in posttranscriptional gene regulation. Expression of this gene has been correlated with the grade of the malignancy and proliferative activity in gliomas and melanomas. A pseudogene for this gene is located on chromosome 11q13.
Molecular Weight:	39 kDa
Gene ID:	4440
Pathways:	Stem Cell Maintenance

Application Details

Application Notes:	Suggested dilution Reference ICC/IF 1:100-1:1000* IHC (Frozen sections) 1:100-1:1000* Western blot 1:500-1:3000* Not tested in other applications. *Optimal dilutions/concentrations should be determined by the researcher.Suggested dilutionReferenceICC/IF1:100-1:1000* IHC (Frozen sections)1:100-1:1000* Western blot1:500-1:3000*
Comment:	Positive Control: 293T , H1299 , HepG2
Restrictions:	For Research Use only

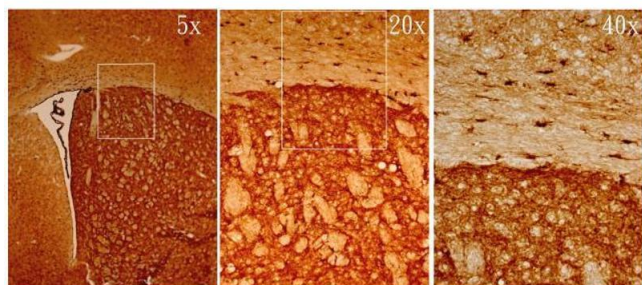
Handling

Format:	Liquid
Concentration:	0.69 mg/mL
Buffer:	0.1M Tris, 0.1M Glycine, 10 % Glycerol (pH 7). 0.01 % Thimerosal was added as a preservative.
Preservative:	Thimerosal (Merthiolate)
Precaution of Use:	This product contains Thimerosal (Merthiolate): a POISONOUS AND HAZARDOUS SUBSTANCE which should be handled by trained staff only.
Storage:	-20 °C
Storage Comment:	Keep as concentrated solution. Aliquot and store at -20°C or below. Avoid multiple freeze-thaw cycles.



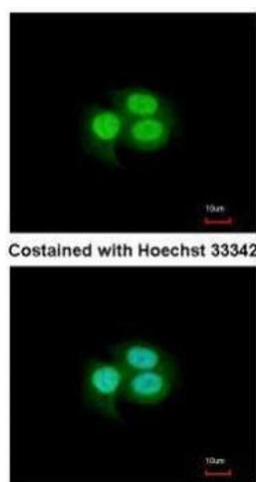
Western Blotting

Image 1. WB Image Sample (30 ug of whole cell lysate) A: H1299 10% SDS PAGE antibody diluted at 1:1000



Immunohistochemistry

Image 2. IHC-Fr Image MSI1 antibody [N3C3] detects MSI1 protein on adult mouse brain by immunohistochemical analysis. Sample: Frozen section of adult mouse brain. MSI1 antibody [N3C3], diluted at 1:500.



Immunofluorescence

Image 3. ICC/IF Image Immunofluorescence analysis of paraformaldehyde-fixed A549, using MSI1, antibody at 1:200 dilution.

Please check the [product details page](#) for more images. Overall 5 images are available for ABIN2855085.