

Datasheet for ABIN2855086

anti-CRABP2 antibody**3** Images[Go to Product page](#)

Overview

Quantity:	100 µL
Target:	CRABP2
Reactivity:	Human
Host:	Rabbit
Clonality:	Polyclonal
Conjugate:	This CRABP2 antibody is un-conjugated
Application:	Western Blotting (WB), Immunofluorescence (IF), Immunohistochemistry (Paraffin-embedded Sections) (IHC (p)), Immunocytochemistry (ICC)

Product Details

Immunogen:	Recombinant protein encompassing a sequence within the center region of human CRABP2. The exact sequence is proprietary.
Isotype:	IgG
Cross-Reactivity:	Human, Mouse, Rat
Characteristics:	Rabbit Polyclonal antibody to CRABP2 (cellular retinoic acid binding protein 2) CRABP2 antibody [N1C3]
Purification:	Purified by antigen-affinity chromatography.

Target Details

Target:	CRABP2
Alternative Name:	cellular retinoic acid binding protein 2 (CRABP2 Products)

Target Details

Background: A number of specific carrier proteins for members of the vitamin A family have been discovered. Cellular retinoic acid binding proteins (CRABP) are low molecular weight proteins whose precise function remains unknown. The inducibility of the CRABP2 gene suggests that this isoform is important in retinoic acid-mediated regulation of human skin growth and differentiation. It has been postulated that the CRABP2 gene is transcriptionally regulated by a newly synthesized regulatory protein.

Molecular Weight: 16 kDa

Gene ID: 1382

UniProt: [P29373](#)

Application Details

Application Notes: WB: 1:500-1:3000. ICC/IF: 1:100-1:1000. IHC-P: 1:100-1:1000. Optimal dilutions/concentrations should be determined by the researcher. Not tested in other applications.

Comment: Positive Control: HepG2 , mouse brain , mouse fetal brain , rat brain

Restrictions: For Research Use only

Handling

Format: Liquid

Concentration: 1 mg/mL

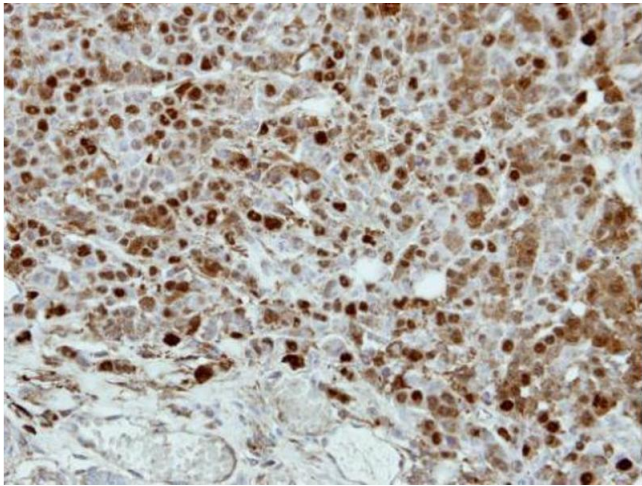
Buffer: 1XPBS (pH 7), 1 % BSA, 20 % Glycerol, 0.01 % Thimerosal

Preservative: Thimerosal (Merthiolate)

Precaution of Use: This product contains Thimerosal (Merthiolate): a POISONOUS AND HAZARDOUS SUBSTANCE which should be handled by trained staff only.

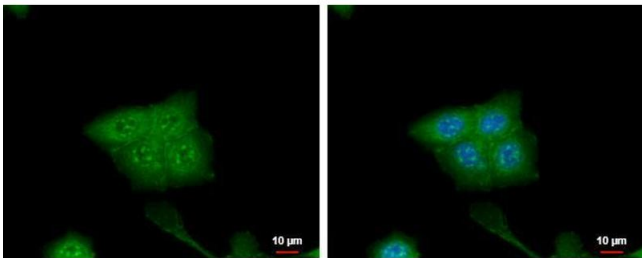
Storage: 4 °C, -20 °C

Storage Comment: Store as concentrated solution. Centrifuge briefly prior to opening vial. For short-term storage (1-2 weeks), store at 4°C. For long-term storage, aliquot and store at -20°C or below. Avoid multiple freeze-thaw cycles.



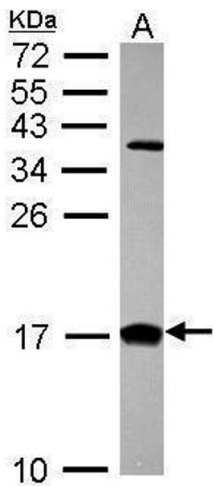
Immunohistochemistry

Image 1. IHC-P Image Immunohistochemical analysis of paraffin-embedded MDAMB468 xenograft, using CRABP2, antibody at 1:500 dilution.



Immunofluorescence

Image 2. ICC/IF Image CRABP2 antibody [N1C3] detects CRABP2 protein at cytoplasm and nucleus by immunofluorescent analysis. Sample: HCT116 cells were fixed in 4% paraformaldehyde at RT for 15 min. Green: CRABP2 protein stained by CRABP2 antibody [N1C3] , diluted at 1:500. Blue: Hoechst 33342 staining.



Western Blotting

Image 3. WB Image Sample (30 ug of whole cell lysate) A: Hep G2 , 15% SDS PAGE diluted at 1:1000