

Datasheet for ABIN2855087
anti-ENO2/NSE antibody



[Go to Product page](#)

3 Images

Overview

Quantity:	100 µL
Target:	ENO2/NSE (ENO2)
Reactivity:	Human
Host:	Rabbit
Clonality:	Polyclonal
Conjugate:	This ENO2/NSE antibody is un-conjugated
Application:	Western Blotting (WB), Immunohistochemistry (Paraffin-embedded Sections) (IHC (p)), Immunohistochemistry (Frozen Sections) (IHC (fro))

Product Details

Immunogen:	Recombinant protein encompassing a sequence within the center region of human NSE. The exact sequence is proprietary.
Isotype:	IgG
Specificity:	This antibody was raised against human NSE (ENO2) protein, but it may cross react other family members based on sequence homology.
Cross-Reactivity:	Human, Mouse, Rat
Characteristics:	Rabbit Polyclonal antibody to NSE NSE antibody [N1C1]
Purification:	Purified by antigen-affinity chromatography.

Target Details

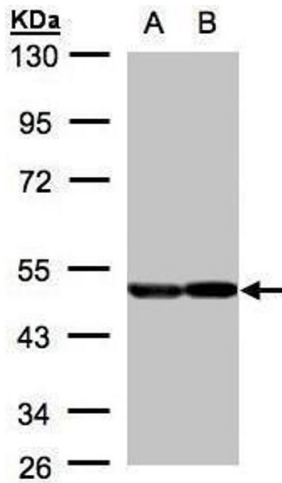
Target:	ENO2/NSE (ENO2)
Alternative Name:	enolase 2 (ENO2 Products)
Background:	<p>This gene encodes one of the three enolase isoenzymes found in mammals. This isoenzyme, a homodimer, is found in mature neurons and cells of neuronal origin. A switch from alpha enolase to gamma enolase occurs in neural tissue during development in rats and primates.</p> <p>Cellular Localization: Cytoplasm (By similarity) , Cell membrane (By similarity)</p>
Molecular Weight:	47 kDa
Gene ID:	2026
UniProt:	P09104

Application Details

Application Notes:	WB: 1:1000-1:10000. IHC-P: 1:100-1:1000. IHC-Fr: 1:100-1:1000. Optimal dilutions/concentrations should be determined by the researcher. Not tested in other applications.
Comment:	Positive Control: Mouse brain Validation: Orthogonal
Restrictions:	For Research Use only

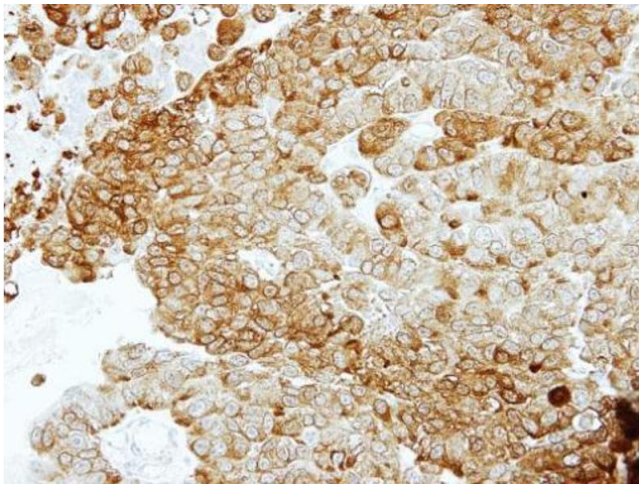
Handling

Format:	Liquid
Concentration:	0.13 mg/mL
Buffer:	1XPBS (pH 7), 1 % BSA, 20 % Glycerol, 0.025 % ProClin 300
Preservative:	ProClin
Precaution of Use:	This product contains ProClin: a POISONOUS AND HAZARDOUS SUBSTANCE which should be handled by trained staff only.
Storage:	4 °C,-20 °C
Storage Comment:	Store as concentrated solution. Centrifuge briefly prior to opening vial. For short-term storage (1-2 weeks), store at 4°C. For long-term storage, aliquot and store at -20°C or below. Avoid multiple freeze-thaw cycles.



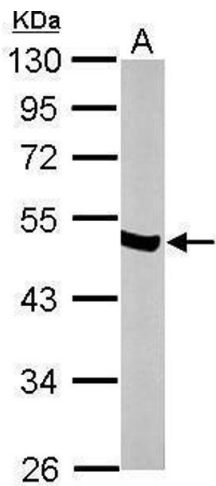
Western Blotting

Image 1. WB Image Sample(30 μ g of whole cell lysate)
A:A431, B:H1299 10% SDS PAGE antibody diluted at 1:2000



Immunohistochemistry

Image 2. IHC-P Image Immunohistochemical analysis of paraffin-embedded PC14 xenograft, using ENO2, antibody at 1:100 dilution.



Western Blotting

Image 3. WB Image Sample (50 μ g of whole cell lysate) A:
mouse brain 10% SDS PAGE antibody diluted at 1:10000