

Datasheet for ABIN2855094  
**anti-alpha Adducin antibody**



[Go to Product page](#)

4 Images

## Overview

Quantity:	100 µL
Target:	alpha Adducin (ADD1)
Reactivity:	Human
Host:	Rabbit
Clonality:	Polyclonal
Conjugate:	This alpha Adducin antibody is un-conjugated
Application:	Western Blotting (WB), Immunofluorescence (IF), Immunohistochemistry (Paraffin-embedded Sections) (IHC (p)), Immunocytochemistry (ICC)

## Product Details

Immunogen:	Recombinant protein encompassing a sequence within the center region of human alpha Adducin. The exact sequence is proprietary.
Isotype:	IgG
Cross-Reactivity:	Human, Mouse
Characteristics:	Rabbit Polyclonal antibody to alpha Adducin (adducin 1 (alpha)) alpha Adducin antibody
Purification:	Purified by antigen-affinity chromatography.

## Target Details

Target:	alpha Adducin (ADD1)
Alternative Name:	adducin 1 ( <a href="#">ADD1 Products</a> )

## Target Details

**Background:** Adducins are a family of cytoskeleton proteins encoded by three genes (alpha, beta, gamma). Adducin is a heterodimeric protein that consists of related subunits, which are produced from distinct genes but share a similar structure. Alpha- and beta-adducin include a protease-resistant N-terminal region and a protease-sensitive, hydrophilic C-terminal region. Alpha- and gamma-adducins are ubiquitously expressed. In contrast, beta-adducin is expressed at high levels in brain and hematopoietic tissues. Adducin binds with high affinity to Ca(2+)/calmodulin and is a substrate for protein kinases A and C. Alternative splicing results in multiple variants encoding distinct isoforms, however, not all variants have been fully described.

Cellular Localization: Cytoplasm , cytoskeleton , Cell membrane

**Molecular Weight:** 81 kDa

**Gene ID:** 118

**UniProt:** [P35611](#)

**Pathways:** [Negative Regulation of Hormone Secretion](#), [Regulation of Actin Filament Polymerization](#), [Regulation of Lipid Metabolism by PPARalpha](#), [ER-Nucleus Signaling](#)

## Application Details

**Application Notes:** WB: 1:500-1:3000. ICC/IF: 1:100-1:1000. IHC-P: 1:100-1:1000. Optimal dilutions/concentrations should be determined by the researcher. Not tested in other applications.

**Comment:** Positive Control: Jurkat , Raji

**Restrictions:** For Research Use only

## Handling

**Format:** Liquid

**Concentration:** 0.81 mg/mL

**Buffer:** 0.1M Tris-Glycine ( pH 7), 20 % Glycerol, 0.01 % Thimerosal

**Preservative:** Thimerosal (Merthiolate)

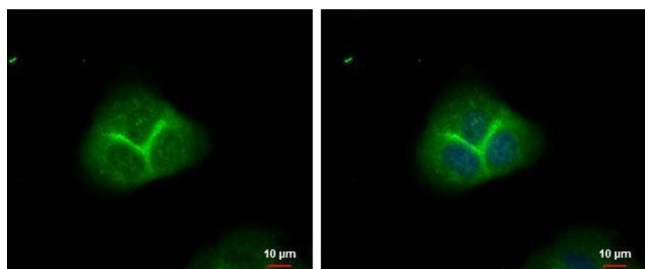
**Precaution of Use:** This product contains Thimerosal (Merthiolate): a POISONOUS AND HAZARDOUS SUBSTANCE which should be handled by trained staff only.

**Storage:** 4 °C,-20 °C

**Storage Comment:** Store as concentrated solution. Centrifuge briefly prior to opening vial. For short-term storage

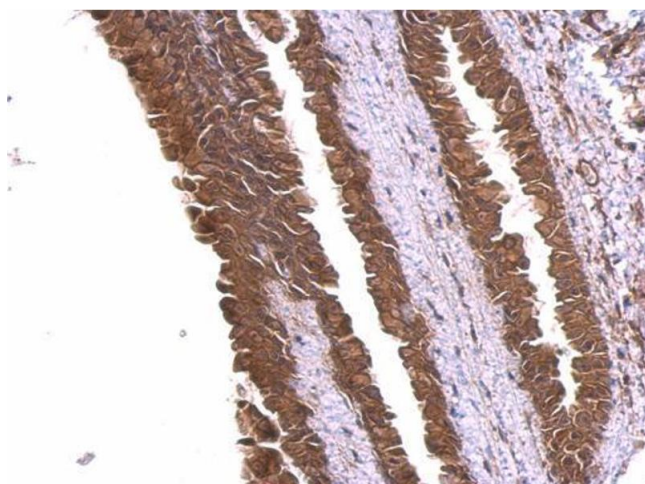
(1-2 weeks), store at 4°C. For long-term storage, aliquot and store at -20°C or below. Avoid multiple freeze-thaw cycles.

## Images



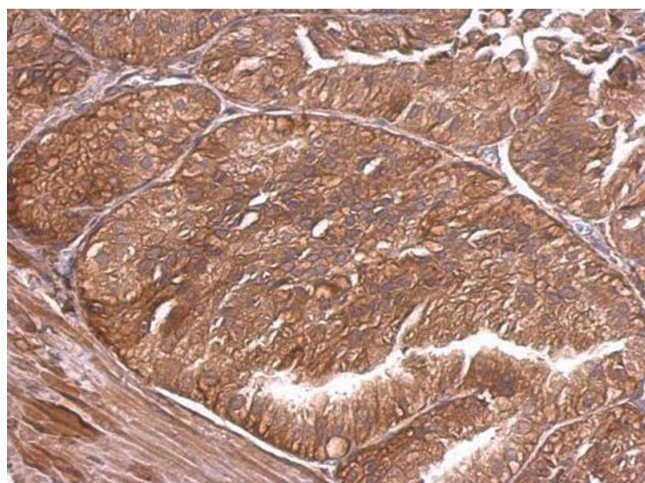
### Immunofluorescence

**Image 1.** ICC/IF Image alpha Adducin antibody detects alpha Adducin protein at membrane by immunofluorescent analysis. Sample: A431 cells were fixed in ice-cold MeOH for 5 min. Green: alpha Adducin protein stained by alpha Adducin antibody, diluted at 1:200. Blue: Hoechst 33342 staining.



### Immunohistochemistry

**Image 2.** IHC-P Image alpha Adducin antibody detects alpha Adducin protein at membrane and cytosol on mouse esophagus by immunohistochemical analysis. Sample: Paraffin-embedded mouse esophagus. alpha Adducin antibody, dilution: 1:500.



### Immunohistochemistry

**Image 3.** IHC-P Image alpha Adducin antibody detects alpha Adducin protein at membrane and cytosol on mouse prostate by immunohistochemical analysis. Sample: Paraffin-embedded mouse prostate. alpha Adducin antibody, dilution: 1:500.

Please check the [product details page](#) for more images. Overall 4 images are available for ABIN2855094.