

Datasheet for ABIN2855096

anti-LEFTY2 antibody**2** Images[Go to Product page](#)

Overview

Quantity:	100 µL
Target:	LEFTY2
Reactivity:	Human
Host:	Rabbit
Clonality:	Polyclonal
Conjugate:	This LEFTY2 antibody is un-conjugated
Application:	Western Blotting (WB), Immunohistochemistry (Paraffin-embedded Sections) (IHC (p))

Product Details

Immunogen:	Recombinant protein encompassing a sequence within the center region of human LEFTY2. The exact sequence is proprietary.
Isotype:	IgG
Cross-Reactivity:	Human
Characteristics:	Rabbit Polyclonal antibody to LEFTY2 (left-right determination factor 2) LEFTY2 antibody
Purification:	Purified by antigen-affinity chromatography.

Target Details

Target:	LEFTY2
Alternative Name:	left-right determination factor 2 (LEFTY2 Products)

Target Details

Background: This gene encodes a member of the TGF-beta family of proteins. The encoded protein is secreted and plays a role in left-right asymmetry determination of organ systems during development. The protein may also play a role in endometrial bleeding. Mutations in this gene have been associated with left-right axis malformations, particularly in the heart and lungs. Some types of infertility have been associated with dysregulated expression of this gene in the endometrium. Alternative processing of this protein can yield three different products. This gene is closely linked to both a related family member and a related pseudogene.

Cellular Localization: Secreted

Molecular Weight: 41 kDa

Gene ID: 7044

UniProt: [O00292](#)

Application Details

Application Notes: WB: 1:500-1:3000. IHC-P: 1:100-1:1000. Optimal dilutions/concentrations should be determined by the researcher. Not tested in other applications.

Comment: Positive Control: A431

Restrictions: For Research Use only

Handling

Format: Liquid

Concentration: 1.01 mg/mL

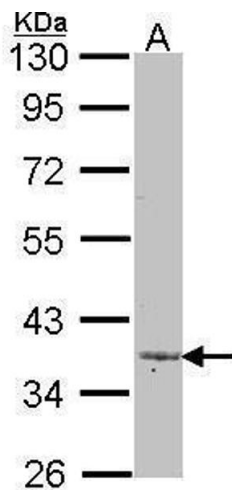
Buffer: 0.1M Tris-Glycine (pH 7), 10 % Glycerol, 0.01 % Thimerosal

Preservative: Thimerosal (Merthiolate)

Precaution of Use: This product contains Thimerosal (Merthiolate): a POISONOUS AND HAZARDOUS SUBSTANCE which should be handled by trained staff only.

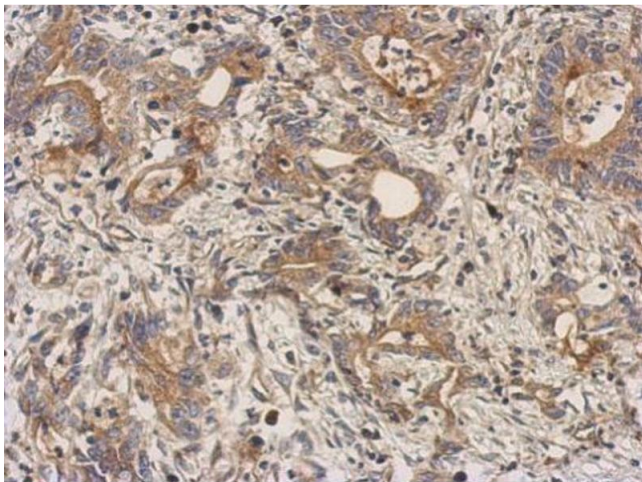
Storage: 4 °C,-20 °C

Storage Comment: Store as concentrated solution. Centrifuge briefly prior to opening vial. For short-term storage (1-2 weeks), store at 4°C. For long-term storage, aliquot and store at -20°C or below. Avoid multiple freeze-thaw cycles.



Western Blotting

Image 1. WB Image Sample (30 ug of whole cell lysate) A: A431 , 10% SDS PAGE antibody diluted at 1:1000



Immunohistochemistry

Image 2. IHC-P Image Immunohistochemical analysis of paraffin-embedded human colon carcinoma, using LEFTY2, antibody at 1:500 dilution.