

Datasheet for ABIN2855097

**anti-PAX8 antibody**

8 Images

2 Publications

[Go to Product page](#)

## Overview

Quantity:	100 µL
Target:	PAX8
Reactivity:	Human
Host:	Rabbit
Clonality:	Polyclonal
Conjugate:	This PAX8 antibody is un-conjugated
Application:	Western Blotting (WB), Immunohistochemistry (IHC), Immunofluorescence (IF), Immunohistochemistry (Paraffin-embedded Sections) (IHC (p)), Immunoprecipitation (IP), Immunocytochemistry (ICC), Chromatin Immunoprecipitation (ChIP)

## Product Details

Immunogen:	Recombinant protein encompassing a sequence within the center region of human PAX8. The exact sequence is proprietary.
Isotype:	IgG
Cross-Reactivity:	Dog, Human, Mouse, Rat
Characteristics:	Rabbit Polyclonal antibody to PAX8 (paired box 8) PAX8 antibody
Purification:	Purified by antigen-affinity chromatography.
Grade:	KO Validated

## Target Details

Target:	PAX8
Alternative Name:	paired box 8 ( <a href="#">PAX8 Products</a> )
Background:	<p>This gene encodes a member of the paired box (PAX) family of transcription factors. Members of this gene family typically encode proteins that contain a paired box domain, an octapeptide, and a paired-type homeodomain. This nuclear protein is involved in thyroid follicular development and expression of thyroid-specific genes. Mutations in this gene have been associated with thyroid dysgenesis, thyroid follicular carcinomas and atypical follicular thyroid adenomas. Alternately spliced transcript variants encoding different isoforms have been described.</p> <p>Cellular Localization: Nucleus</p>
Molecular Weight:	48 kDa
Gene ID:	7849
UniProt:	<a href="#">Q06710</a>
Pathways:	<a href="#">Thyroid Hormone Synthesis</a> , <a href="#">Regulation of Hormone Metabolic Process</a> , <a href="#">Stem Cell Maintenance</a> , <a href="#">Tube Formation</a>

## Application Details

Application Notes:	WB: 1:5000-1:20000. ICC/IF: 1:100-1:1000. IHC-P: 1:100-1:1000. IP: 1:500-1:1000. Optimal dilutions/concentrations should be determined by the researcher. Not tested in other applications.
Comment:	Positive Control: 293T nuclear extract , DDDDK-tagged PAX8-transfected 293T Validation: KO/KD, Orthogonal, Overexpression
Restrictions:	For Research Use only

## Handling

Format:	Liquid
Concentration:	0.87 mg/mL
Buffer:	1XPBS ( pH 7), 20 % Glycerol, 0.025 % ProClin 300
Preservative:	ProClin
Precaution of Use:	This product contains ProClin: a POISONOUS AND HAZARDOUS SUBSTANCE which should be

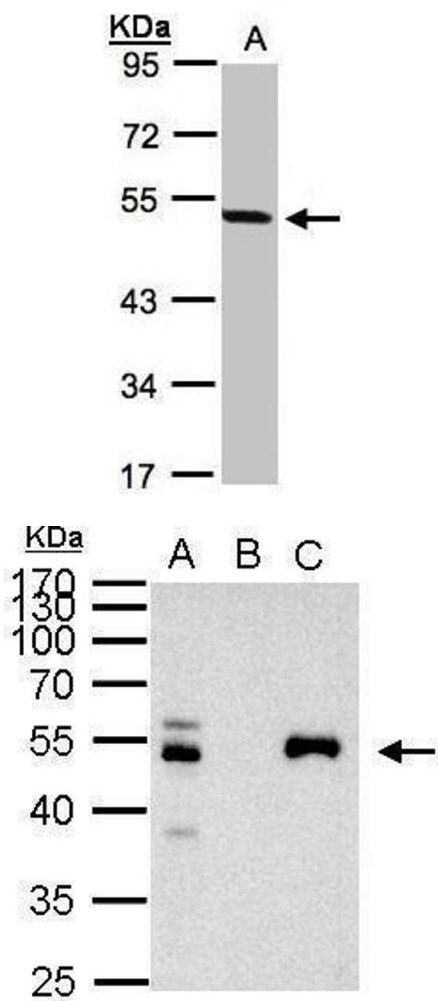
Handling

	handled by trained staff only.
Storage:	4 °C,-20 °C
Storage Comment:	Store as concentrated solution. Centrifuge briefly prior to opening vial. For short-term storage (1-2 weeks), store at 4°C. For long-term storage, aliquot and store at -20°C or below. Avoid multiple freeze-thaw cycles.

Publications

Product cited in:	Rodriguez-Gil, Hu, Greer: "Dishevelled proteins are associated with olfactory sensory neuron presynaptic terminals." in: <b>PLoS ONE</b> , Vol. 8, Issue 2, pp. e56561, (2013) ( <a href="#">PubMed</a> ).
-------------------	--

Images

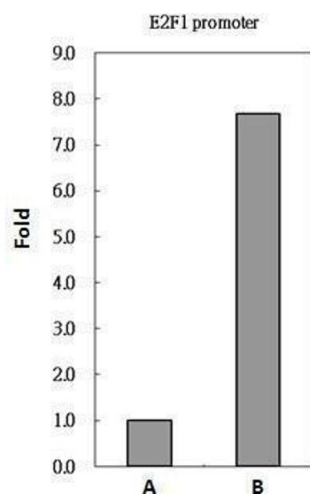


Western Blotting

**Image 1.** WB Image Sample(30 ug whole cell lysate) A:293T  
10% SDS PAGE antibody diluted at 1:1000

Immunoprecipitation

**Image 2.** IP Image PAX8 antibody immunoprecipitates  
PAX8 protein in IP experiments. IP Sample: 1000 µg 293T  
whole cell lysate/extract A. 40 µg 293T whole cell  
lysate/extract B. Control with 2 µg of preimmune rabbit IgG  
C. Immunoprecipitation of PAX8 protein by 2 µg of PAX8  
antibody , 10% SDS-PAGE The immunoprecipitated PAX8  
protein was detected by PAX8 antibody , diluted at 1:1000.  
EasyBlot anti-rabbit IgG was used as a secondary reagent.



### Chromatin Immunoprecipitation

**Image 3.** ChIP Image PAX8 antibody immunoprecipitates PAX8 protein-DNA in ChIP experiments. ChIP Sample: 293T whole cell lysate/extract A. 5 µg preimmune rabbit IgG B. 5 µg of PAX8 antibody , The precipitated DNA was detected by PCR with primer set targeting to E2F1 promoter.

Please check the [product details page](#) for more images. Overall 8 images are available for ABIN2855097.