

Datasheet for ABIN2855099
anti-alpha Adducin antibody



[Go to Product page](#)

4 Images

Overview

Quantity:	100 µL
Target:	alpha Adducin (ADD1)
Reactivity:	Human
Host:	Rabbit
Clonality:	Polyclonal
Conjugate:	This alpha Adducin antibody is un-conjugated
Application:	Western Blotting (WB), Immunofluorescence (IF), Immunohistochemistry (Paraffin-embedded Sections) (IHC (p)), Immunocytochemistry (ICC), Immunohistochemistry (Whole Mount) (IHC (wm))

Product Details

Immunogen:	Recombinant protein encompassing a sequence within the center region of human alpha Adducin. The exact sequence is proprietary.
Isotype:	IgG
Cross-Reactivity:	Human, Mouse, Zebrafish (Danio rerio)
Characteristics:	Rabbit Polyclonal antibody to alpha Adducin (adducin 1 (alpha)) alpha Adducin antibody
Purification:	Purified by antigen-affinity chromatography.

Target Details

Target:	alpha Adducin (ADD1)
---------	----------------------

Target Details

Alternative Name:	adducin 1 (ADD1 Products)
Background:	<p>Adducins are a family of cytoskeleton proteins encoded by three genes (alpha, beta, gamma). Adducin is a heterodimeric protein that consists of related subunits, which are produced from distinct genes but share a similar structure. Alpha- and beta-adducin include a protease-resistant N-terminal region and a protease-sensitive, hydrophilic C-terminal region. Alpha- and gamma-adducins are ubiquitously expressed. In contrast, beta-adducin is expressed at high levels in brain and hematopoietic tissues. Adducin binds with high affinity to Ca(2+)/calmodulin and is a substrate for protein kinases A and C. Alternative splicing results in multiple variants encoding distinct isoforms, however, not all variants have been fully described.</p> <p>Cellular Localization: Cytoplasm , cytoskeleton , Cell membrane</p>
Molecular Weight:	81 kDa
Gene ID:	118
UniProt:	P35611
Pathways:	Negative Regulation of Hormone Secretion , Regulation of Actin Filament Polymerization , Regulation of Lipid Metabolism by PPARalpha , ER-Nucleus Signaling

Application Details

Application Notes:	WB: 1:500-1:3000. ICC/IF: 1:100-1:1000. IHC-P: 1:100-1:1000. Optimal dilutions/concentrations should be determined by the researcher. Not tested in other applications.
Comment:	Positive Control: Jurkat
Restrictions:	For Research Use only

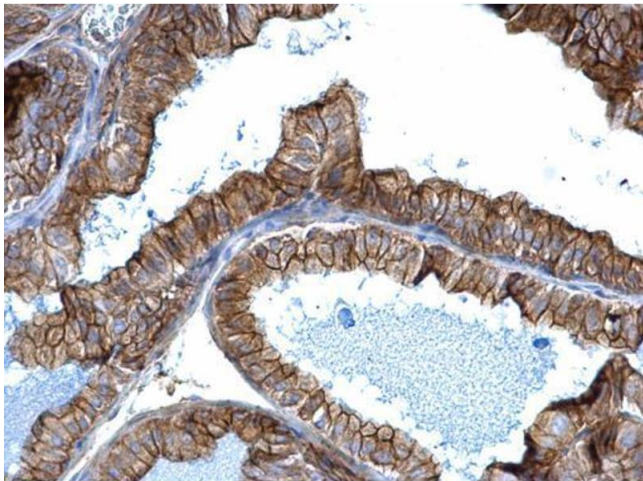
Handling

Format:	Liquid
Concentration:	1.02 mg/mL
Buffer:	1XPBS (pH 7), 1 % BSA, 20 % Glycerol, 0.01 % Thimerosal
Preservative:	Thimerosal (Merthiolate)
Precaution of Use:	This product contains Thimerosal (Merthiolate): a POISONOUS AND HAZARDOUS SUBSTANCE which should be handled by trained staff only.
Storage:	4 °C, -20 °C

Handling

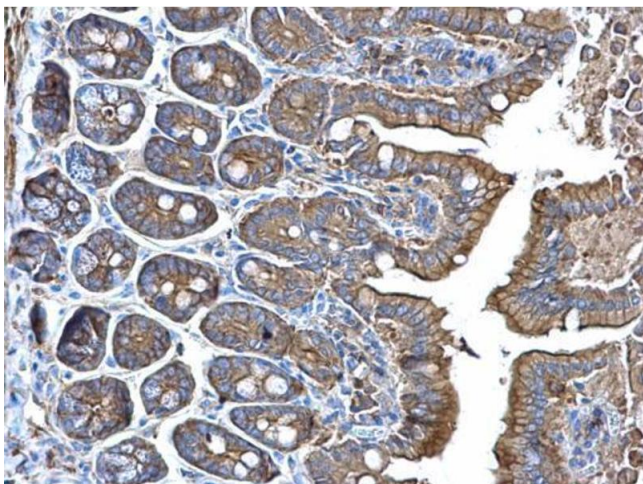
Storage Comment: Store as concentrated solution. Centrifuge briefly prior to opening vial. For short-term storage (1-2 weeks), store at 4°C. For long-term storage, aliquot and store at -20°C or below. Avoid multiple freeze-thaw cycles.

Images



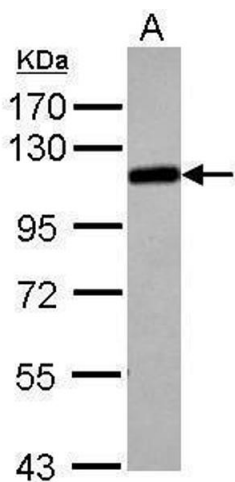
Immunohistochemistry

Image 1. IHC-P Image alpha Adducin antibody detects alpha Adducin protein at membrane on mouse prostate by immunohistochemical analysis. Sample: Paraffin-embedded mouse prostate. alpha Adducin antibody , dilution: 1:500.



Immunohistochemistry

Image 2. IHC-P Image alpha Adducin antibody detects alpha Adducin protein at membrane on mouse intestine by immunohistochemical analysis. Sample: Paraffin-embedded mouse intestine. alpha Adducin antibody , dilution: 1:500.



Western Blotting

Image 3. WB Image Sample (30 ug of whole cell lysate) A: Jurakt 7.5% SDS PAGE antibody diluted at 1:1000

Please check the [product details page](#) for more images. Overall 4 images are available for ABIN2855099.