

Datasheet for ABIN2855103
anti-Transgelin antibody

5 Images

[Go to Product page](#)

Overview

Quantity:	100 µL
Target:	Transgelin (TAGLN)
Reactivity:	Human
Host:	Rabbit
Clonality:	Polyclonal
Conjugate:	This Transgelin antibody is un-conjugated
Application:	Western Blotting (WB), Immunofluorescence (IF), Immunohistochemistry (Paraffin-embedded Sections) (IHC (p)), Immunocytochemistry (ICC), Immunoprecipitation (IP)

Product Details

Immunogen:	Recombinant protein encompassing a sequence within the center region of human Transgelin. The exact sequence is proprietary.
Isotype:	IgG
Cross-Reactivity:	Human, Mouse, Rat
Characteristics:	Rabbit Polyclonal antibody to Transgelin (transgelin) Transgelin antibody
Purification:	Purified by antigen-affinity chromatography.
Grade:	KO Validated

Target Details

Target:	Transgelin (TAGLN)
---------	--------------------

Target Details

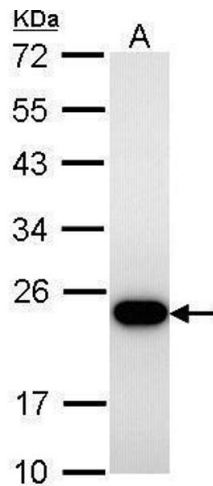
Alternative Name:	transgelin (TAGLN Products)
Background:	<p>The protein encoded by this gene is a transformation and shape-change sensitive actin cross-linking/gelling protein found in fibroblasts and smooth muscle. Its expression is down-regulated in many cell lines, and this down-regulation may be an early and sensitive marker for the onset of transformation. A functional role of this protein is unclear. Two transcript variants encoding the same protein have been found for this gene.</p> <p>Cellular Localization: Cytoplasm</p>
Molecular Weight:	23 kDa
Gene ID:	6876
UniProt:	Q01995

Application Details

Application Notes:	WB: 1:500-1:10000. ICC/IF: 1:100-1:1000. IHC-P: 1:100-1:1000. IP: 1:100-1:500. Optimal dilutions/concentrations should be determined by the researcher. Not tested in other applications.
Comment:	Positive Control: C8D30 , Rat-2 , HeLa Validation: KO/KD
Restrictions:	For Research Use only

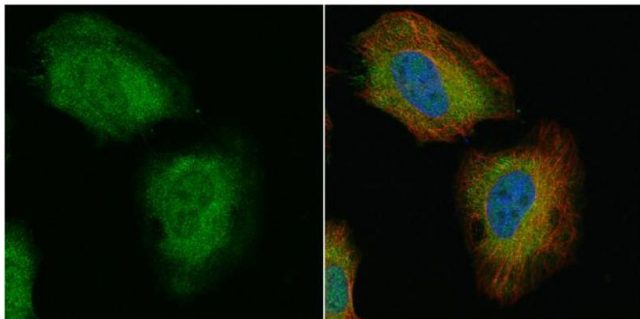
Handling

Format:	Liquid
Concentration:	1.22 mg/mL
Buffer:	1XPBS (pH 7), 20 % Glycerol, 0.025 % ProClin 300
Preservative:	ProClin
Precaution of Use:	This product contains ProClin: a POISONOUS AND HAZARDOUS SUBSTANCE which should be handled by trained staff only.
Storage:	4 °C, -20 °C
Storage Comment:	Store as concentrated solution. Centrifuge briefly prior to opening vial. For short-term storage (1-2 weeks), store at 4°C. For long-term storage, aliquot and store at -20°C or below. Avoid multiple freeze-thaw cycles.



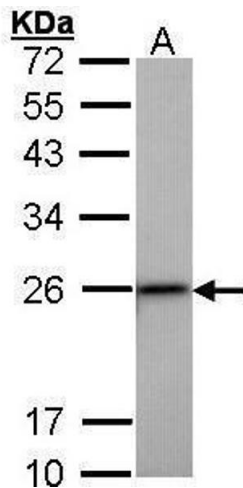
Western Blotting

Image 1. WB Image Transgelin antibody detects TAGLN protein by Western blot analysis. A. 30 µg C8D30 whole cell lysate/extract 12 % SDS-PAGE Transgelin antibody , dilution: 1:1000



Immunofluorescence

Image 2. ICC/IF Image Transgelin antibody detects Transgelin protein at cytoplasm and nucleus by immunofluorescent analysis. Sample: HeLa cells were fixed in 4% paraformaldehyde at RT for 15 min. Green: Transgelin protein stained by Transgelin antibody , diluted at 1:500. Red: alpha Tubulin, a cytoskeleton marker, stained by alpha Tubulin antibody [GT114] , diluted at 1:1000. Blue: Hoechst 33342 staining.



Western Blotting

Image 3. WB Image Sample (30 ug of whole cell lysate) A: Hep G2 , 12% SDS PAGE antibody diluted at 1:1000

Please check the [product details page](#) for more images. Overall 5 images are available for ABIN2855103.