

Datasheet for ABIN2855111

anti-Acetylcholinesterase antibody (C-Term)

5 Images

[Go to Product page](#)

Overview

Quantity:	100 µL
Target:	Acetylcholinesterase (AChE)
Binding Specificity:	C-Term
Reactivity:	Human, Mouse, Rat
Host:	Rabbit
Clonality:	Polyclonal
Conjugate:	This Acetylcholinesterase antibody is un-conjugated
Application:	Western Blotting (WB), Immunofluorescence (IF), Immunohistochemistry (Paraffin-embedded Sections) (IHC (p)), Immunocytochemistry (ICC)

Product Details

Immunogen:	Recombinant protein encompassing a sequence within the C-terminus region of human AChE. The exact sequence is proprietary.
Isotype:	IgG
Characteristics:	Rabbit Polyclonal antibody to AChE (acetylcholinesterase) AChE antibody
Purification:	Purified by antigen-affinity chromatography.

Target Details

Target:	Acetylcholinesterase (AChE)
Alternative Name:	AChE (AChE Products)

Target Details

Background:	<p>Acetylcholinesterase hydrolyzes the neurotransmitter, acetylcholine at neuromuscular junctions and brain cholinergic synapses, and thus terminates signal transmission. It is also found on the red blood cell membranes, where it constitutes the Yt blood group antigen.</p> <p>Acetylcholinesterase exists in multiple molecular forms which possess similar catalytic properties, but differ in their oligomeric assembly and mode of cell attachment to the cell surface. It is encoded by the single ACHE gene, and the structural diversity in the gene products arises from alternative mRNA splicing, and post-translational associations of catalytic and structural subunits. The major form of acetylcholinesterase found in brain, muscle and other tissues is the hydrophilic species, which forms disulfide-linked oligomers with collagenous, or lipid-containing structural subunits. The other, alternatively spliced form, expressed primarily in the erythroid tissues, differs at the C-terminal end, and contains a cleavable hydrophobic peptide with a GPI-anchor site. It associates with the membranes through the phosphoinositide (PI) moieties added post-translationally.</p> <p>Cellular Localization: Cell junction , synapse , Secreted , Cell membrane, Peripheral membrane protein , Isoform T: Nucleus , Isoform H: Cell membrane, Lipid-anchor , GPI-anchor, Extracellular side , Cell junction , synapse , Secreted , Cell membrane , Isoform T: Nucleus , Isof</p>
Molecular Weight:	68 kDa
Gene ID:	43
Pathways:	Skeletal Muscle Fiber Development

Application Details

Application Notes:	<p>Suggested dilution Reference ICC/IF 1:100-1:1000* IHC (Formalin-fixed paraffin-embedded sections) 1:100-1:1000* Western blot 1:500-1:3000* Not tested in other applications. *Optimal dilutions/concentrations should be determined by the researcher.Suggested dilutionReferenceICC/IF1:100-1:1000* IHC (Formalin-fixed paraffin-embedded sections)1:100-1:1000* Western blot1:500-1:3000*</p>
Comment:	Positive Control: Raji
Restrictions:	For Research Use only

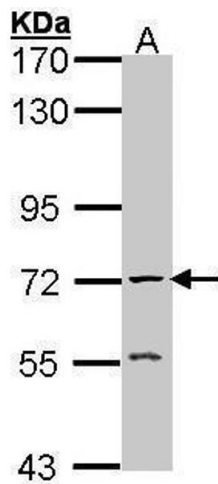
Handling

Format:	Liquid
Concentration:	1 mg/mL

Handling

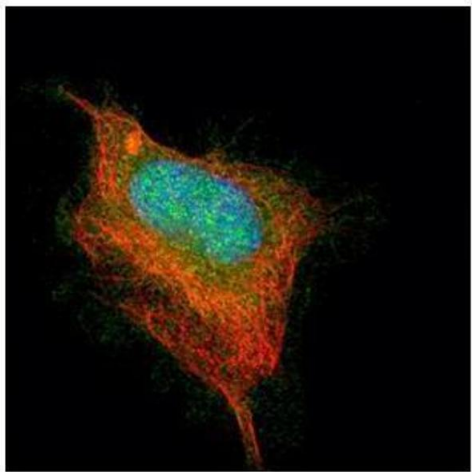
Buffer:	0.1M Tris, 0.1M Glycine, 10 % Glycerol (pH 7). 0.01 % Thimerosal was added as a preservative.
Preservative:	Thimerosal (Merthiolate)
Precaution of Use:	This product contains Thimerosal (Merthiolate): a POISONOUS AND HAZARDOUS SUBSTANCE which should be handled by trained staff only.
Storage:	-20 °C
Storage Comment:	Keep as concentrated solution. Aliquot and store at -20°C or below. Avoid multiple freeze-thaw cycles.

Images



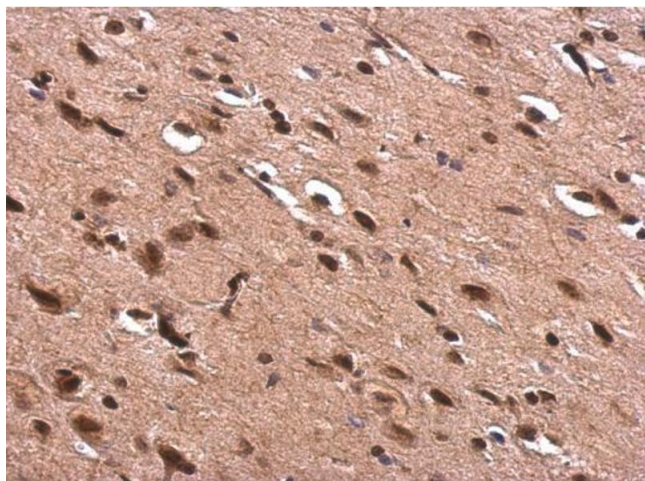
Western Blotting

Image 1. WB Image Sample (30 ug of whole cell lysate) A: Raji 7.5% SDS PAGE antibody diluted at 1:1000



Immunofluorescence

Image 2. ICC/IF Image Confocal immunofluorescence analysis (Olympus FV10i) of paraformaldehyde-fixed HeLa, using AChE, antibody (Green) at 1:500 dilution. Alpha-tubulin filaments were labeled with (Red) at 1:2500.



Immunohistochemistry

Image 3. IHC-P Image AChE antibody detects AChE protein at nucleus on rat fore brain by immunohistochemical analysis. Sample: Paraffin-embedded rat fore brain. AChE antibody , dilution: 1:500.

Please check the [product details page](#) for more images. Overall 5 images are available for ABIN2855111.