

Datasheet for ABIN2855112

anti-RPL11 antibody**3** Images[Go to Product page](#)

Overview

Quantity:	100 µL
Target:	RPL11
Reactivity:	Human
Host:	Rabbit
Clonality:	Polyclonal
Conjugate:	This RPL11 antibody is un-conjugated
Application:	Western Blotting (WB), Immunohistochemistry (Paraffin-embedded Sections) (IHC (p)), Immunohistochemistry (Whole Mount) (IHC (wm))

Product Details

Immunogen:	Recombinant protein encompassing a sequence within the center region of human RPL11. The exact sequence is proprietary.
Isotype:	IgG
Cross-Reactivity:	Human, Mouse, Zebrafish (Danio rerio)
Characteristics:	Rabbit Polyclonal antibody to RPL11 (ribosomal protein L11) RPL11 antibody
Purification:	Purified by antigen-affinity chromatography.

Target Details

Target:	RPL11
Alternative Name:	ribosomal protein L11 (RPL11 Products)

Target Details

Background: Ribosomes, the organelles that catalyze protein synthesis, consist of a small 40S subunit and a large 60S subunit. Together these subunits are composed of 4 RNA species and approximately 80 structurally distinct proteins. This gene encodes a ribosomal protein that is a component of the 60S subunit. The protein belongs to the L5P family of ribosomal proteins. It is located in the cytoplasm. The protein probably associates with the 5S rRNA. Alternative splice variants encoding different isoforms may exist, but they have not been fully characterized. As is typical for genes encoding ribosomal proteins, there are multiple processed pseudogenes of this gene dispersed through the genome.

Molecular Weight: 20 kDa

Gene ID: 6135

UniProt: [P62913](#)

Application Details

Application Notes: WB: 1:500-1:3000. IHC-P: 1:100-1:1000. Optimal dilutions/concentrations should be determined by the researcher. Not tested in other applications.

Comment: Positive Control: HeLa , Mouse liver

Restrictions: For Research Use only

Handling

Format: Liquid

Concentration: 1 mg/mL

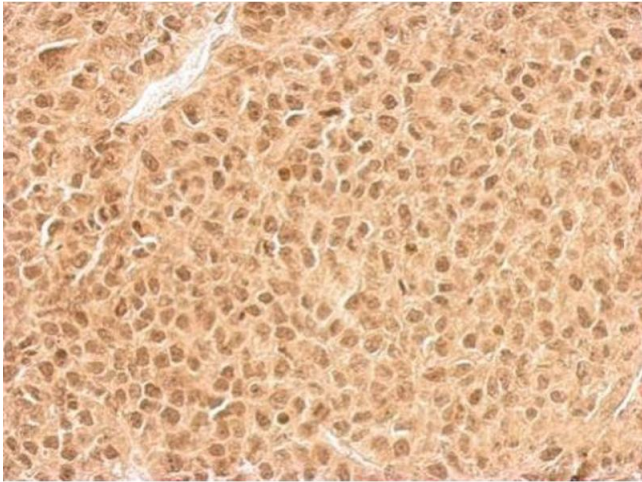
Buffer: 1XPBS (pH 7), 1 % BSA, 20 % Glycerol, 0.01 % Thimerosal

Preservative: Thimerosal (Merthiolate)

Precaution of Use: This product contains Thimerosal (Merthiolate): a POISONOUS AND HAZARDOUS SUBSTANCE which should be handled by trained staff only.

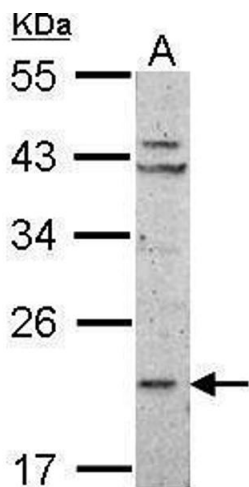
Storage: 4 °C,-20 °C

Storage Comment: Store as concentrated solution. Centrifuge briefly prior to opening vial. For short-term storage (1-2 weeks), store at 4°C. For long-term storage, aliquot and store at -20°C or below. Avoid multiple freeze-thaw cycles.



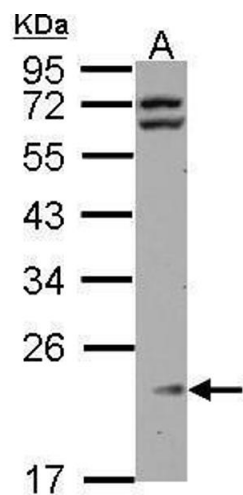
Immunohistochemistry

Image 1. IHC-P Image RPL11 antibody detects RPL11 protein at cytosol and nucleus on HeLa xenograft by immunohistochemical analysis. Sample: Paraffin-embedded HeLa xenograft. RPL11 antibody , dilution: 1:500.



Western Blotting

Image 2. WB Image Sample (50 ug of whole cell lysate) A: mouse Liver 12% SDS PAGE antibody diluted at 1:1000



Western Blotting

Image 3. WB Image Sample (30 ug of whole cell lysate) A: HeLa 12% SDS PAGE antibody diluted at 1:1000