

Datasheet for ABIN2855114

**anti-UBE2M antibody****2** Images[Go to Product page](#)

## Overview

|              |  |
|--------------|--|
| Quantity:    | 100 µL   |
| Target:      | UBE2M (ube2m)  |
| Reactivity:  | Human  |
| Host:        | Rabbit   |
| Clonality:   | Polyclonal   |
| Conjugate:   | This UBE2M antibody is un-conjugated   |
| Application: | Western Blotting (WB), Immunohistochemistry (Paraffin-embedded Sections) (IHC (p)) |

## Product Details

|                   |  |
|-------------------|--|
| Immunogen:        | Recombinant protein encompassing a sequence within the center region of human UBE2M.<br>The exact sequence is proprietary. |
| Isotype:          | IgG  |
| Cross-Reactivity: | Human  |
| Characteristics:  | Rabbit polyclonal antibody to UBE2M (ubiquitin-conjugating enzyme E2M (UBC12 homolog, yeast))<br>UBE2M antibody [N1C2]     |
| Purification:     | Purified by antigen-affinity chromatography.   |

## Target Details

|                   |  |
|-------------------|--|
| Target:           | UBE2M (ube2m)  |
| Alternative Name: | ubiquitin conjugating enzyme E2 M ( <a href="#">ube2m Products</a> ) |

## Target Details

**Background:** The modification of proteins with ubiquitin is an important cellular mechanism for targeting abnormal or short-lived proteins for degradation. Ubiquitination involves at least three classes of enzymes: ubiquitin-activating enzymes, or E1s, ubiquitin-conjugating enzymes, or E2s, and ubiquitin-protein ligases, or E3s. This gene encodes a member of the E2 ubiquitin-conjugating enzyme family. The encoded protein is linked with a ubiquitin-like protein, NEDD8, which can be conjugated to cellular proteins, such as Cdc53/culin.

**Molecular Weight:** 21 kDa

**Gene ID:** 9040

**UniProt:** [P61081](#)

## Application Details

**Application Notes:** WB: 1:500-1:3000. IHC-P: 1:100-1:1000. Optimal dilutions/concentrations should be determined by the researcher. Not tested in other applications.

**Comment:** Positive Control: 293T

**Restrictions:** For Research Use only

## Handling

**Format:** Liquid

**Concentration:** 0.51 mg/mL

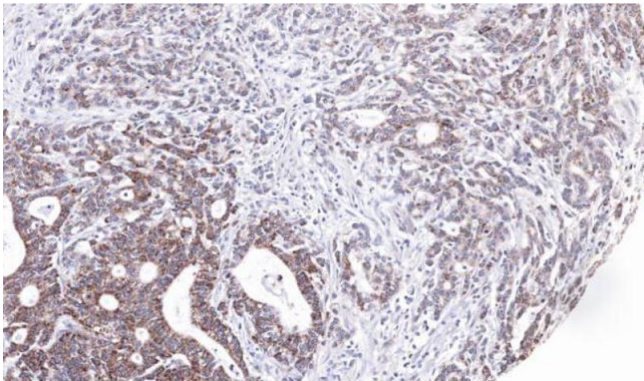
**Buffer:** 0.1M Tris-Glycine ( pH 7), 10 % Glycerol, 0.01 % Thimerosal

**Preservative:** Thimerosal (Merthiolate)

**Precaution of Use:** This product contains Thimerosal (Merthiolate): a POISONOUS AND HAZARDOUS SUBSTANCE which should be handled by trained staff only.

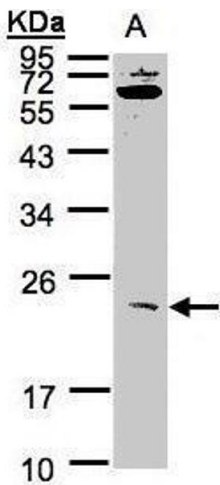
**Storage:** 4 °C, -20 °C

**Storage Comment:** Store as concentrated solution. Centrifuge briefly prior to opening vial. For short-term storage (1-2 weeks), store at 4°C. For long-term storage, aliquot and store at -20°C or below. Avoid multiple freeze-thaw cycles.



Immunohistochemistry

**Image 1.** IHC-P Image Immunohistochemical analysis of paraffin-embedded human gastric cancer, using UBE2M, antibody at 1:100 dilution.



Western Blotting

**Image 2.** WB Image Sample(30 ug whole cell lysate) A:293T 12% SDS PAGE antibody diluted at 1:1000