

Datasheet for ABIN2855118
anti-SNRPA1 antibody (C-Term)

7 Images

[Go to Product page](#)

Overview

Quantity:	100 µL
Target:	SNRPA1 (SNRPA)
Binding Specificity:	C-Term
Reactivity:	Human
Host:	Rabbit
Clonality:	Polyclonal
Conjugate:	This SNRPA1 antibody is un-conjugated
Application:	Western Blotting (WB), Immunofluorescence (IF), Immunohistochemistry (Paraffin-embedded Sections) (IHC (p)), Immunocytochemistry (ICC)

Product Details

Immunogen:	Recombinant protein encompassing a sequence within the C-terminus region of human SNRPA. The exact sequence is proprietary.
Isotype:	IgG
Cross-Reactivity:	Human, Mouse, Rat
Characteristics:	Rabbit Polyclonal antibody to SNRPA (small nuclear ribonucleoprotein polypeptide A) SNRPA antibody
Purification:	Purified by antigen-affinity chromatography.

Target Details

Target:	SNRPA1 (SNRPA)
---------	----------------

Target Details

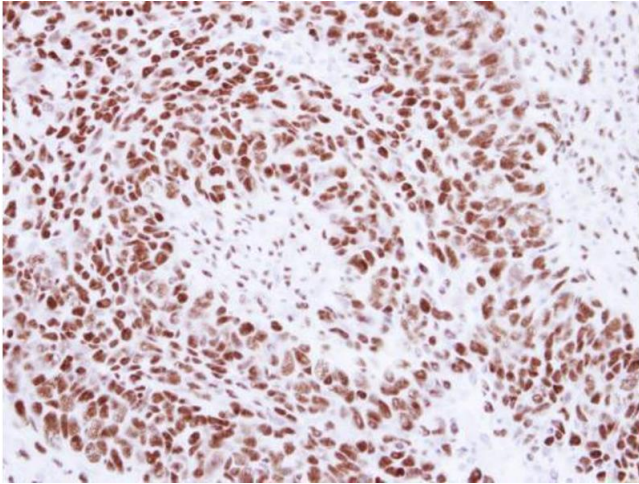
Alternative Name:	small nuclear ribonucleoprotein polypeptide A (SNRPA Products)
Background:	The protein encoded by this gene associates with stem loop II of the U1 small nuclear ribonucleoprotein, which binds the 5' splice site of precursor mRNAs and is required for splicing. The encoded protein autoregulates itself by polyadenylation inhibition of its own pre-mRNA via dimerization and has been implicated in the coupling of splicing and polyadenylation.
	Cellular Localization: Nucleus
Molecular Weight:	31 kDa
Gene ID:	6626
UniProt:	P09012

Application Details

Application Notes:	WB: 1:500-1:3000. ICC/IF: 1:100-1:1000. IHC-P: 1:100-1:1000. Optimal dilutions/concentrations should be determined by the researcher. Not tested in other applications.
Comment:	Positive Control: A549 , HeLa , HepG2
Restrictions:	For Research Use only

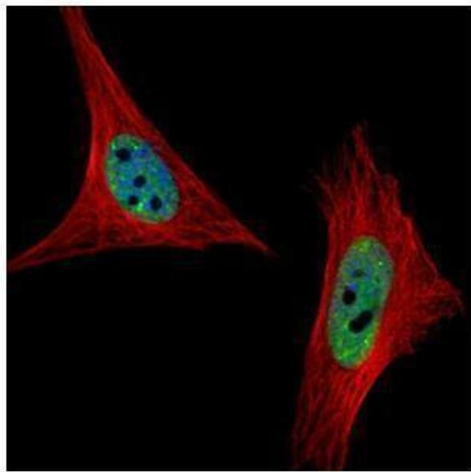
Handling

Format:	Liquid
Concentration:	1 mg/mL
Buffer:	1XPBS (pH 7), 1 % BSA, 20 % Glycerol, 0.01 % Thimerosal
Preservative:	Thimerosal (Merthiolate)
Precaution of Use:	This product contains Thimerosal (Merthiolate): a POISONOUS AND HAZARDOUS SUBSTANCE which should be handled by trained staff only.
Storage:	4 °C,-20 °C
Storage Comment:	Store as concentrated solution. Centrifuge briefly prior to opening vial. For short-term storage (1-2 weeks), store at 4°C. For long-term storage, aliquot and store at -20°C or below. Avoid multiple freeze-thaw cycles.



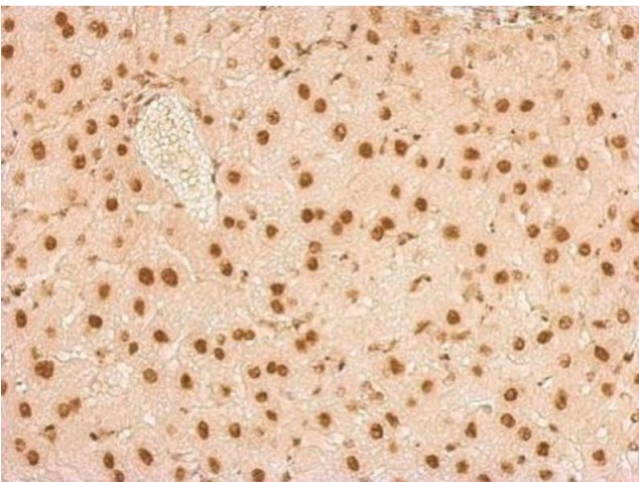
Immunohistochemistry

Image 1. IHC-P Image Immunohistochemical analysis of paraffin-embedded human breast cancer, using SNRPA, antibody at 1:250 dilution.



Immunofluorescence

Image 2. ICC/IF Image Confocal immunofluorescence analysis (Olympus FV10i) of paraformaldehyde-fixed HeLa, using SNRPA, antibody (Green) at 1:500 dilution. Alpha-tubulin filaments were labeled with (Red) at 1:2000.



Immunohistochemistry

Image 3. IHC-P Image SNRPA antibody detects SNRPA protein at nucleus on mouse liver by immunohistochemical analysis. Sample: Paraffin-embedded mouse liver. SNRPA antibody, dilution: 1:500.

Please check the [product details page](#) for more images. Overall 7 images are available for ABIN2855118.