

Datasheet for ABIN2855120

**anti-RING1 antibody****2** Images[Go to Product page](#)

## Overview

Quantity:	100 µL
Target:	RING1
Reactivity:	Human
Host:	Rabbit
Clonality:	Polyclonal
Conjugate:	This RING1 antibody is un-conjugated
Application:	Western Blotting (WB), Immunohistochemistry (Paraffin-embedded Sections) (IHC (p))

## Product Details

Immunogen:	Recombinant protein encompassing a sequence within the center region of human RING1. The exact sequence is proprietary.
Isotype:	IgG
Cross-Reactivity:	Human
Characteristics:	Rabbit Polyclonal antibody to RING1 (ring finger protein 1) RING1 antibody [N1N3]
Purification:	Purified by antigen-affinity chromatography.

## Target Details

Target:	RING1
Alternative Name:	ring finger protein 1 ( <a href="#">RING1 Products</a> )

## Target Details

**Background:** This gene belongs to the RING finger family, members of which encode proteins characterized by a RING domain, a zinc-binding motif related to the zinc finger domain. The gene product can bind DNA and can act as a transcriptional repressor. It is associated with the multimeric polycomb group protein complex. The gene product interacts with the polycomb group proteins BMI1, EDR1, and CBX4, and colocalizes with these proteins in large nuclear domains. It interacts with the CBX4 protein via its glycine-rich C-terminal domain. The gene maps to the HLA class II region, where it is contiguous with the RING finger genes FABGL and HKE4.

**Molecular Weight:** 42 kDa

**Gene ID:** 6015

**UniProt:** [Q06587](#)

## Application Details

**Application Notes:** WB: 1:500-1:3000. IHC-P: 1:100-1:1000. Optimal dilutions/concentrations should be determined by the researcher. Not tested in other applications.

**Comment:** Positive Control: 293T

**Restrictions:** For Research Use only

## Handling

**Format:** Liquid

**Concentration:** 1 mg/mL

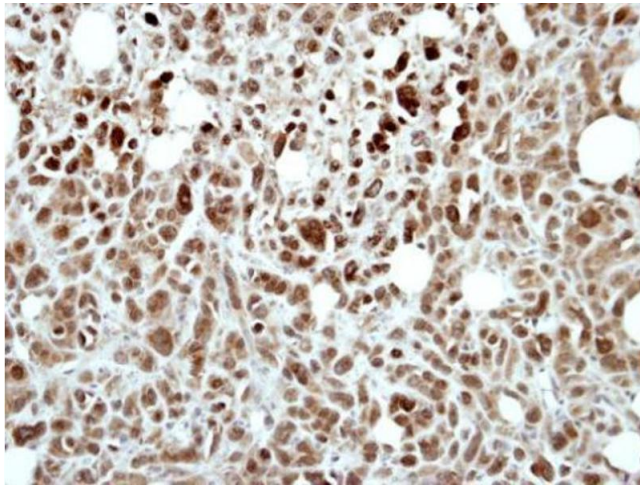
**Buffer:** 1XPBS ( pH 7), 1 % BSA, 20 % Glycerol, 0.01 % Thimerosal

**Preservative:** Thimerosal (Merthiolate)

**Precaution of Use:** This product contains Thimerosal (Merthiolate): a POISONOUS AND HAZARDOUS SUBSTANCE which should be handled by trained staff only.

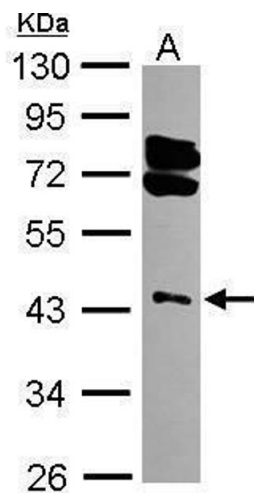
**Storage:** 4 °C,-20 °C

**Storage Comment:** Store as concentrated solution. Centrifuge briefly prior to opening vial. For short-term storage (1-2 weeks), store at 4°C. For long-term storage, aliquot and store at -20°C or below. Avoid multiple freeze-thaw cycles.



#### Immunohistochemistry

**Image 1.** IHC-P Image Immunohistochemical analysis of paraffin-embedded PC9 xenograft, using RING1, antibody at 1:500 dilution.



#### Western Blotting

**Image 2.** WB Image Sample (30 ug of whole cell lysate) A: 293T 10% SDS PAGE antibody diluted at 1:3000