

Datasheet for ABIN2855122

anti-CDA antibody

3 Images

[Go to Product page](#)

Overview

Quantity:	100 µL
Target:	CDA
Reactivity:	Human
Host:	Rabbit
Clonality:	Polyclonal
Conjugate:	This CDA antibody is un-conjugated
Application:	Western Blotting (WB), Immunohistochemistry (Paraffin-embedded Sections) (IHC (p))

Product Details

Immunogen:	Recombinant protein encompassing a sequence within the center region of human CDA. The exact sequence is proprietary.
Isotype:	IgG
Cross-Reactivity:	Human, Mouse
Characteristics:	Rabbit Polyclonal antibody to CDA (cytidine deaminase) CDA antibody
Purification:	Purified by antigen-affinity chromatography.

Target Details

Target:	CDA
Alternative Name:	cytidine deaminase (CDA Products)

Target Details

Background: This gene encodes an enzyme involved in pyrimidine salvaging. The encoded protein forms a homotetramer that catalyzes the irreversible hydrolytic deamination of cytidine and deoxycytidine to uridine and deoxyuridine, respectively. It is one of several deaminases responsible for maintaining the cellular pyrimidine pool. Mutations in this gene are associated with decreased sensitivity to the cytosine nucleoside analogue cytosine arabinoside used in the treatment of certain childhood leukemias.

Molecular Weight: 16 kDa

Gene ID: 978

UniProt: [P32320](#)

Application Details

Application Notes: WB: 1:500-1:3000. IHC-P: 1:100-1:1000. Optimal dilutions/concentrations should be determined by the researcher. Not tested in other applications.

Comment: Positive Control: mouse kidney , A431 , HeLa

Restrictions: For Research Use only

Handling

Format: Liquid

Concentration: 0.71 mg/mL

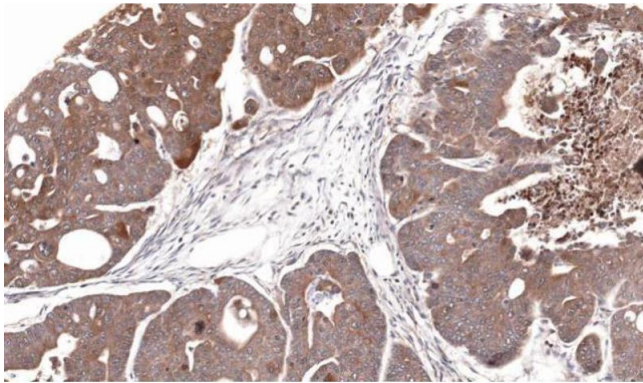
Buffer: 1XPBS (pH 7), 20 % Glycerol, 0.025 % ProClin 300

Preservative: ProClin

Precaution of Use: This product contains ProClin: a POISONOUS AND HAZARDOUS SUBSTANCE which should be handled by trained staff only.

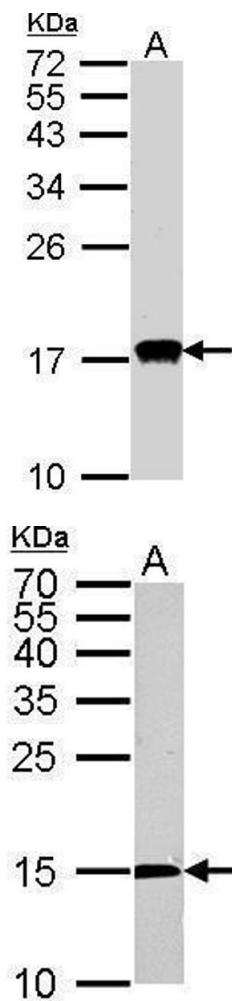
Storage: 4 °C, -20 °C

Storage Comment: Store as concentrated solution. Centrifuge briefly prior to opening vial. For short-term storage (1-2 weeks), store at 4°C. For long-term storage, aliquot and store at -20°C or below. Avoid multiple freeze-thaw cycles.



Immunohistochemistry

Image 1. IHC-P Image Immunohistochemical analysis of paraffin-embedded Gastric CA N87 xenograft, using CDA, antibody at 1:100 dilution.



Western Blotting

Image 2. WB Image Sample(30 ug whole cell lysate) A:HeLa S3, 15% SDS PAGE antibody diluted at 1:1000

Western Blotting

Image 3. WB Image CDA antibody detects CDA protein by Western blot analysis. A. 50 µg mouse kidney lysate/extract 15 % SDS-PAGE CDA antibody , dilution: 1:500