

Datasheet for ABIN2855123
anti-SULT1A3 antibody (Center)[Go to Product page](#)

1 Image

Overview

Quantity:	100 µL
Target:	SULT1A3
Binding Specificity:	Center
Reactivity:	Human
Host:	Rabbit
Clonality:	Polyclonal
Conjugate:	This SULT1A3 antibody is un-conjugated
Application:	Western Blotting (WB)

Product Details

Immunogen:	Recombinant protein encompassing a sequence within the center region of human SULT1A3. The exact sequence is proprietary.
Isotype:	IgG
Cross-Reactivity:	Monkey
Cross-Reactivity (Details):	Monkey (94 %)
Characteristics:	Rabbit Polyclonal antibody to SULT1A3 (sulfotransferase family, cytosolic, 1A, phenol-preferring, member 3) SULT1A3 antibody [N1C3]
Purification:	Purified by antigen-affinity chromatography.

Target Details

Target:	SULT1A3
Alternative Name:	SULT1A3 (SULT1A3 Products)
Background:	Sulfotransferase enzymes catalyze the sulfate conjugation of many hormones, neurotransmitters, drugs, and xenobiotic compounds. These cytosolic enzymes are different in their tissue distributions and substrate specificities. The gene structure (number and length of exons) is similar among family members. This gene encodes a phenol sulfotransferase with thermolabile enzyme activity. Four sulfotransferase genes are located on the p arm of chromosome 16, this gene and SULT1A4 arose from a segmental duplication. This gene is the most centromeric of the four sulfotransferase genes. Exons of this gene overlap with exons of a gene that encodes a protein containing GIY-YIG domains (GIYD1). Multiple alternatively spliced variants that encode the same protein have been described.
Molecular Weight:	34 kDa
Gene ID:	6818
Pathways:	ER-Nucleus Signaling

Application Details

Application Notes:	Suggested dilution Reference Western blot 1:500-1:3000* Not tested in other applications. *Optimal dilutions/concentrations should be determined by the researcher.Suggested dilutionReferenceWestern blot1:500-1:3000*
Comment:	Positive Control: A549 , HepG2
Restrictions:	For Research Use only

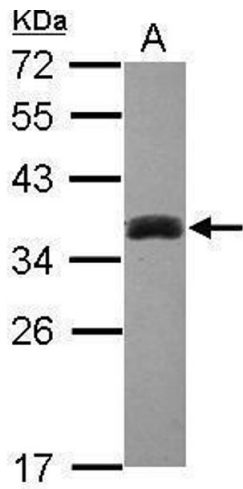
Handling

Format:	Liquid
Concentration:	0.58 mg/mL
Buffer:	1XPBS, 1 % BSA, 20 % Glycerol (pH 7). 0.01 % Thimerosal was added as a preservative.
Preservative:	Thimerosal (Merthiolate)
Precaution of Use:	This product contains Thimerosal (Merthiolate): a POISONOUS AND HAZARDOUS SUBSTANCE which should be handled by trained staff only.
Storage:	-20 °C

Handling

Storage Comment: Keep as concentrated solution. Aliquot and store at -20°C or below. Avoid multiple freeze-thaw cycles.

Images



Western Blotting

Image 1. WB Image Sample (30 ug of whole cell lysate) A: HepG2 12% SDS PAGE antibody diluted at 1:1000