

Datasheet for ABIN2855125  
**anti-GRK2 antibody (C-Term)**

## 6 Images

[Go to Product page](#)

## Overview

Quantity:	100 µL
Target:	GRK2 (ADRBK1)
Binding Specificity:	C-Term
Reactivity:	Human
Host:	Rabbit
Clonality:	Polyclonal
Conjugate:	This GRK2 antibody is un-conjugated
Application:	Western Blotting (WB), Immunohistochemistry (Paraffin-embedded Sections) (IHC (p)), Immunofluorescence (IF), Immunocytochemistry (ICC), Flow Cytometry (FACS), Immunoprecipitation (IP)

## Product Details

Immunogen:	Recombinant protein encompassing a sequence within the C-terminus region of human GRK2. The exact sequence is proprietary.
Isotype:	IgG
Cross-Reactivity:	Human, Mouse
Characteristics:	Rabbit Polyclonal antibody to GRK2 (adrenergic, beta, receptor kinase 1) GRK2 antibody [C2C3], C-term
Purification:	Purified by antigen-affinity chromatography.
Grade:	KO Validated

## Target Details

Target:	GRK2 (ADRBK1)
Alternative Name:	G protein-coupled receptor kinase 2 ( <a href="#">ADRBK1 Products</a> )
Background:	The product of this gene phosphorylates the beta-2-adrenergic receptor and appears to mediate agonist-specific desensitization observed at high agonist concentrations. This protein is an ubiquitous cytosolic enzyme that specifically phosphorylates the activated form of the beta-adrenergic and related G-protein-coupled receptors. Abnormal coupling of beta-adrenergic receptor to G protein is involved in the pathogenesis of the failing heart.
Molecular Weight:	80 kDa
Gene ID:	156
UniProt:	<a href="#">P25098</a>
Pathways:	<a href="#">EGFR Signaling Pathway</a> , <a href="#">Neurotrophin Signaling Pathway</a> , <a href="#">Regulation of G-Protein Coupled Receptor Protein Signaling</a> , <a href="#">CXCR4-mediated Signaling Events</a> , <a href="#">G-protein mediated Events</a> , <a href="#">Interaction of EGFR with phospholipase C-gamma</a> , <a href="#">Thromboxane A2 Receptor Signaling</a>

## Application Details

Application Notes:	WB: 1:500-1:3000. ICC/IF: 1:100-1:1000. IHC-P: 1:100-1:1000. IP: 1:100-1:500. Optimal dilutions/concentrations should be determined by the researcher. Not tested in other applications.
Comment:	Positive Control: ADRBK1-transfected 293T Validation: KO/KD, Overexpression
Restrictions:	For Research Use only

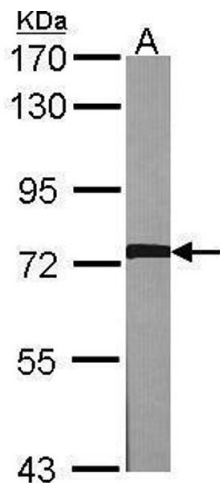
## Handling

Format:	Liquid
Concentration:	0.82 mg/mL
Buffer:	1XPBS pH 7, 20 % Glycerol, 0.025 % ProClin 300
Preservative:	ProClin
Precaution of Use:	This product contains ProClin: a POISONOUS AND HAZARDOUS SUBSTANCE which should be handled by trained staff only.

Handling

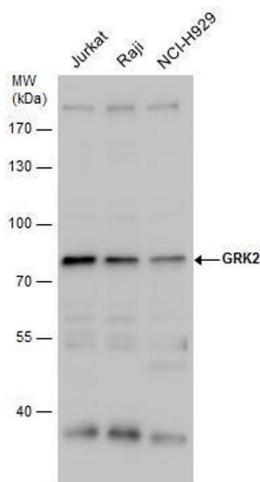
Storage:	4 °C,-20 °C
Storage Comment:	Store as concentrated solution. Centrifuge briefly prior to opening vial. For short-term storage (1-2 weeks), store at 4°C. For long-term storage, aliquot and store at -20°C or below. Avoid multiple freeze-thaw cycles.

Images



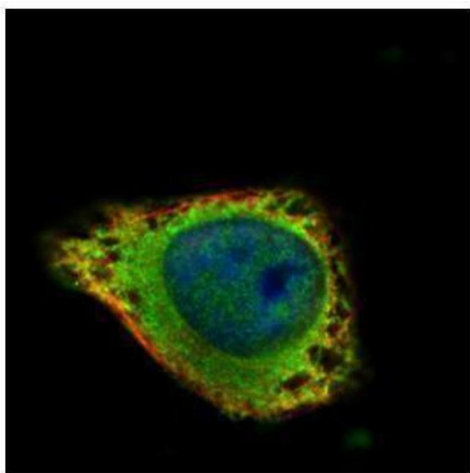
**Western Blotting**

**Image 1.** WB Image Sample (30 ug of whole cell lysate)  
A:NIH-3T3 7.5% SDS PAGE antibody diluted at 1:1000



**Western Blotting**

**Image 2.** WB Image GRK2 antibody detects GRK2 protein by western blot analysis. Various whole cell extracts (30 µg) were separated by 7.5% SDS-PAGE, and the membrane was blotted with GRK2 antibody , diluted by 1:1000.



**Immunofluorescence**

**Image 3.** ICC/IF Image Confocal immunofluorescence analysis (Olympus FV10i) of methanol-fixed HeLa, using GRK2, antibody (Green) at 1:100 dilution. Alpha-tubulin filaments were labeled with (Red) at 1:2000.

## Images

---

Please check the [product details page](#) for more images. Overall 6 images are available for ABIN2855125.