



[Go to Product page](#)

Datasheet for ABIN2855128

anti-SDHA antibody (N-Term)

4 Images

1 Publication

Overview

Quantity:	100 µL
Target:	SDHA
Binding Specificity:	N-Term
Reactivity:	Human, Mouse
Host:	Rabbit
Clonality:	Polyclonal
Conjugate:	This SDHA antibody is un-conjugated
Application:	Western Blotting (WB), Immunofluorescence (IF), Immunohistochemistry (Paraffin-embedded Sections) (IHC (p)), Immunocytochemistry (ICC)

Product Details

Immunogen:	Recombinant protein encompassing a sequence within the N-terminus region of human SDHA. The exact sequence is proprietary.
Isotype:	IgG
Characteristics:	Rabbit Polyclonal antibody to SDHA (succinate dehydrogenase complex, subunit A, flavoprotein (Fp)) SDHA antibody
Purification:	Purified by antigen-affinity chromatography.

Target Details

Target:	SDHA
---------	------

Target Details

Alternative Name: SDHA ([SDHA Products](#))

Background: This gene encodes a major catalytic subunit of succinate-ubiquinone oxidoreductase, a complex of the mitochondrial respiratory chain. The complex is composed of four nuclear-encoded subunits and is localized in the mitochondrial inner membrane. Mutations in this gene have been associated with a form of mitochondrial respiratory chain deficiency known as Leigh Syndrome. A pseudogene has been identified on chromosome 3q29.

Cellular Localization: Mitochondrion inner membrane

Molecular Weight: 73 kDa

Gene ID: 6389

Application Details

Application Notes: Suggested dilution Reference ICC/IF 1:100-1:1000* IHC (Formalin-fixed paraffin-embedded sections) 1:100-1:1000* Western blot 1:500-1:3000* Not tested in other applications. *Optimal dilutions/concentrations should be determined by the researcher. Suggested dilution Reference ICC/IF 1:100-1:1000* IHC (Formalin-fixed paraffin-embedded sections) 1:100-1:1000* Western blot 1:500-1:3000*

Comment: Positive Control: Molt-4 , mouse brain

Restrictions: For Research Use only

Handling

Format: Liquid

Concentration: 0.22 mg/mL

Buffer: 0.1M Tris, 0.1M Glycine, 10 % Glycerol (pH 7). 0.01 % Thimerosal was added as a preservative.

Preservative: Thimerosal (Merthiolate)

Precaution of Use: This product contains Thimerosal (Merthiolate): a POISONOUS AND HAZARDOUS SUBSTANCE which should be handled by trained staff only.

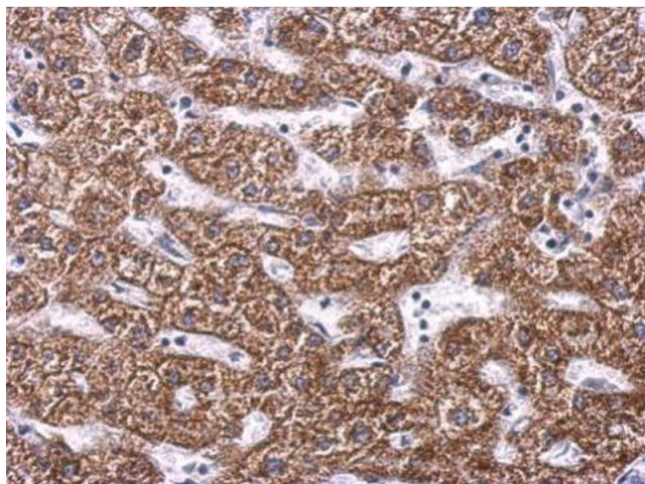
Storage: -20 °C

Storage Comment: Keep as concentrated solution. Aliquot and store at -20°C or below. Avoid multiple freeze-thaw cycles.

Publications

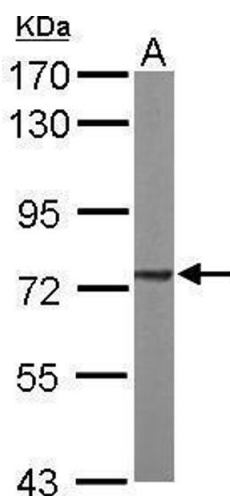
Product cited in: Ochiai, Hayashi, Umeda, Yoshimura, Harada, Shimizu, Nakano, Saitoh, Liu, Yamamoto, Okamura, Ohkawa, Kimura, Nikaido: "Genome-wide kinetic properties of transcriptional bursting in mouse embryonic stem cells." in: **Science advances**, Vol. 6, Issue 25, pp. eaaz6699, (2020) ([PubMed](#)).

Images



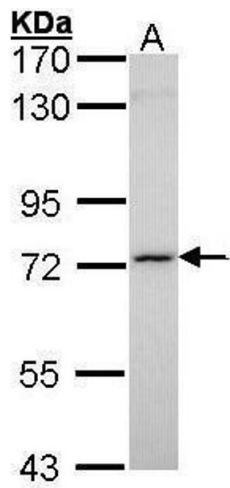
Immunohistochemistry

Image 1. IHC-P Image SDHA antibody detects SDHA protein at cytosol on human hepatoma by immunohistochemical analysis. Sample: Paraffin-embedded hepatoma. SDHA antibody, dilution: 1:500.



Western Blotting

Image 2. WB Image Sample (50 ug of whole cell lysate) A: mouse brain 7.5% SDS PAGE antibody diluted at 1:1000



Western Blotting

Image 3. WB Image Sample (30 ug of whole cell lysate) A:
Molt-4 , 7.5% SDS PAGE antibody diluted at 1:1000

Please check the [product details page](#) for more images. Overall 4 images are available for ABIN2855128.