

Datasheet for ABIN2855129
anti-PPP2CB antibody (Center)

3 Images

[Go to Product page](#)

Overview

Quantity:	100 µL
Target:	PPP2CB
Binding Specificity:	Center
Reactivity:	Human, Mouse
Host:	Rabbit
Clonality:	Polyclonal
Conjugate:	This PPP2CB antibody is un-conjugated
Application:	Western Blotting (WB), Immunofluorescence (IF), Immunocytochemistry (ICC)

Product Details

Immunogen:	Recombinant protein encompassing a sequence within the center region of human PP2A beta. The exact sequence is proprietary.
Isotype:	IgG
Cross-Reactivity:	Rat (Rattus), Zebrafish (Danio rerio), Xenopus laevis, Xenopus tropicalis, Rabbit, Chicken, Rhesus Monkey, Cow (Bovine)
Cross-Reactivity (Details):	Rat (100 %), Zebrafish (100 %), Xenopus laevis (100 %), Xenopus Tropicalis (100 %), Rabbit (100 %), Chicken (100 %), Rhesus Monkey (100 %), Bovine (100 %)
Characteristics:	Rabbit Polyclonal antibody to PP2A beta (protein phosphatase 2, catalytic subunit, beta isozyme) PP2A beta antibody
Purification:	Purified by antigen-affinity chromatography.

Target Details

Target:	PPP2CB
Alternative Name:	PP2A beta (PPP2CB Products)
Background:	<p>This gene encodes the phosphatase 2A catalytic subunit. Protein phosphatase 2A is one of the four major Ser/Thr phosphatases, and it is implicated in the negative control of cell growth and division. It consists of a common heteromeric core enzyme, which is composed of a catalytic subunit and a constant regulatory subunit, that associates with a variety of regulatory subunits. This gene encodes a beta isoform of the catalytic subunit. Two transcript variants encoding the same protein have been identified for this gene.</p> <p>Cellular Localization: Cytoplasm , Nucleus , Centromere , Spindle</p>
Molecular Weight:	36 kDa
Gene ID:	5516
Pathways:	Mitotic G1-G1/S Phases , Hepatitis C , Toll-Like Receptors Cascades

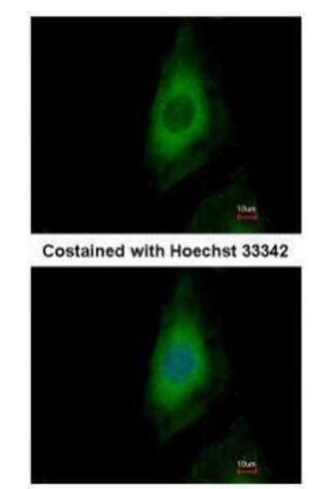
Application Details

Application Notes:	Suggested dilution Reference ICC/IF 1:100-1:1000* Western blot 1:500-1:3000* Not tested in other applications. *Optimal dilutions/concentrations should be determined by the researcher.Suggested dilutionReferenceICC/IF1:100-1:1000* Western blot1:500-1:3000*
Comment:	Positive Control: 293T , A431 , mouse brain
Restrictions:	For Research Use only

Handling

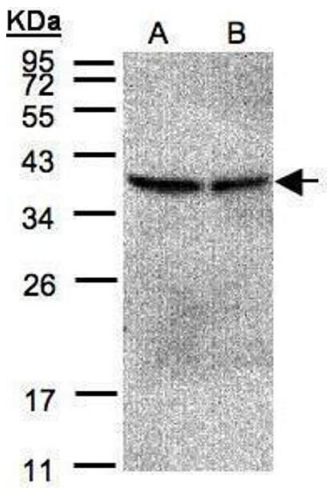
Format:	Liquid
Concentration:	1 mg/mL
Buffer:	1XPBS, 40 % Glycerol (pH 7). 0.01 % Thimerosal was added as a preservative.
Preservative:	Thimerosal (Merthiolate)
Precaution of Use:	This product contains Thimerosal (Merthiolate): a POISONOUS AND HAZARDOUS SUBSTANCE which should be handled by trained staff only.
Storage:	-20 °C
Storage Comment:	Keep as concentrated solution. Aliquot and store at -20°C or below. Avoid multiple freeze-thaw

cycles.



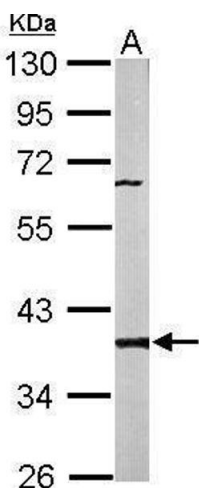
Immunofluorescence

Image 1. ICC/IF Image Immunofluorescence analysis of paraformaldehyde-fixed HeLa, using PP2A beta, antibody at 1:500 dilution.



Western Blotting

Image 2. WB Image Sample(30 µg of whole cell lysate) A:293T B:A431, 12% SDS PAGE antibody diluted at 1:500



Western Blotting

Image 3. WB Image Sample (50 ug of whole cell lysate) A: Mouse brain 10% SDS PAGE antibody diluted at 1:1000