

Datasheet for ABIN2855133

anti-PGD antibody

7 Images

[Go to Product page](#)

Overview

Quantity:	100 µL
Target:	PGD
Reactivity:	Human
Host:	Rabbit
Clonality:	Polyclonal
Conjugate:	This PGD antibody is un-conjugated
Application:	Western Blotting (WB), Immunofluorescence (IF), Immunocytochemistry (ICC), Immunohistochemistry (Paraffin-embedded Sections) (IHC (p))

Product Details

Immunogen:	Recombinant protein encompassing a sequence within the center region of human PGD. The exact sequence is proprietary.
Isotype:	IgG
Cross-Reactivity:	Human, Mouse
Characteristics:	Rabbit Polyclonal antibody to PGD (phosphogluconate dehydrogenase) PGD antibody [N1N3]
Purification:	Purified by antigen-affinity chromatography.

Target Details

Target:	PGD
Alternative Name:	phosphogluconate dehydrogenase (PGD Products)

Target Details

Background: 6-phosphogluconate dehydrogenase is the second dehydrogenase in the pentose phosphate shunt. Deficiency of this enzyme is generally asymptomatic, and the inheritance of this disorder is autosomal dominant. Hemolysis results from combined deficiency of 6-phosphogluconate dehydrogenase and 6-phosphogluconolactonase suggesting a synergism of the two enzymopathies.

Molecular Weight: 53 kDa

Gene ID: 5226

UniProt: [P52209](#)

Application Details

Application Notes: WB: 1:500-1:3000. ICC/IF: 1:100-1:1000. IHC-P: 1:100-1:1000. Optimal dilutions/concentrations should be determined by the researcher. Not tested in other applications.

Comment: Positive Control: 293T , Molt-4 , Raji , mouse heart , mouse lung
Validation: Orthogonal

Restrictions: For Research Use only

Handling

Format: Liquid

Concentration: 1 mg/mL

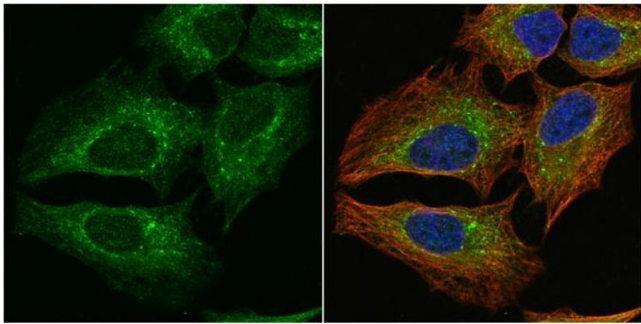
Buffer: 0.1M Tris-Glycine (pH 7), 10 % Glycerol, 0.01 % Thimerosal

Preservative: Thimerosal (Merthiolate)

Precaution of Use: This product contains Thimerosal (Merthiolate): a POISONOUS AND HAZARDOUS SUBSTANCE which should be handled by trained staff only.

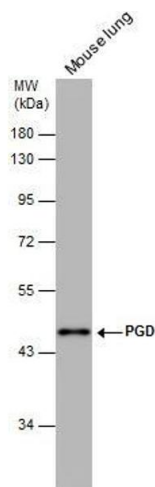
Storage: 4 °C, -20 °C

Storage Comment: Store as concentrated solution. Centrifuge briefly prior to opening vial. For short-term storage (1-2 weeks), store at 4°C. For long-term storage, aliquot and store at -20°C or below. Avoid multiple freeze-thaw cycles.



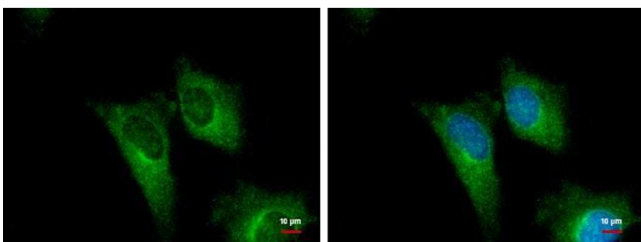
Immunofluorescence

Image 1. ICC/IF Image PGD antibody [N1N3] detects PGD protein at cytoplasm by immunofluorescent analysis. Sample: HeLa cells were fixed in 4% paraformaldehyde at RT for 15 min. Green: PGD protein stained by PGD antibody [N1N3], diluted at 1:1000. Red: alpha Tubulin, a cytoskeleton marker, stained by alpha Tubulin antibody [GT114], diluted at 1:1000. Blue: Hoechst 33342 staining.



Western Blotting

Image 2. WB Image PGD antibody [N1N3] detects PGD protein by western blot analysis. Mouse tissue extracts (50 µg) was separated by 10% SDS-PAGE, and the membrane was blotted with PGD antibody [N1N3], diluted at 1:500.



Immunofluorescence

Image 3. ICC/IF Image PGD antibody [N1N3] detects PGD protein at cytoplasm by immunofluorescent analysis. Sample: HeLa cells were fixed in ice-cold MeOH for 5 min. Green: PGD protein stained by PGD antibody [N1N3], diluted at 1:500. Blue: Hoechst 33342 staining.

Please check the [product details page](#) for more images. Overall 7 images are available for ABIN2855133.