

Datasheet for ABIN2855136
anti-Moesin antibody (C-Term)

6 Images

[Go to Product page](#)

Overview

Quantity:	100 µL
Target:	Moesin (MSN)
Binding Specificity:	C-Term
Reactivity:	Human
Host:	Rabbit
Clonality:	Polyclonal
Conjugate:	This Moesin antibody is un-conjugated
Application:	Western Blotting (WB), Immunofluorescence (IF), Immunohistochemistry (Paraffin-embedded Sections) (IHC (p)), Immunoprecipitation (IP), Immunocytochemistry (ICC)

Product Details

Immunogen:	Recombinant protein encompassing a sequence within the C-terminus region of human Moesin. The exact sequence is proprietary.
Isotype:	IgG
Cross-Reactivity:	Human, Mouse, Rat
Characteristics:	Rabbit Polyclonal antibody to Moesin (moesin) Moesin antibody [C2C3], C-term
Purification:	Purified by antigen-affinity chromatography.
Grade:	KO Validated

Target Details

Target:	Moesin (MSN)
Alternative Name:	moesin (MSN Products)
Background:	<p>Moesin (for membrane-organizing extension spike protein) is a member of the ERM family which includes ezrin and radixin. ERM proteins appear to function as cross-linkers between plasma membranes and actin-based cytoskeletons. Moesin is localized to filopodia and other membranous protrusions that are important for cell-cell recognition and signaling and for cell movement.</p> <p>Cellular Localization: Cell membrane, Peripheral membrane protein, Cytoplasmic side (By similarity) , Cytoplasm , cytoskeleton (By similarity) , Apical cell membrane, Peripheral membrane protein, Cytoplasmic side (By similarity) , Cell projection , microvillus membrane, Periphe</p>
Molecular Weight:	68 kDa
Gene ID:	4478
UniProt:	P26038
Pathways:	Asymmetric Protein Localization

Application Details

Application Notes:	WB: 1:500-1:3000. ICC/IF: 1:100-1:1000. IHC-P: 1:100-1:1000. IP: 1:100-1:500. Optimal dilutions/concentrations should be determined by the researcher. Not tested in other applications.
Comment:	Positive Control: GL261 , C8D30 , NIH-3T3 , BCL-1 , Raw264.7 , C2C12 Validation: KO/KD
Restrictions:	For Research Use only

Handling

Format:	Liquid
Concentration:	0.21 mg/mL
Buffer:	1XPBS (pH 7), 1 % BSA, 20 % Glycerol, 0.01 % Thimerosal
Preservative:	Thimerosal (Merthiolate)
Precaution of Use:	This product contains Thimerosal (Merthiolate): a POISONOUS AND HAZARDOUS SUBSTANCE

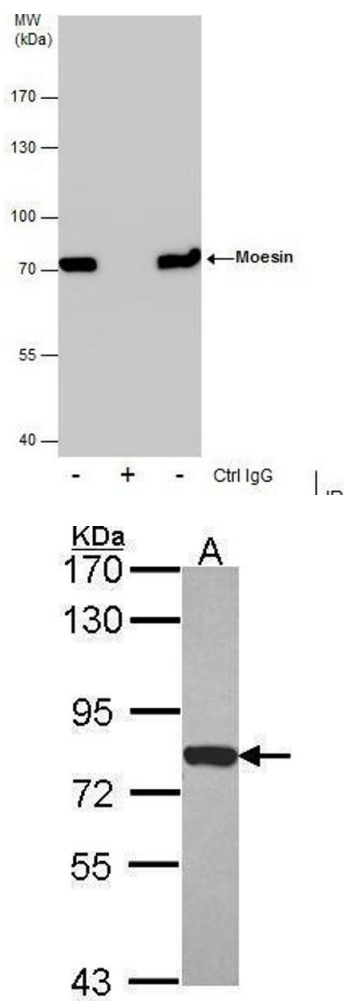
Handling

which should be handled by trained staff only.

Storage: 4 °C,-20 °C

Storage Comment: Store as concentrated solution. Centrifuge briefly prior to opening vial. For short-term storage (1-2 weeks), store at 4°C. For long-term storage, aliquot and store at -20°C or below. Avoid multiple freeze-thaw cycles.

Images

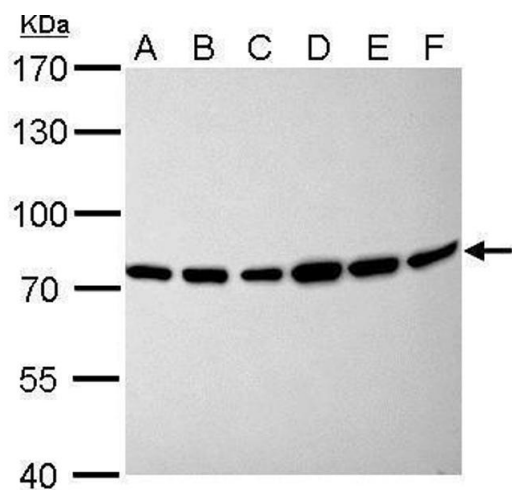


Immunoprecipitation

Image 1. IP Image Immunoprecipitation of Moesin protein from A431 whole cell extracts using 5 µg of Moesin antibody [C2C3], C-term, Western blot analysis was performed using Moesin antibody [C2C3], C-term, EasyBlot anti-Rabbit IgG was used as a secondary reagent.

Western Blotting

Image 2. WB Image Sample (30 ug of whole cell lysate) A: NT2D1 7.5% SDS PAGE antibody diluted at 1:1000



Western Blotting

Image 3. WB Image Moesin antibody [C2C3], C-term detects MSN protein by Western blot analysis. A. 30 µg GL261 whole cell lysate/extract B. 30 µg C8D30 whole cell lysate/extract C. 30 µg NIH-3T3 whole cell lysate/extract D. 30 µg BCL-1 whole cell lysate/extract E. 30 µg Raw264.7 whole cell lysate/extract F. 30 µg C2C12 whole cell lysate/extract 7.5 % SDS-PAGE Moesin antibody [C2C3], C-term , dilution: 1:1000

Please check the [product details page](#) for more images. Overall 6 images are available for ABIN2855136.