



[Go to Product page](#)

Datasheet for ABIN2855139
anti-Cytochrome C1 antibody

3 Images

Overview

Quantity:	100 µL
Target:	Cytochrome C1 (CYC1)
Reactivity:	Human
Host:	Rabbit
Clonality:	Polyclonal
Conjugate:	This Cytochrome C1 antibody is un-conjugated
Application:	Western Blotting (WB), Immunohistochemistry (Paraffin-embedded Sections) (IHC (p))

Product Details

Immunogen:	Recombinant protein encompassing a sequence within the center region of human CYC1. The exact sequence is proprietary.
Isotype:	IgG
Cross-Reactivity:	Human, Mouse
Characteristics:	Rabbit Polyclonal antibody to Cytochrome C1 (cytochrome c-1) Cytochrome C1 antibody
Purification:	Affinity purified by Protein A.

Target Details

Target:	Cytochrome C1 (CYC1)
Alternative Name:	cytochrome c1 (CYC1 Products)

Target Details

Background: This is the heme-containing component of the cytochrome b-c1 complex, which accepts electrons from Rieske protein and transfers electrons to cytochrome c in the mitochondrial respiratory chain.

Cellular Localization: Mitochondrion inner membrane

Molecular Weight: 35 kDa

Gene ID: 1537

UniProt: [P08574](#)

Application Details

Application Notes: WB: 1:1000-1:10000. IHC-P: 1:100-1:1000. Optimal dilutions/concentrations should be determined by the researcher. Not tested in other applications.

Comment: Positive Control: Mouse brain , H1299

Restrictions: For Research Use only

Handling

Format: Liquid

Concentration: 2 mg/mL

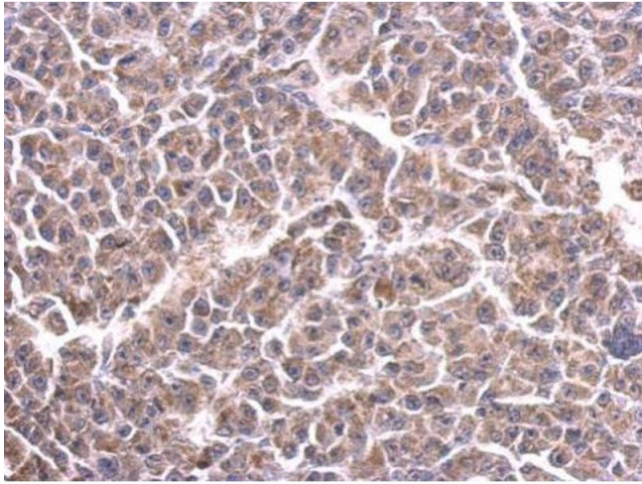
Buffer: 1XPBS (pH 7), 40 % Glycerol, 0.01 % Thimerosal

Preservative: Thimerosal (Merthiolate)

Precaution of Use: This product contains Thimerosal (Merthiolate): a POISONOUS AND HAZARDOUS SUBSTANCE which should be handled by trained staff only.

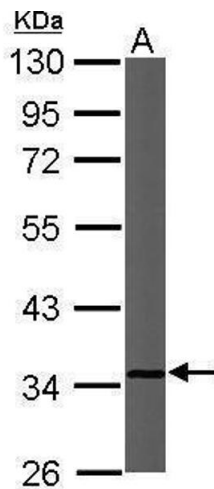
Storage: 4 °C,-20 °C

Storage Comment: Store as concentrated solution. Centrifuge briefly prior to opening vial. For short-term storage (1-2 weeks), store at 4°C. For long-term storage, aliquot and store at -20°C or below. Avoid multiple freeze-thaw cycles.



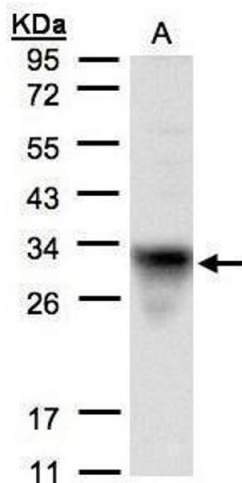
Immunohistochemistry

Image 1. IHC-P Image Cytochrome C1 antibody detects CYC1 protein at cytosol on BT483 xenograft by immunohistochemical analysis. Sample: Paraffin-embedded BT483 xenograft. Cytochrome C1 antibody, dilution: 1:500.



Western Blotting

Image 2. WB Image Sample (50 µg of whole cell lysate) A: Mouse brain 10% SDS PAGE antibody diluted at 1:5000



Western Blotting

Image 3. WB Image Sample(30 µg of whole cell lysate) A:H1299 12% SDS PAGE antibody diluted at 1:1500