

Datasheet for ABIN2855141
anti-SOS2 antibody (Center)

3 Images

[Go to Product page](#)

Overview

Quantity:	100 µL
Target:	SOS2
Binding Specificity:	Center
Reactivity:	Human
Host:	Rabbit
Clonality:	Polyclonal
Conjugate:	This SOS2 antibody is un-conjugated
Application:	Western Blotting (WB), Immunocytochemistry (ICC), Immunofluorescence (IF), Immunohistochemistry (Paraffin-embedded Sections) (IHC (p))

Product Details

Immunogen:	Recombinant protein encompassing a sequence within the center region of human SOS2. The exact sequence is proprietary.
Isotype:	IgG
Characteristics:	Rabbit Polyclonal antibody to SOS2 (son of sevenless homolog 2 (Drosophila)) SOS2 antibody
Purification:	Affinity purified by Protein A.

Target Details

Target:	SOS2
Alternative Name:	SOS2 (SOS2 Products)

Target Details

Molecular Weight: 153 kDa

Gene ID: 6655

Pathways: [RTK Signaling](#), [Neurotrophin Signaling Pathway](#), [Hepatitis C](#), [BCR Signaling](#)

Application Details

Application Notes: Suggested dilution Reference ICC/IF 1:100-1:1000* IHC (Formalin-fixed paraffin-embedded sections) 1:100-1:1000* Western blot 1:500-1:3000* Not tested in other applications. *Optimal dilutions/concentrations should be determined by the researcher. Suggested dilution Reference ICC/IF 1:100-1:1000* IHC (Formalin-fixed paraffin-embedded sections) 1:100-1:1000* Western blot 1:500-1:3000*

Comment: Positive Control: A549

Restrictions: For Research Use only

Handling

Format: Liquid

Concentration: 2 mg/mL

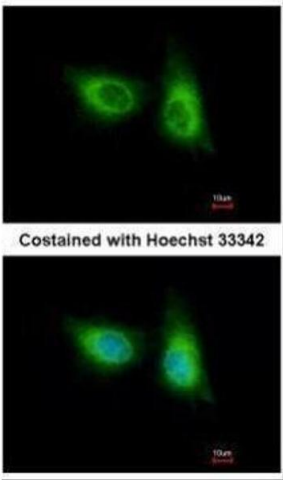
Buffer: 1XPBS, 40 % Glycerol (pH 7). 0.01 % Thimerosal was added as a preservative.

Preservative: Thimerosal (Merthiolate)

Precaution of Use: This product contains Thimerosal (Merthiolate): a POISONOUS AND HAZARDOUS SUBSTANCE which should be handled by trained staff only.

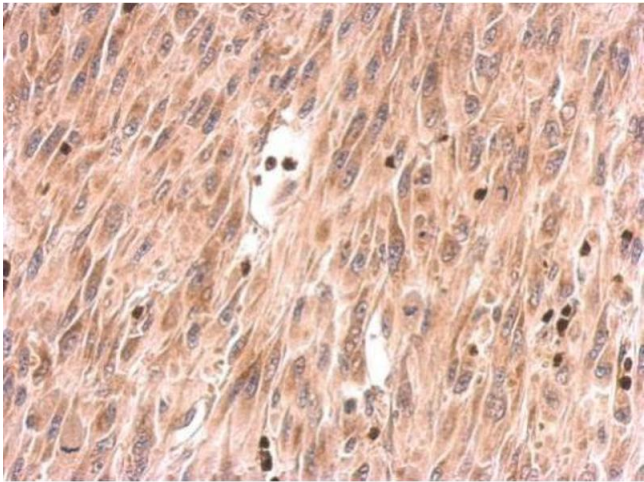
Storage: -20 °C

Storage Comment: Keep as concentrated solution. Aliquot and store at -20°C or below. Avoid multiple freeze-thaw cycles.



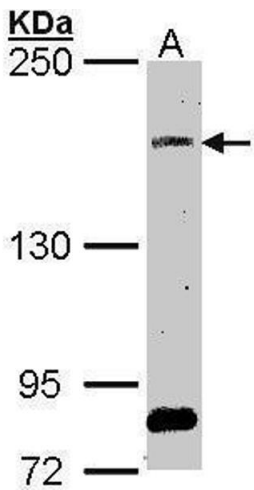
Immunofluorescence

Image 1. ICC/IF Image Immunofluorescence analysis of methanol-fixed A549, using SOS2, antibody at 1:500 dilution.



Immunohistochemistry

Image 2. IHC-P Image SOS2 antibody detects SOS2 protein at cytosol on U87 xenograft by immunohistochemical analysis. Sample: Paraffin-embedded U87 xenograft. SOS2 antibody , dilution: 1:500.



Western Blotting

Image 3. WB Image Sample (30 ug of whole cell lysate) A: A549 5% SDS PAGE antibody diluted at 1:1000