

Datasheet for ABIN2855142  
**anti-LTBP4 antibody (N-Term)**

## 4 Images

[Go to Product page](#)

## Overview

Quantity:	100 µL
Target:	LTBP4
Binding Specificity:	N-Term
Reactivity:	Human
Host:	Rabbit
Clonality:	Polyclonal
Conjugate:	This LTBP4 antibody is un-conjugated
Application:	Western Blotting (WB), Immunofluorescence (IF), Immunohistochemistry (Paraffin-embedded Sections) (IHC (p)), Immunocytochemistry (ICC)

## Product Details

Immunogen:	Recombinant protein encompassing a sequence within the N-terminus region of human LTBP4. The exact sequence is proprietary.
Isotype:	IgG
Cross-Reactivity:	Human, Mouse
Characteristics:	Rabbit Polyclonal antibody to LTBP4 (latent transforming growth factor beta binding protein 4) LTBP4 antibody [N1N2], N-term
Purification:	Purified by antigen-affinity chromatography.

## Target Details

Target:	LTBP4
---------	-------

## Target Details

Alternative Name:	latent transforming growth factor beta binding protein 4 ( <a href="#">LTBP4 Products</a> )
Background:	<p>Transforming growth factor-beta, or TGFB (see TGFB1, MIM 190180), remains biologically latent after secretion, blocked from activity by its N-terminal propeptide (the latency-associated peptide, or LAP). TGFB is activated by its dissociation from LAP. The latent form of TGFB is secreted in association with a latent TGFB-binding protein, or LTBP (see LTBP1, MIM 150390), and assembled into the extracellular matrix. LTBPs are mainly composed of epidermal growth factor (EGF, MIM 131530)-like repeats and protein domains with 8-cysteine repeats, both of which are also found in fibrillins (e.g., MIM 134797). See Oklu and Hesketh (2000) [PubMed 11104663] for a review of the LTBP gene family.[supplied by OMIM]</p> <p>Cellular Localization: Secreted , extracellular space , extracellular matrix</p>
Molecular Weight:	173 kDa
Gene ID:	8425
UniProt:	<a href="#">Q8N2S1</a>
Pathways:	<a href="#">Hormone Transport, Growth Factor Binding</a>

## Application Details

Application Notes:	WB: 1:500-1:3000. ICC/IF: 1:100-1:1000. IHC-P: 1:100-1:1000. Optimal dilutions/concentrations should be determined by the researcher. Not tested in other applications.
Comment:	Positive Control: Mouse brain , Positive Control: Mouse brain
Restrictions:	For Research Use only

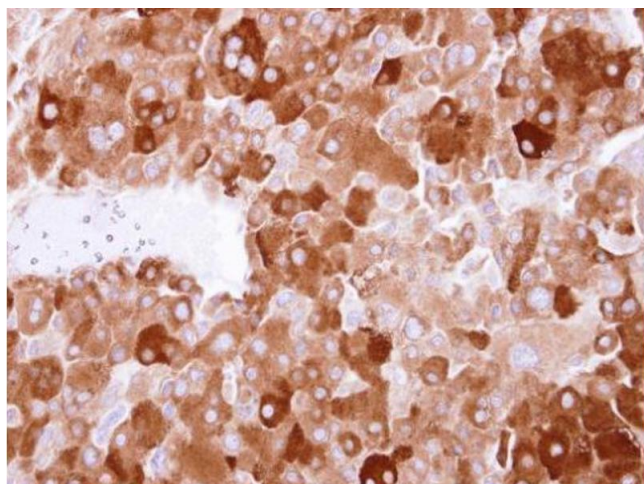
## Handling

Format:	Liquid
Concentration:	1.07 mg/mL
Buffer:	1XPBS pH 7, 20 % Glycerol, 0.025 % ProClin 300
Preservative:	ProClin
Precaution of Use:	This product contains ProClin: a POISONOUS AND HAZARDOUS SUBSTANCE which should be handled by trained staff only.
Storage:	4 °C,-20 °C

## Handling

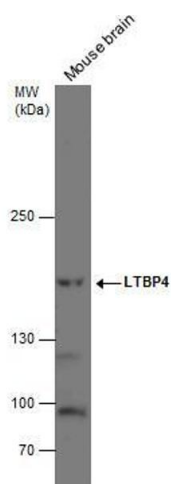
**Storage Comment:** Store as concentrated solution. Centrifuge briefly prior to opening vial. For short-term storage (1-2 weeks), store at 4°C. For long-term storage, aliquot and store at -20°C or below. Avoid multiple freeze-thaw cycles.

## Images



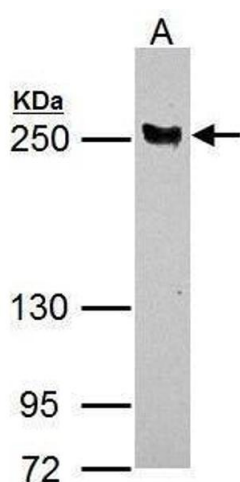
### Immunohistochemistry

**Image 1.** IHC-P Image LTBP4 antibody [N1N2], N-term detects LTBP4 protein at cytosol on human adrenal gland tumor by immunohistochemical analysis. Sample: Paraffin-embedded adrenal gland tumor. LTBP4 antibody [N1N2], N-term, dilution: 1:250.



### Western Blotting

**Image 2.** WB Image LTBP4 antibody detects LTBP4 protein by western blot analysis. Mouse tissue extracts (50 µg) was separated by 5% SDS-PAGE, and the membrane was blotted with LTBP4 antibody, diluted at 1:500.



### Western Blotting

**Image 3.** WB Image LTBP4 antibody [N1N2], N-term detects LTBP4 protein by Western blot analysis. A. 30 µg K562 whole cell lysate/extract 5 % SDS-PAGE LTBP4 antibody [N1N2], N-term, dilution: 1:1000

Please check the [product details page](#) for more images. Overall 4 images are available for ABIN2855142.