

Datasheet for ABIN2855150
anti-ATP5A1 antibody (C-Term)

4 Images

[Go to Product page](#)

Overview

Quantity:	100 µL
Target:	ATP5A1
Binding Specificity:	C-Term
Reactivity:	Human, Mouse
Host:	Rabbit
Clonality:	Polyclonal
Conjugate:	This ATP5A1 antibody is un-conjugated
Application:	Western Blotting (WB), Immunohistochemistry (Paraffin-embedded Sections) (IHC (p))

Product Details

Immunogen:	Recombinant protein encompassing a sequence within the C-terminus region of human ATP5A1. The exact sequence is proprietary.
Isotype:	IgG
Cross-Reactivity:	Chimpanzee
Cross-Reactivity (Details):	Chimpanzee (100 %)
Characteristics:	Rabbit Polyclonal antibody to ATP5A1 (ATP synthase, H ⁺ transporting, mitochondrial F1 complex, alpha subunit 1, cardiac muscle) ATP5A1 antibody [C2C3], C-term
Purification:	Purified by antigen-affinity chromatography.

Target Details

Target:	ATP5A1
Alternative Name:	ATP5A1 (ATP5A1 Products)
Background:	<p>This gene encodes a subunit of mitochondrial ATP synthase. Mitochondrial ATP synthase catalyzes ATP synthesis, using an electrochemical gradient of protons across the inner membrane during oxidative phosphorylation. ATP synthase is composed of two linked multi-subunit complexes: the soluble catalytic core, F1, and the membrane-spanning component, Fo, comprising the proton channel. The catalytic portion of mitochondrial ATP synthase consists of 5 different subunits (alpha, beta, gamma, delta, and epsilon) assembled with a stoichiometry of 3 alpha, 3 beta, and a single representative of the other 3. The proton channel consists of three main subunits (a, b, c). This gene encodes the alpha subunit of the catalytic core. Alternatively spliced transcript variants encoding the same protein have been identified. Pseudogenes of this gene are located on chromosomes 9, 2, and 16.</p> <p>Cellular Localization: Mitochondrion inner membrane</p>
Molecular Weight:	60 kDa
Gene ID:	498
Pathways:	Proton Transport , Ribonucleoside Biosynthetic Process

Application Details

Application Notes:	Suggested dilution Reference IHC (Formalin-fixed paraffin-embedded sections) 1:100-1:1000* Western blot 1:500-1:3000* Not tested in other applications. *Optimal dilutions/concentrations should be determined by the researcher.Suggested dilutionReferenceIHC (Formalin-fixed paraffin-embedded sections)1:100-1:1000* Western blot1:500-1:3000*
Comment:	Positive Control: K562 , THP-1
Restrictions:	For Research Use only

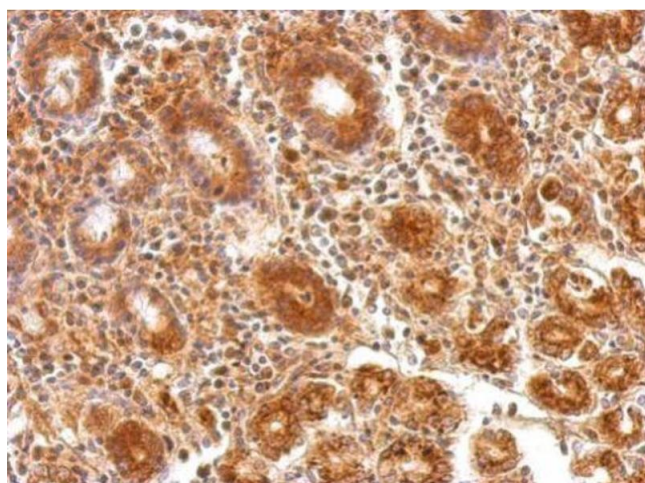
Handling

Format:	Liquid
Concentration:	0.66 mg/mL
Buffer:	1XPBS, 20 % Glycerol (pH 7). 0.025 % ProClin 300 was added as a preservative.
Preservative:	ProClin

Handling

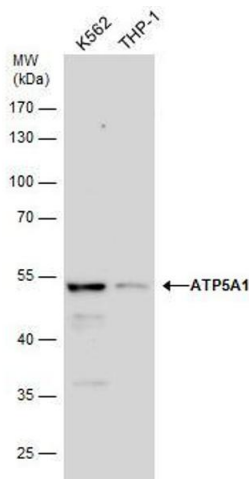
Precaution of Use:	This product contains ProClin: a POISONOUS AND HAZARDOUS SUBSTANCE which should be handled by trained staff only.
Storage:	-20 °C
Storage Comment:	Keep as concentrated solution. Aliquot and store at -20°C or below. Avoid multiple freeze-thaw cycles.

Images



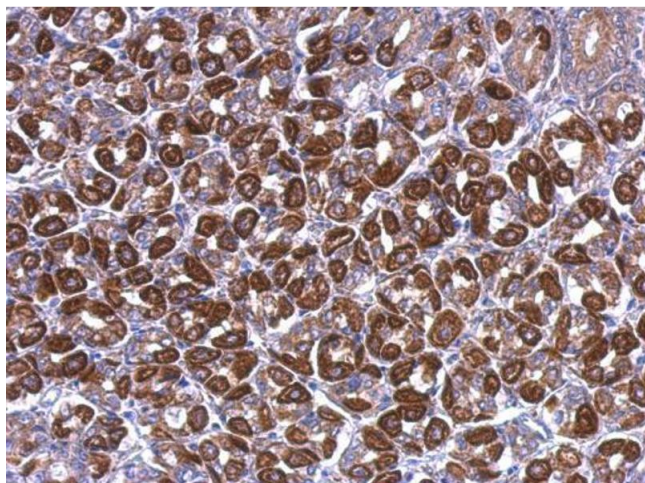
Immunohistochemistry

Image 1. IHC-P Image ATP5A1 antibody [C2C3], C-term detects ATP5A1 protein at cytosol on human colon carcinoma by immunohistochemical analysis. Sample: Paraffin-embedded colon carcinoma. ATP5A1 antibody [C2C3], C-term, dilution: 1:200.



Western Blotting

Image 2. WB Image ATP5A1 antibody detects ATP5A1 protein by western blot analysis. Various whole cell extracts (30 µg) were separated by 10% SDS-PAGE, and the membrane was blotted with ATP5A1 antibody, diluted by 1:2000.



Immunohistochemistry

Image 3. IHC-P Image ATP5A1 antibody [C2C3], C-term detects ATP5A1 protein at cytoplasm on mouse stomach by immunohistochemical analysis. Sample: Paraffin-embedded mouse stomach. ATP5A1 antibody [C2C3], C-term, dilution: 1:500.

Please check the [product details page](#) for more images. Overall 4 images are available for ABIN2855150.