

Datasheet for ABIN2855152

anti-LDHB antibody

6 Images

[Go to Product page](#)

Overview

Quantity:	100 µL
Target:	LDHB
Reactivity:	Human
Host:	Rabbit
Clonality:	Polyclonal
Conjugate:	This LDHB antibody is un-conjugated
Application:	Western Blotting (WB), Immunocytochemistry (ICC), Immunofluorescence (IF), Immunohistochemistry (Paraffin-embedded Sections) (IHC (p))

Product Details

Immunogen:	Recombinant protein encompassing a sequence within the center region of human LDH-B. The exact sequence is proprietary.
Isotype:	IgG
Cross-Reactivity:	Human, Mouse, Rat
Characteristics:	Rabbit Polyclonal antibody to LDH-B (lactate dehydrogenase B) LDH-B antibody
Purification:	Purified by antigen-affinity chromatography.
Grade:	KO Validated

Target Details

Target:	LDHB
---------	------

Target Details

Alternative Name:	lactate dehydrogenase B (LDHB Products)
Background:	<p>This gene encodes an enzyme which catalyzes the reversible conversion of lactate and pyruvate, and NAD and NADH, in the glycolytic pathway. Mutations in this gene are associated with lactate dehydrogenase B deficiency. Pseudogenes have been identified on the X chromosome and on chromosome. Multiple alternatively spliced variants, encoding the same protein, have been identified.</p> <p>Cellular Localization: Cytoplasm</p>
Molecular Weight:	37 kDa
Gene ID:	3945
UniProt:	P07195
Pathways:	Warburg Effect

Application Details

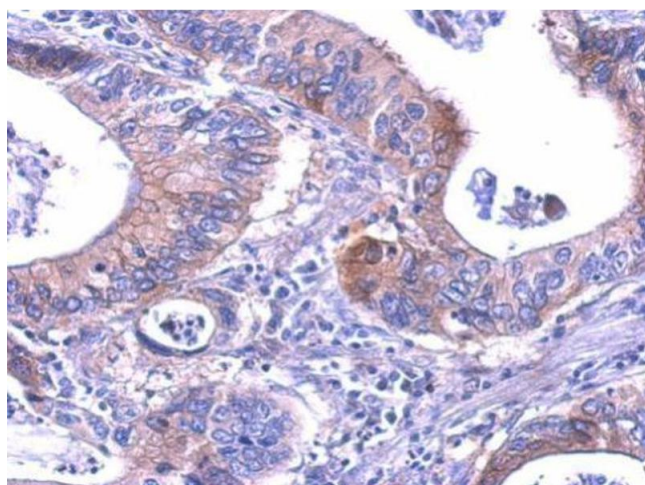
Application Notes:	WB: 1:500-1:3000. ICC/IF: 1:100-1:1000. IHC-P: 1:100-1:1000. Optimal dilutions/concentrations should be determined by the researcher. Not tested in other applications.
Comment:	<p>Positive Control: mouse brain , rat brain</p> <p>Validation: KO/KD, Orthogonal</p>
Restrictions:	For Research Use only

Handling

Format:	Liquid
Concentration:	0.32 mg/mL
Buffer:	1XPBS (pH 7), 1 % BSA, 20 % Glycerol, 0.025 % ProClin 300
Preservative:	ProClin
Precaution of Use:	This product contains ProClin: a POISONOUS AND HAZARDOUS SUBSTANCE which should be handled by trained staff only.
Storage:	4 °C,-20 °C
Storage Comment:	Store as concentrated solution. Centrifuge briefly prior to opening vial. For short-term storage (1-2 weeks), store at 4°C. For long-term storage, aliquot and store at -20°C or below. Avoid

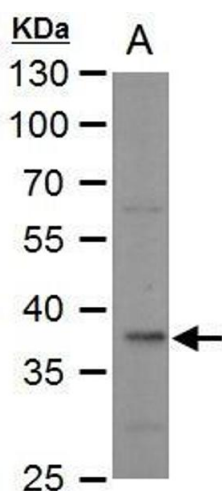
multiple freeze-thaw cycles.

Images



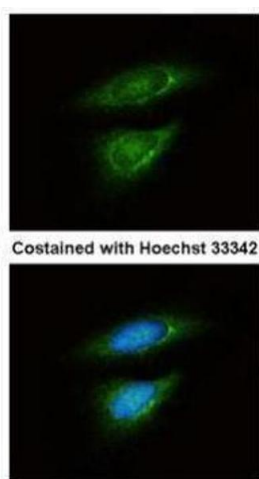
Immunohistochemistry

Image 1. IHC-P Image LDH-B antibody detects LDHB protein at cytosol on human gastric cancer by immunohistochemical analysis. Sample: Paraffin-embedded gastric cancer. LDH-B antibody , dilution: 1:200.



Western Blotting

Image 2. WB Image LDH-B antibody detects LDH-B protein by western blot analysis. A. 50 µg mouse brain extract 10 % SDS-PAGE LDH-B antibody , dilution: 1:500



Immunofluorescence

Image 3. ICC/IF Image Immunofluorescence analysis of methanol-fixed HeLa, using LDH-B, antibody at 1:50 dilution.

Please check the [product details page](#) for more images. Overall 6 images are available for ABIN2855152.