



[Go to Product page](#)

Datasheet for ABIN2855154
anti-AP2B1 antibody (Internal Region)

2 Images

Overview

Quantity:	100 µL
Target:	AP2B1
Binding Specificity:	Internal Region
Reactivity:	Human, Mouse
Host:	Rabbit
Clonality:	Polyclonal
Conjugate:	This AP2B1 antibody is un-conjugated
Application:	Western Blotting (WB)

Product Details

Immunogen:	Recombinant protein encompassing a sequence within the center region of human beta-Adaptin. The exact sequence is proprietary.
Isotype:	IgG
Cross-Reactivity:	Cow (Bovine)
Cross-Reactivity (Details):	Bovine (100 %)
Characteristics:	Rabbit polyclonal antibody to beta-Adaptin (adaptor-related protein complex 1, beta 1 subunit) beta-Adaptin antibody [N3C1], Internal
Purification:	Purified by antigen-affinity chromatography.

Target Details

Target:	AP2B1
Alternative Name:	beta-Adaptin (AP2B1 Products)
Background:	<p>Adaptor protein complex 1 is found at the cytoplasmic face of coated vesicles located at the Golgi complex, where it mediates both the recruitment of clathrin to the membrane and the recognition of sorting signals within the cytosolic tails of transmembrane receptors. This complex is a heterotetramer composed of two large, one medium, and one small adaptin subunit. The protein encoded by this gene serves as one of the large subunits of this complex and is a member of the adaptin protein family. This gene is a candidate meningioma gene. Two transcript variants encoding different isoforms have been found for this gene, and variants utilizing alternative polyadenylation signals exist.</p> <p>Cellular Localization: Golgi apparatus , Cytoplasmic vesicle , clathrin-coated vesicle membrane</p>
Molecular Weight:	105 kDa
Gene ID:	162
Pathways:	EGFR Signaling Pathway , Neurotrophin Signaling Pathway , EGFR Downregulation

Application Details

Application Notes:	<p>Suggested dilution Reference Western blot 1:500-1:3000* Not tested in other applications.</p> <p>*Optimal dilutions/concentrations should be determined by the researcher.Suggested dilutionReferenceWestern blot1:500-1:3000*</p>
Comment:	Positive Control: 293T , A431 , H1299 , HeLaS3 , HepG2 , Molt-4 , Raji , NIH-3T3
Restrictions:	For Research Use only

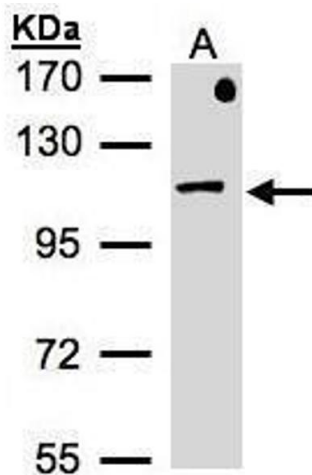
Handling

Format:	Liquid
Concentration:	0.55 mg/mL
Buffer:	0.1M Tris, 0.1M Glycine, 10 % Glycerol (pH 7). 0.01 % Thimerosal was added as a preservative.
Preservative:	Thimerosal (Merthiolate)
Precaution of Use:	This product contains Thimerosal (Merthiolate): a POISONOUS AND HAZARDOUS SUBSTANCE which should be handled by trained staff only.
Storage:	-20 °C

Handling

Storage Comment: Keep as concentrated solution. Aliquot and store at -20°C or below. Avoid multiple freeze-thaw cycles.

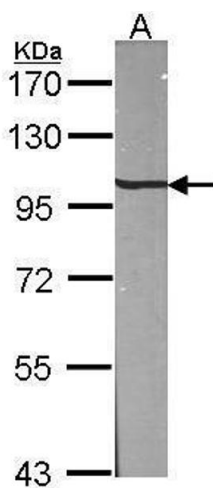
Images



Western Blotting

Image 1. WB Image Sample(30 μg of whole cell lysate)

A:MOLT4, 7.5% SDS PAGE antibody diluted at 1:500



Western Blotting

Image 2. WB Image Sample (30 μg of whole cell lysate)

A:NIH-3T3 7.5% SDS PAGE antibody diluted at 1:1000