

Datasheet for ABIN2855157  
**anti-CKB antibody**



[Go to Product page](#)

4 Images

## Overview

Quantity:	100 µL
Target:	CKB
Reactivity:	Human
Host:	Rabbit
Clonality:	Polyclonal
Conjugate:	This CKB antibody is un-conjugated
Application:	Western Blotting (WB), Immunocytochemistry (ICC), Immunofluorescence (IF), Immunohistochemistry (Paraffin-embedded Sections) (IHC (p))

## Product Details

Immunogen:	Recombinant protein encompassing a sequence within the center region of human Creatine kinase (brain). The exact sequence is proprietary.
Isotype:	IgG
Cross-Reactivity:	Human, Mouse, Rat, Zebrafish (Danio rerio)
Characteristics:	Rabbit Polyclonal antibody to Creatine kinase (brain) (creatine kinase, brain) Creatine kinase (brain) antibody [N1C1]
Purification:	Affinity purified by Protein A.

## Target Details

Target:	CKB
Alternative Name:	creatine kinase B ( <a href="#">CKB Products</a> )

## Target Details

**Background:** The protein encoded by this gene is a cytoplasmic enzyme involved in energy homeostasis. The encoded protein reversibly catalyzes the transfer of phosphate between ATP and various phosphogens such as creatine phosphate. It acts as a homodimer in brain as well as in other tissues, and as a heterodimer with a similar muscle isozyme in heart. The encoded protein is a member of the ATP:guanido phosphotransferase protein family. A pseudogene of this gene has been characterized.

Cellular Localization: Cytoplasm

**Molecular Weight:** 43 kDa

**Gene ID:** 1152

**UniProt:** [P12277](#)

## Application Details

**Application Notes:** WB: 1:500-1:3000. ICC/IF: 1:100-1:1000. IHC-P: 1:100-1:1000. Optimal dilutions/concentrations should be determined by the researcher. Not tested in other applications.

**Restrictions:** For Research Use only

## Handling

**Format:** Liquid

**Concentration:** 2.05 mg/mL

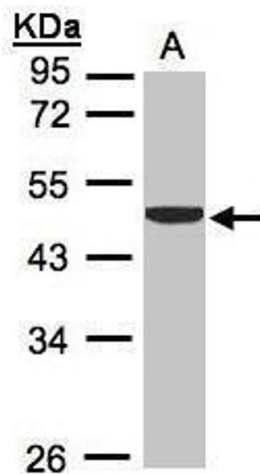
**Buffer:** 1XPBS pH 7, 20 % Glycerol, 0.025 % ProClin 300

**Preservative:** ProClin

**Precaution of Use:** This product contains ProClin: a POISONOUS AND HAZARDOUS SUBSTANCE which should be handled by trained staff only.

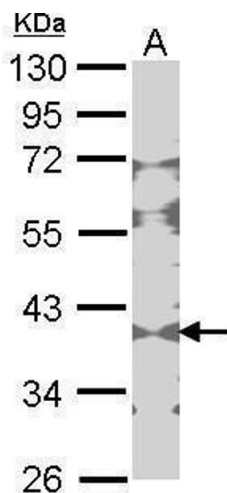
**Storage:** 4 °C, -20 °C

**Storage Comment:** Store as concentrated solution. Centrifuge briefly prior to opening vial. For short-term storage (1-2 weeks), store at 4°C. For long-term storage, aliquot and store at -20°C or below. Avoid multiple freeze-thaw cycles.



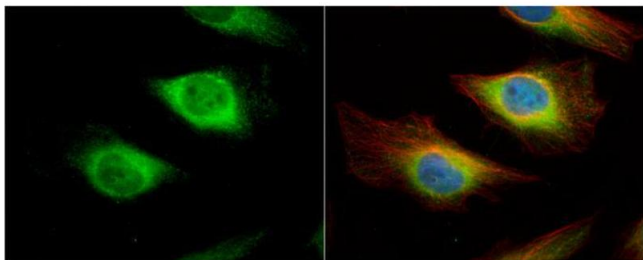
#### Western Blotting

**Image 1.** WB Image Sample (30µg whole cell lysate)  
A:H1299 10% SDS PAGE antibody diluted at 1:1000



#### Western Blotting

**Image 2.** WB Image Sample (30 ug of whole cell lysate) A:  
NIH-3T3 10% SDS PAGE Creatine Kinase BB antibody  
antibody diluted at 1:1000



#### Immunofluorescence

**Image 3.** ICC/IF Image Creatine kinase (brain) antibody [N1C1] detects Creatine kinase (brain) protein at cytoplasm and nucleus by immunofluorescent analysis. Sample: HeLa cells were fixed in 4% paraformaldehyde at RT for 15 min. Green: Creatine kinase (brain) protein stained by Creatine kinase (brain) antibody [N1C1] , diluted at 1:500. Red: alpha Tubulin, a cytoskeleton marker, stained by alpha Tubulin antibody [B-5-1-2] , diluted at 1:10000. Blue: Hoechst 33342 staining.

Please check the [product details page](#) for more images. Overall 4 images are available for ABIN2855157.