



[Go to Product page](#)

Datasheet for ABIN2855158

anti-CKB antibody

6 Images

Overview

| | |
|--------------|--|
| Quantity: | 100 µL |
| Target: | CKB |
| Reactivity: | Human |
| Host: | Rabbit |
| Clonality: | Polyclonal |
| Conjugate: | This CKB antibody is un-conjugated |
| Application: | Western Blotting (WB), Immunofluorescence (IF), Immunocytochemistry (ICC), Immunohistochemistry (Paraffin-embedded Sections) (IHC (p)) |

Product Details

| | |
|-------------------|---|
| Immunogen: | Recombinant protein encompassing a sequence within the center region of human Creatine kinase (brain). The exact sequence is proprietary. |
| Isotype: | IgG |
| Cross-Reactivity: | Human, Mouse, Rat, Zebrafish (Danio rerio) |
| Characteristics: | Rabbit Polyclonal antibody to Creatine kinase (brain) (creatine kinase, brain) Creatine kinase (brain) antibody [N3C3] |
| Purification: | Purified by antigen-affinity chromatography. |

Target Details

| | |
|-------------------|--|
| Target: | CKB |
| Alternative Name: | creatine kinase B (CKB Products) |

Target Details

Background: The protein encoded by this gene is a cytoplasmic enzyme involved in energy homeostasis. The encoded protein reversibly catalyzes the transfer of phosphate between ATP and various phosphogens such as creatine phosphate. It acts as a homodimer in brain as well as in other tissues, and as a heterodimer with a similar muscle isozyme in heart. The encoded protein is a member of the ATP:guanido phosphotransferase protein family. A pseudogene of this gene has been characterized.

Cellular Localization: Cytoplasm

Molecular Weight: 43 kDa

Gene ID: 1152

UniProt: [P12277](#)

Application Details

Application Notes: WB: 1:500-1:10000. ICC/IF: 1:100-1:1000. IHC-P: 1:100-1:1000. Optimal dilutions/concentrations should be determined by the researcher. Not tested in other applications.

Comment: Positive Control: Mouse brain , H1299 , HeLaS3 , rat brain

Restrictions: For Research Use only

Handling

Format: Liquid

Concentration: 0.54 mg/mL

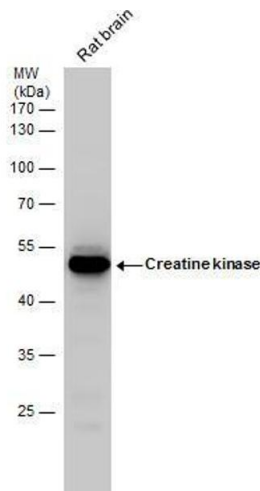
Buffer: 0.1M Tris-Glycine (pH 7), 10 % Glycerol, 0.01 % Thimerosal

Preservative: Thimerosal (Merthiolate)

Precaution of Use: This product contains Thimerosal (Merthiolate): a POISONOUS AND HAZARDOUS SUBSTANCE which should be handled by trained staff only.

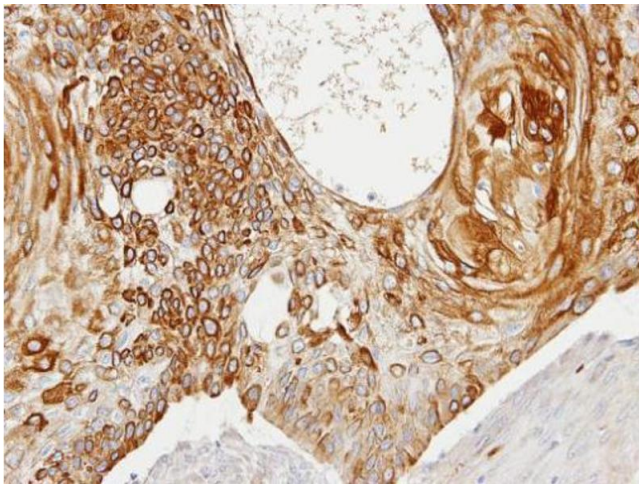
Storage: 4 °C,-20 °C

Storage Comment: Store as concentrated solution. Centrifuge briefly prior to opening vial. For short-term storage (1-2 weeks), store at 4°C. For long-term storage, aliquot and store at -20°C or below. Avoid multiple freeze-thaw cycles.



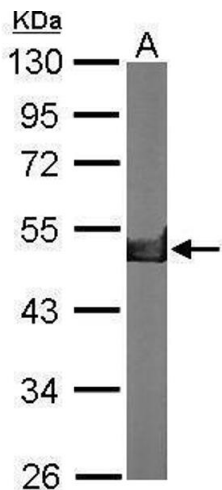
Western Blotting

Image 1. WB Image Creatine kinase (brain) antibody detects Creatine kinase protein by western blot analysis. Rat tissue extracts (50 µg) was separated by 10 % SDS-PAGE, and blotted with Creatine kinase (brain) antibody , diluted by 1:1000



Immunohistochemistry

Image 2. IHC-P Image Immunohistochemical analysis of paraffin-embedded HSC3 xenograft, using Creatine kinase (brain), antibody at 1:100 dilution.



Western Blotting

Image 3. WB Image Sample (50 ug of whole cell lysate) A: Mouse brain 10% SDS PAGE antibody diluted at 1:10000

Please check the [product details page](#) for more images. Overall 6 images are available for ABIN2855158.