

Datasheet for ABIN2855159  
**anti-SLC25A11 antibody**

## 2 Images

[Go to Product page](#)

## Overview

Quantity:	100 µL
Target:	SLC25A11
Reactivity:	Human
Host:	Rabbit
Clonality:	Polyclonal
Conjugate:	This SLC25A11 antibody is un-conjugated
Application:	Western Blotting (WB), Immunohistochemistry (Paraffin-embedded Sections) (IHC (p))

## Product Details

Immunogen:	Recombinant protein encompassing a sequence within the center region of human SLC25A11. The exact sequence is proprietary.
Isotype:	IgG
Cross-Reactivity:	Human, Rat
Characteristics:	Rabbit Polyclonal antibody to SLC25A11 (mitochondrial 2-oxoglutarate/malate carrier protein) SLC25A11 antibody
Purification:	Purified by antigen-affinity chromatography.

## Target Details

Target:	SLC25A11
Alternative Name:	solute carrier family 25 member 11 ( <a href="#">SLC25A11 Products</a> )

## Target Details

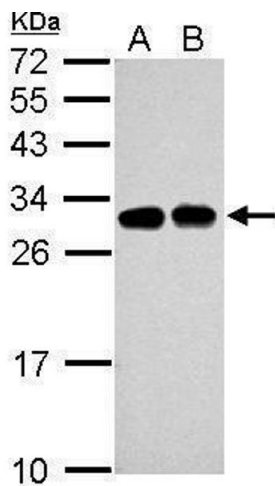
Background:	The oxoglutarate/malate carrier transports 2-oxoglutarate across the inner membranes of mitochondria in an electroneutral exchange for malate or other dicarboxylic acids (summary by Iacobazzi et al., 1992 [PubMed 1457818]).[supplied by OMIM]  Cellular Localization: Mitochondrion inner membrane, Multi-pass membrane protein
Molecular Weight:	34 kDa
Gene ID:	8402
UniProt:	<a href="#">Q02978</a>
Pathways:	<a href="#">Dicarboxylic Acid Transport</a>

## Application Details

Application Notes:	WB: 1:500-1:10000. IHC-P: 1:100-1:1000. Optimal dilutions/concentrations should be determined by the researcher. Not tested in other applications.
Comment:	Positive Control: Jurkat , Raji , rat kidney
Restrictions:	For Research Use only

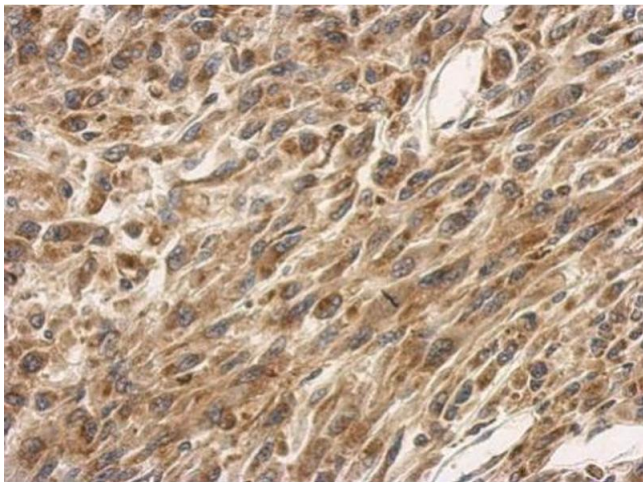
## Handling

Format:	Liquid
Concentration:	1 mg/mL
Buffer:	1XPBS ( pH 7), 20 % Glycerol, 0.01 % Thimerosal
Preservative:	Thimerosal (Merthiolate)
Precaution of Use:	This product contains Thimerosal (Merthiolate): a POISONOUS AND HAZARDOUS SUBSTANCE which should be handled by trained staff only.
Storage:	4 °C,-20 °C
Storage Comment:	Store as concentrated solution. Centrifuge briefly prior to opening vial. For short-term storage (1-2 weeks), store at 4°C. For long-term storage, aliquot and store at -20°C or below. Avoid multiple freeze-thaw cycles.



#### Western Blotting

**Image 1.** WB Image Sample (30 ug of whole cell lysate) A: Jurkat B: Raji 12% SDS PAGE antibody diluted at 1:5000



#### Immunohistochemistry

**Image 2.** IHC-P Image Immunohistochemical analysis of paraffin-embedded U87 xenograft, using SLC25A11, antibody at 1:500 dilution.