

Datasheet for ABIN2855160

anti-TUFM antibody

7 Images

[Go to Product page](#)

Overview

Quantity:	100 µL
Target:	TUFM (Tufm)
Reactivity:	Human
Host:	Rabbit
Clonality:	Polyclonal
Conjugate:	This TUFM antibody is un-conjugated
Application:	Western Blotting (WB), Immunofluorescence (IF), Immunoprecipitation (IP), Immunohistochemistry (Paraffin-embedded Sections) (IHC (p)), Immunocytochemistry (ICC)

Product Details

Immunogen:	Recombinant protein encompassing a sequence within the center region of human TUFM. The exact sequence is proprietary.
Isotype:	IgG
Specificity:	Knockdown/Knockout validation was supported by references (PMID:26990993)
Cross-Reactivity:	Human, Mouse
Characteristics:	Rabbit Polyclonal antibody to TUFM (Tu translation elongation factor, mitochondrial) TUFM antibody
Purification:	Purified by antigen-affinity chromatography.
Grade:	KO Validated

Target Details

Target:	TUFM (Tufm)
Alternative Name:	Tu translation elongation factor, mitochondrial (Tufm Products)
Background:	<p>This gene encodes a protein which participates in protein translation in mitochondria. Mutations in this gene have been associated with combined oxidative phosphorylation deficiency resulting in lactic acidosis and fatal encephalopathy. A pseudogene has been identified on chromosome 17.</p> <p>Cellular Localization: Mitochondrion</p>
Molecular Weight:	50 kDa
Gene ID:	7284
UniProt:	P49411

Application Details

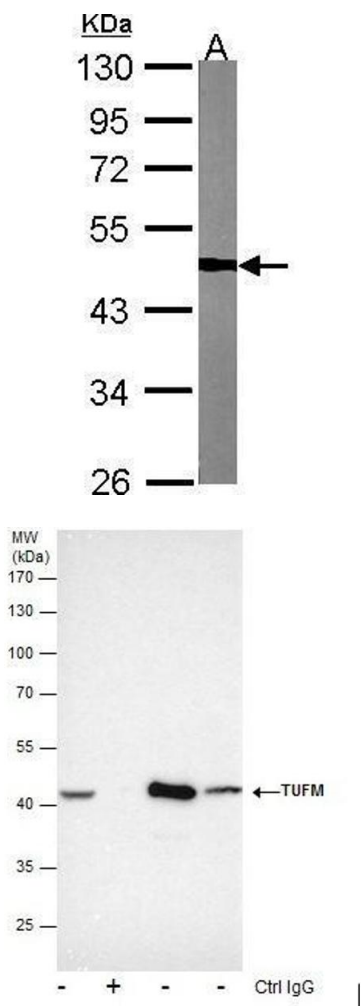
Application Notes:	WB: 1:500-1:3000. ICC/IF: 1:100-1:1000. IHC-P: 1:100-1:1000. IP: 1:100-1:500. Optimal dilutions/concentrations should be determined by the researcher. Not tested in other applications.
Comment:	<p>Positive Control: NIH-3T3</p> <p>Validation: KO/KD</p>
Restrictions:	For Research Use only

Handling

Format:	Liquid
Concentration:	0.3 mg/mL
Buffer:	1XPBS pH 7, 1 % BSA, 20 % Glycerol, 0.025 % ProClin 300
Preservative:	ProClin
Precaution of Use:	This product contains ProClin: a POISONOUS AND HAZARDOUS SUBSTANCE which should be handled by trained staff only.
Storage:	4 °C, -20 °C
Storage Comment:	Store as concentrated solution. Centrifuge briefly prior to opening vial. For short-term storage (1-2 weeks), store at 4°C. For long-term storage, aliquot and store at -20°C or below. Avoid

multiple freeze-thaw cycles.

Images

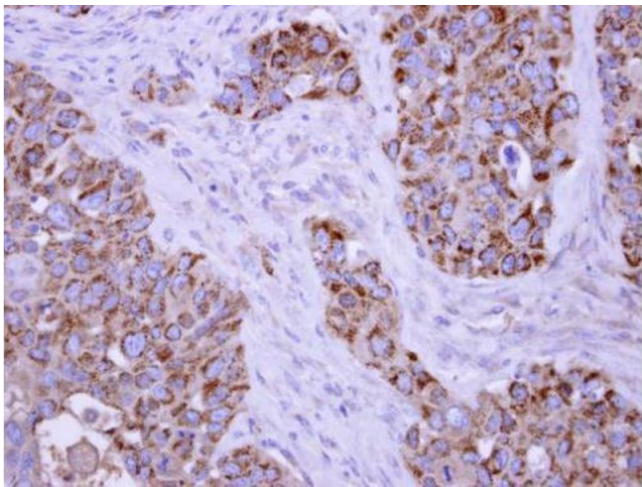


Western Blotting

Image 1. WB Image Sample (30 ug of whole cell lysate)
A:NIH-3T3 10% SDS PAGE antibody diluted at 1:1000

Immunoprecipitation

Image 2. IP Image Immunoprecipitation of TUFM protein from HepG2 whole cell extracts using 5 µg of TUFM antibody , or TUFM antibody, Western blot analysis was performed using TUFM antibody, EasyBlot anti-Rabbit IgG was used as a secondary reagent.



Immunohistochemistry

Image 3. IHC-P Image TUFM antibody detects TUFM protein at mitochondria on H441 xenograft by immunohistochemical analysis. Sample: Paraffin-embedded H441 xenograft. TUFM antibody , dilution: 1:250.

Please check the [product details page](#) for more images. Overall 7 images are available for ABIN2855160.